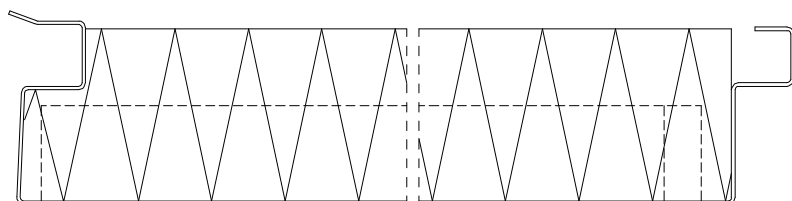
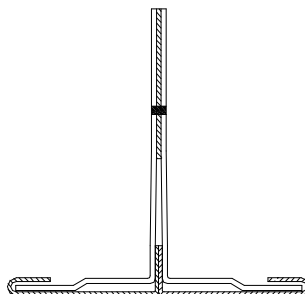
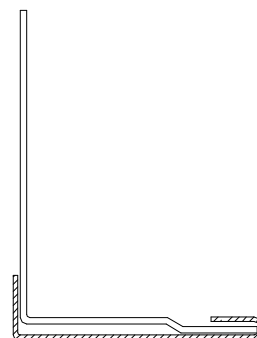


# LUBMOR

Ltd.

64-980 Trzcianka  
Wieleńska 1 Str.  
phone +48 (067) 216-22-44  
fax +48 (067) 216-59-40  
e-mail: [lubmor@lubmor.pl](mailto:lubmor@lubmor.pl)  
[www.lubmor.pl](http://www.lubmor.pl)



Edition December 2010

PREFABRICATES AND  
ELEMENTS OF CEILING BOARDS  
OF SHUTTERING SYSTEM  
TYPE LUBMOR

# INTRODUCTION

This description is issued for showing a full assortment of sheathing prefabricates together with additional elements which are in LUBMOR's production range and designer for building of accommodations on the ships.

Technical development and received experiences have allowed prepare and make a new system of ceiling panels which have got the features as follows:

- whole prefabricated plate elements, finishing and supplementary profiles
- is easy for installation
- the accommodations have a high quality
- ceiling panels can be dismantled in each chosen place (it regards riveted version).

Using a ceiling elements from his description for construction of accommodations allows for construction of accommodations allows receiving a good soundproofness and required regulations regarding fire proofness class B15, B0 and C.

This description includes a set of technical and material information and also all data which are helpful for identification of the goods within making a project documentation of ship.

All connecting elements showed in construction details of this catalogue such as rivets and screws are delivered by the orderer.

Using hereby system allows to use ceiling panels of max length  $L=2960$ . However acc. to our experiences there is recommended to use for better effect and operating of the ceiling the panels of max length  $L=2500$ .

The ceiling panels used in his system allows their dismantling in each place keeping a space min. 50 mm above ceiling panels and ship installation.

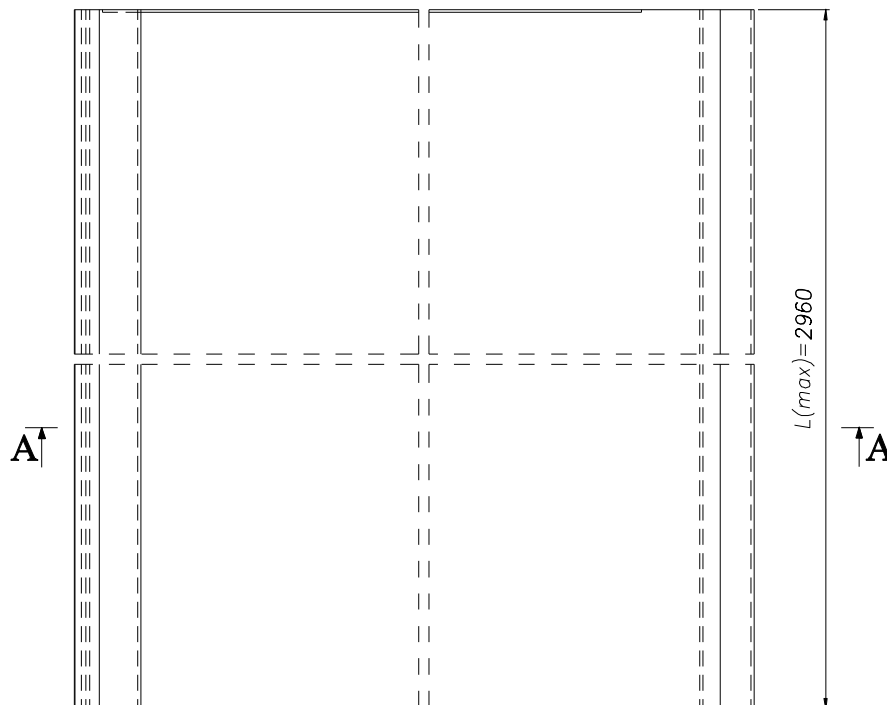
In case missing of this space a ceiling can be dismantled to bottom (details of his dismantling are described in installation instruction).

The ceiling panels placed directly above furniture which are installed to this ceiling high can also be dismantled (detail is stated in installation instruction).

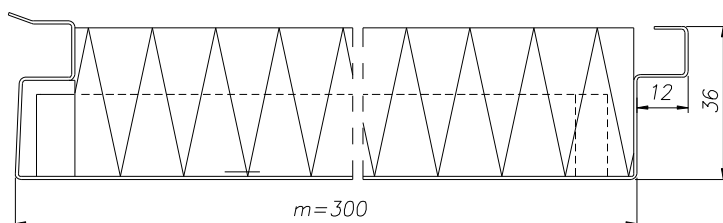
This description for better presenting of our system includes on the end pages a main construction details fixing of ceiling prefabricates.

# LIST OF CATALOGUE CARDS

1.	Ceiling panel C	KK24-04/31-C1/01
2.	Ceiling panel B0	KK24-04/31-C2/01
3.	Ceiling panel B15	KK24-09/31-C5/01
4.	Ceiling panel B0	KK24-09/31-C6/01
5.	Initially ceiling panel B0	KK24-09/31-C6/02
6.	Final ceiling panel B0	KK24-09/31-C6/03
7.	Ceiling profile	KK24-06/31-CP/01
8.	Ceiling profile II	KK24-06/31-CP/02
9.	Supporting profile	KK24-06/31-CP/03
10.	Supporting profile II	KK24-06/31-CP/04
11.	Connector of supporting profile	KK24-06/31-CP/05
12.	Fixing profile	KK24-06/31-CP/06
13.	Hanger	KK24-10/31-CP/07
14.	Elastic hanger	KK24-10/31-CP/08
15.	Set profile	KK24-06/31-CP/09
16.	Girder	KK24-06/31-CP/10
17.	Girder II	KK24-06/31-CP/12
18.	Supporting ceiling profile	KK24-10/31-CP/13
19.	Connecting ceiling profile	KK24-10/31-CP/14
20.	Ouside corner	KK24-06/31-CP/18
21.	Ceiling door	KK24-06/31-CP/20



**A-A**



- Dimension:** mxL - module of panels x length is stated by orderer (Lmax=2960 mm)
- Material and finishing:**
- galv. steel sheet of core thick. 0,7 mm covered with PVC foil or painted, protected of protection foil
  - Mineral wool of density 40 kg/m<sup>3</sup>, thick. 35 mm,
  - glue.
- Example of marking:** Ceiling panel C of module m=300 mm and length L=2400 mm, covered of PCV foil in colour Dobel 1306  
**CEILING PANEL C 300x2400/D.1306** **KK24-04/31-C1/01**

- Remarks:**
1. It is permitted to order the panels with other module „m” (i.e. m=200).
  2. It is also permitted to use stainless steel sheet of core thick. 0,6 mm

Mass: 2,23 kg/r.m.

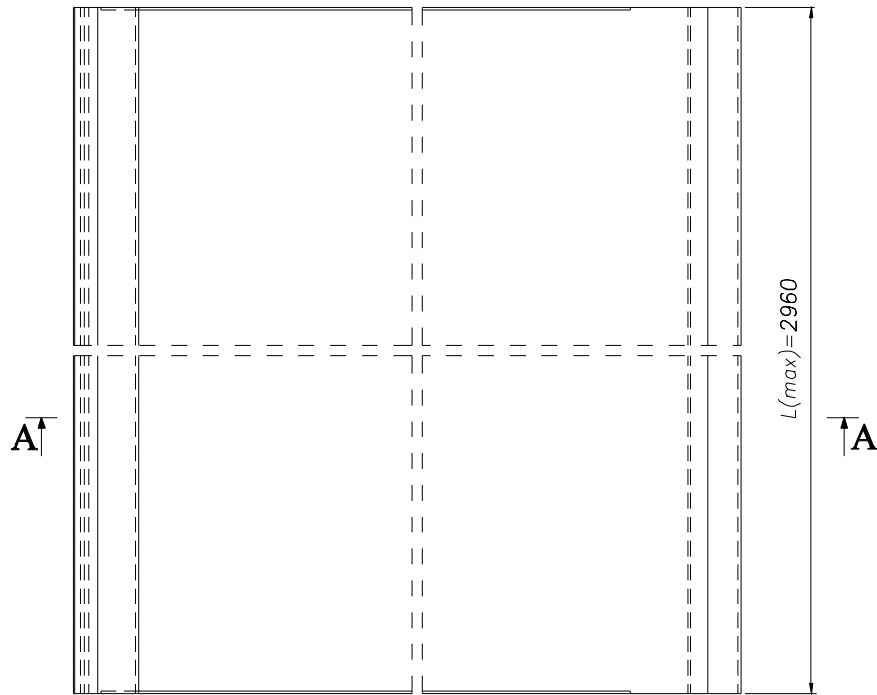


**LUBMOR Ltd.**

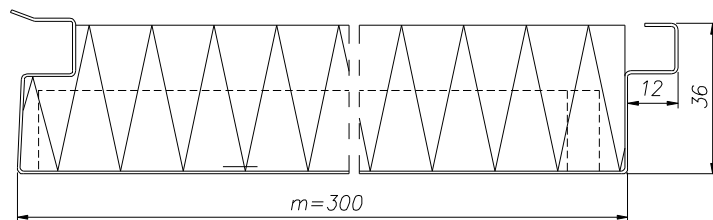
Wieleńska 1 Str, 64-980 Trzcianka  
 phone (067) 216-22-44  
 fax (067) 216-59-40  
 e-mail: [lubmor@lubmor.pl](mailto:lubmor@lubmor.pl)  
[www.lubmor.pl](http://www.lubmor.pl)

**CEILING PANEL C**

**KK24-04**  
**31-C1/01**



**A-A**



- Dimension:** mxL - module of panels x length is stated by orderer (Lmax=2960 mm)
- Material and finishing:**
- galv. steel sheet of core thick. 0,7 mm covered with PVC foil or painted, protected of protection foil
  - Mineral wool of density 40 kg/m<sup>3</sup>, trick. 35 mm,
  - glue.
- Example of marking:** Ceiling panel B0 of module m=300 mm and length L=2400 mm, covered of PCV foil in colour Dobel 1306
- CEILING PANEL B0 300x2400/D.1306                      KK24-04/31-C2/01**

- Remarks:**
1. It is permitted to order the panels with other module „m” (i.e. m=200).
  2. It is also permitted to use stainless steel sheet of core thick. 0,6 mm

Mass: 2,23 kg/r.m.

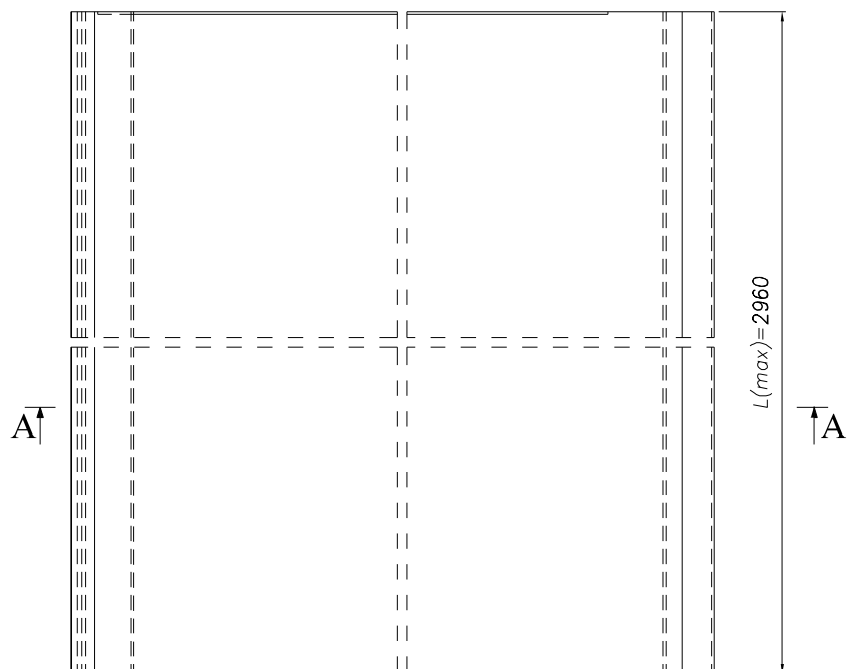


**LUBMOR Ltd.**

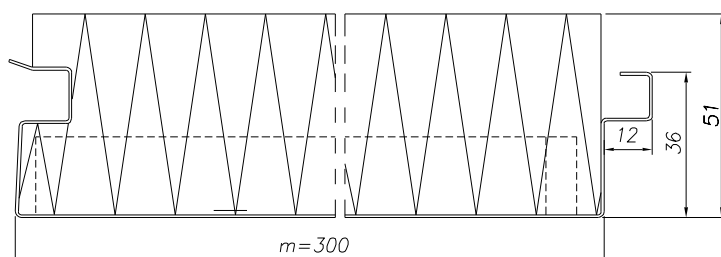
Wieleńska 1 Str, 64-980 Trzcianka  
 phone (067) 216-22-44  
 fax (067) 216-59-40  
 e-mail: [lubmor@lubmor.pl](mailto:lubmor@lubmor.pl)  
[www.lubmor.pl](http://www.lubmor.pl)

**CEILING PANEL B0**

**KK24-04**  
**31-C2/01**



A-A



- Dimension:** mxL - module of panels x length, is stated by orderer (Lmax=2960 mm)
- Material and finishing:**
- galv. steel sheet of core thick. 0,7 mm covered with PVC foil or painted, protected of protection foil
  - Mineral wool of density 40 kg/m<sup>3</sup>, trick. 35 mm,
  - glue.

**Example of marking:** Ceiling panel B15 of module m=300 mm and length L=2400 mm, covered of PCV foil in colour Dobel 1306

**CEILING PANEL B15 300x2400/D.1306**

**KK24-09/31-C5/01**

- Remarks:**
1. It is permitted to order the panels with other module „m” (i.e. m=200).
  2. It is also permitted to use stainless steel sheet of core thick. 0,6 mm.

Mass: 3,88 kg/r.m.



**LUBMOR Ltd.**

Wieleńska 1 Str, 64-980 Trzcianka

phone (067) 216-22-44

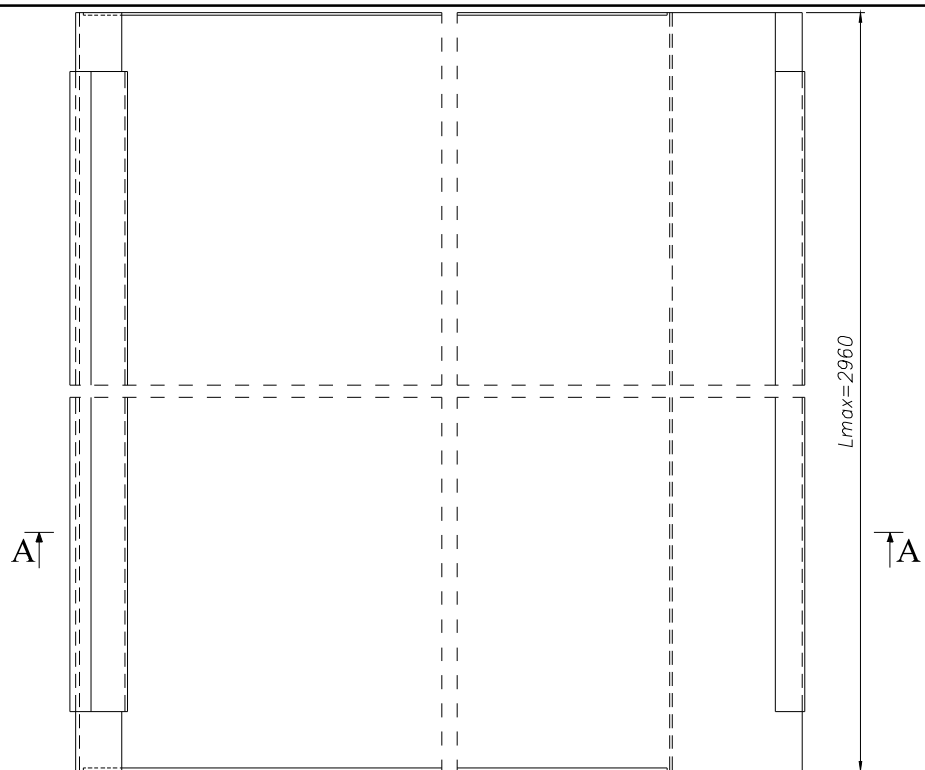
fax (067) 216-59-40

e-mail: [lubmor@lubmor.pl](mailto:lubmor@lubmor.pl)

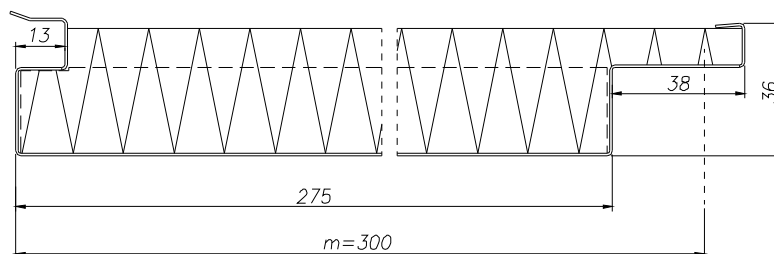
[www.lubmor.pl](http://www.lubmor.pl)

**CEILING PANEL B15**

**KK24-09  
31-C5/01**



A-A



- Dimension:** mxL - module of panels x length, is stated by orderer (Lmax=2960 mm)
- Material and finishing:**
- galv. steel sheet of core thick. 0,7 mm covered with PVC foil or painted, protected of protection foil
  - Mineral wool of density 40 kg/m<sup>3</sup>, trick. 35 mm,
  - glue.

**Example of marking:** Ceiling panel B0 of module m=300 mm and length L=2400 mm, lacquered in colour Ral 9010

**CEILING PANEL B0 300x2400/Ral 9010**

**KK24-09/31-C6/01**

- Remarks:**
1. It is permitted to order the panels with other module „m” (i.e. m=200).
  2. It is also permitted to use stainless steel sheet of core thick. 0,6 mm.

Mass: 2,45 kg/r.m.



**LUBMOR Ltd.**

Wieleńska 1 Str, 64-980 Trzcianka

phone (067) 216-22-44

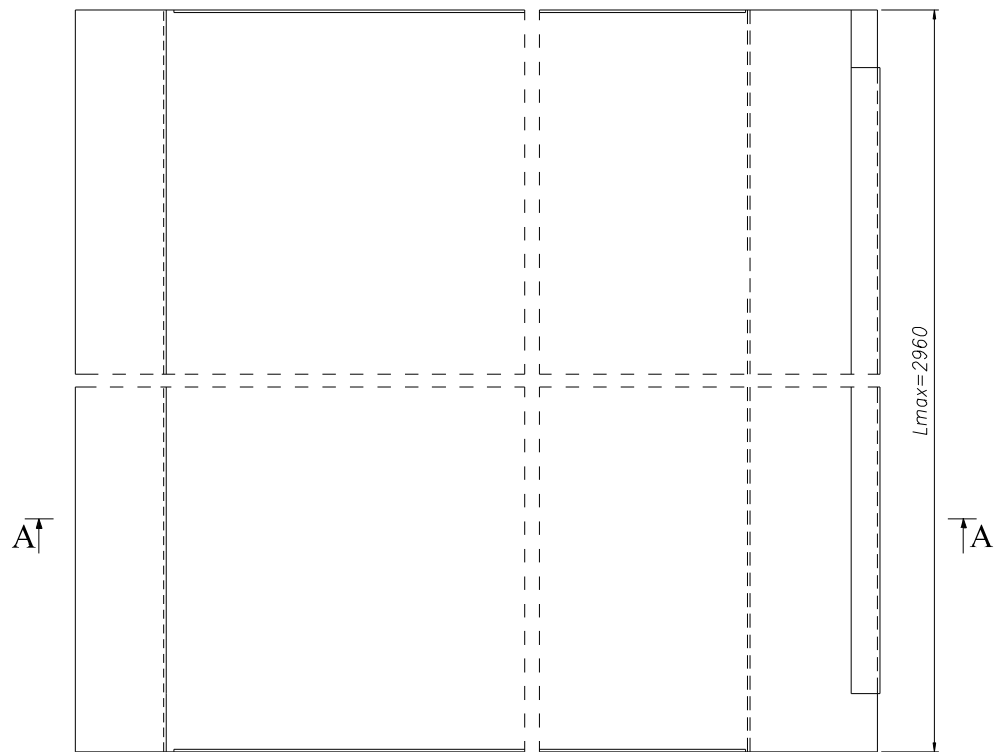
fax (067) 216-59-40

e-mail: [lubmor@lubmor.pl](mailto:lubmor@lubmor.pl)

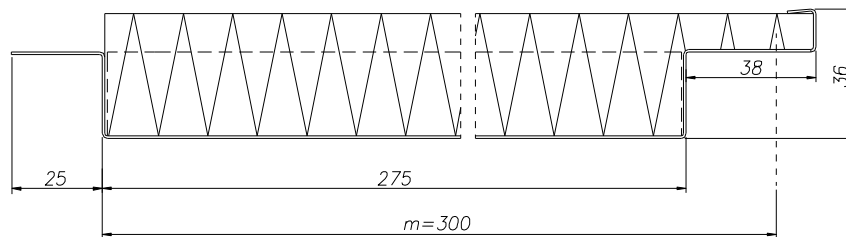
[www.lubmor.pl](http://www.lubmor.pl)

**CEILING PANEL B0**

**KK24-09  
31-C6/01**



A-A



- Dimension:** mxL - module of panels x length, is stated by orderer (Lmax=2960 mm)
- Material and finishing:**
- galv. steel sheet of core thick. 0,7 mm covered with PVC foil or painted, protected of protection foil
  - Mineral wool of density 40 kg/m<sup>3</sup>, trick. 35 mm,
  - glue.

**Example of marking:** Initially ceiling panel B0 of module m=300 mm and length L=2400 mm, lacquered in colour Ral 9010

**INITIALLY CEILING PANEL B0**  
**300x2400/Ral 9010**

**KK24-09/31-C6/02**

- Remarks:**
1. It is permitted to order the panels with other module „m” (i.e. m=200).
  2. It is also permitted to use stainless steel sheet of core thick.

Mass: 2,34 kg/r.m.



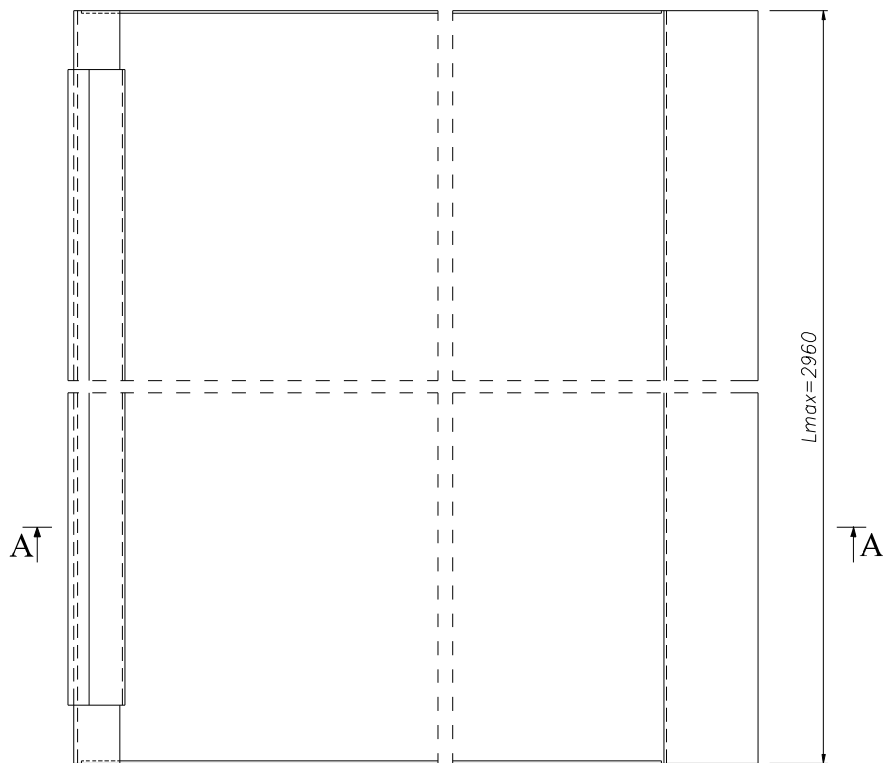
**LUBMOR Ltd.**

Wieleńska 1 Str, 64-980 Trzcianka  
 phone (067) 216-22-44  
 fax (067) 216-59-40  
 e-mail: [lubmor@lubmor.pl](mailto:lubmor@lubmor.pl)  
[www.lubmor.pl](http://www.lubmor.pl)

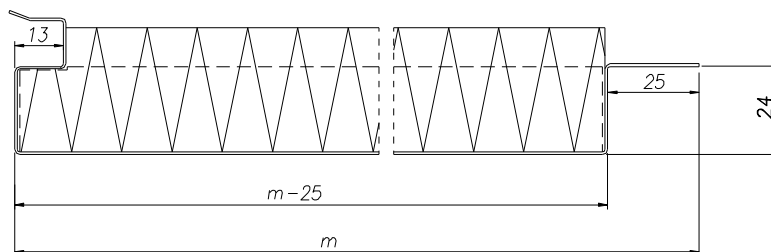
**INITIALLY CEILING  
 PANEL B0**

**KK24-09  
31-C6/02**





A-A



- Dimension:** mxL - module of panels x length, is stated by orderer (Lmax=2960 mm)
- Material and finishing:**
- galv. steel sheet of core thick. 0,7 mm covered with PVC foil or painted, protected of protection foil
  - Mineral wool of density 40 kg/m<sup>3</sup>, trick. 35 mm,
  - glue.

**Example of marking:** Final ceiling panel B0 of module m=215 mm and length L=2400 mm, lacquered in colour Ral 9010

**FINAL CEILING PANEL B0**  
**215x2400/Ral 9010**

**KK24-09/31-C6/03**

**Remark:** 1. It is also permitted to use stainless steel sheet of core thick. 0,6 mm.

Mass: 6,72 kg/q.m.

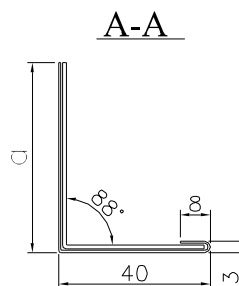
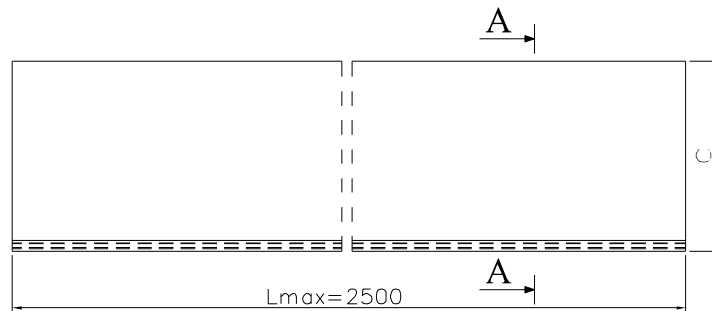


**LUBMOR Ltd.**

Wieleńska 1 Str, 64-980 Trzcianka  
 phone (067) 216-22-44  
 fax (067) 216-59-40  
 e-mail: [lubmor@lubmor.pl](mailto:lubmor@lubmor.pl)  
[www.lubmor.pl](http://www.lubmor.pl)

**FINAL CEILING  
 PANEL B0**

**KK24-09  
31-C6/03**



**Dimension:** axL - length is stated by the orderer (Lmax=2500 mm)

- Material and finishing:**
- galv. steel sheet with core thick. 1,0 mm,
  - galv. steel sheet with core thick. 0,7 mm covered with PVC foil or painted, protected of protection foil

**Example of marking:** Ceiling profile a=50 mm and length L=2500 covered of PVC foil in colour DOBEL 1306

**CEILING PROFILE 50x2500/D.1306**

**KK24-06/31-CP/01**

**Remarks:** Instead PVC covered steel sheet can be used stainless steel sheet with core thick. 0,6 mm.

a	MASS
mm	kg/r.m.
30	0,96
40	1,12
50	1,23



**LUBMOR Ltd.**

Wieleńska 1 Str, 64-980 Trzcianka

phone (067) 216-22-44

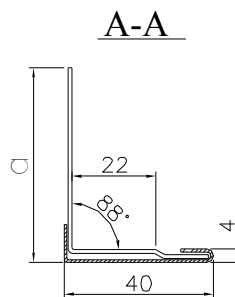
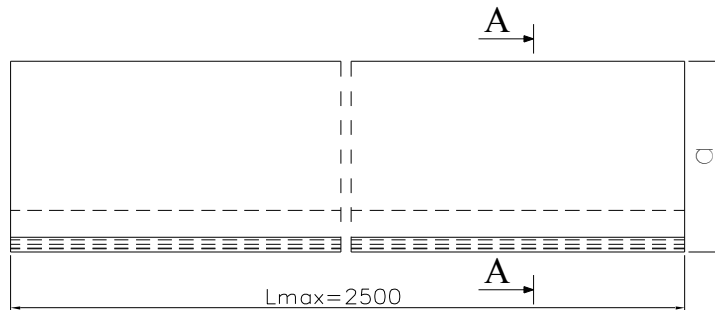
fax (067) 216-59-40

e-mail: [lubmor@lubmor.pl](mailto:lubmor@lubmor.pl)

[www.lubmor.pl](http://www.lubmor.pl)

**CEILING PROFILE**

**KK24-06  
31-CP/01**



**Dimension:** L - length is stated by the orderer (Lmax=2500 mm)

**Material and finishing:**

- galv. steel sheet of core thick. 1,0 mm,
- galv. steel sheet of core thick. 0,7 mm, covered of PVC foil or painted, protected of protection foil

**Example of marking:** Ceiling profile II a=40 mm and length L=2500 covered of PVC foil in colour DOBEL 1306

**CEILING PROFILE II 40x2500/D.1306**

**KK24-06/31-CP/02**

**Remarks:** Instead PVC covered steel sheet can be used stainless steel sheet with core thick. 0,6 mm.

a	MASS
mm	kg/r.m.
30	0,96
40	1,12
50	1,23



**LUBMOR Ltd.**

Wieleńska 1 Str, 64-980 Trzcianka

phone (067) 216-22-44

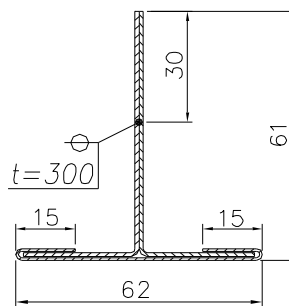
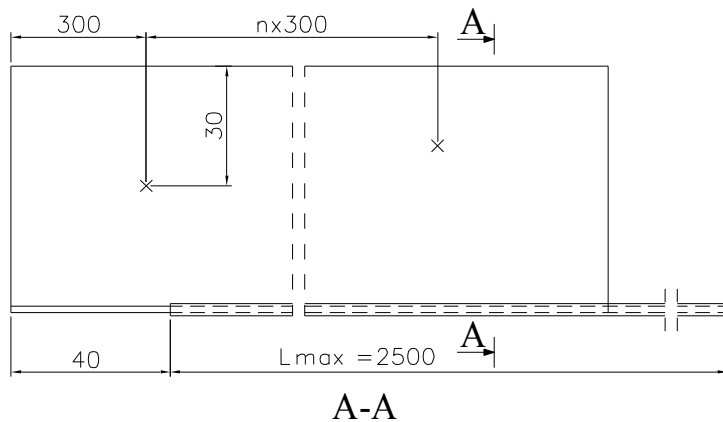
fax (067) 216-59-40

e-mail: [lubmor@lubmor.pl](mailto:lubmor@lubmor.pl)

[www.lubmor.pl](http://www.lubmor.pl)

**CEILING PROFILE II**

**KK24-06  
31-CP/02**



**Dimension:** L - length is stated by the orderer ( $L_{max} = 2500$  mm)

**Material and finishing:**

- galv. steel sheet of core thick. 1,5 mm,
- galv. steel sheet of core thick. 0,7 mm, covered of PVC foil or painted, protected of protection foil

**Example of marking:** Supporting profile of length  $L = 2500$  mm, covered with PVC foil in colour Dobel 1306

**SUPPORTING PROFILE 2300/D.1306**

**KK24-06/31-CP/03**

**Remarks:** Instead PVC covered steel sheet can be used stainless steel sheet with core thick. 0,6 mm.

Mass: 2,72 kg/r.m.



**LUBMOR Ltd.**

Wieleńska 1 Str, 64-980 Trzcianka

phone (067) 216-22-44

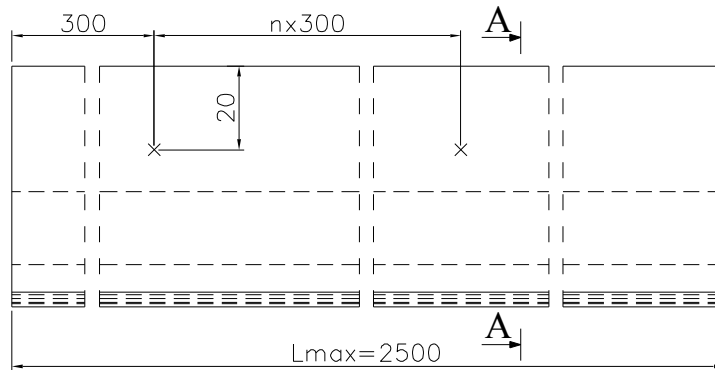
fax (067) 216-59-40

e-mail: [lubmor@lubmor.pl](mailto:lubmor@lubmor.pl)

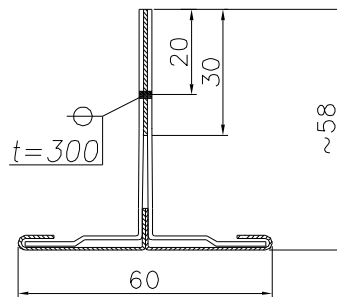
[www.lubmor.pl](http://www.lubmor.pl)

**SUPPORTING PROFILE**

**KK24-06  
31-CP/03**



**A-A**



**Dimension:** L - length is stated by the orderer ( $L_{max} = 2500$  mm)

**Material and finishing:**

- galv. steel sheet of core thick. 1,0 mm,
- galv. steel sheet of core thick. 1,5 mm,
- galv. steel sheet of core thick. 0,7 mm, covered of PVC foil or painted, protected of protection foil

**Example of marking:** Supporting profile II of length  $L = 2500$  mm, covered with PVC foil in colour Dobel 1306

**SUPPORTING PROFILE II 2300/D.1306**

**KK24-06/31-CP/04**

**Remarks:** Instead PVC covered steel sheet can be used stainless steel sheet with core thick. 0,6 mm.

Mass: 2,18 kg/r.m.



**LUBMOR Ltd.**

Wieleńska 1 Str, 64-980 Trzcianka

phone (067) 216-22-44

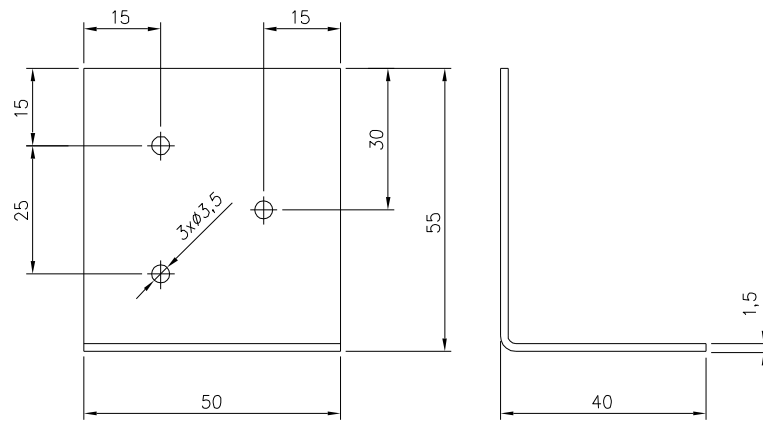
fax (067) 216-59-40

e-mail: [lubmor@lubmor.pl](mailto:lubmor@lubmor.pl)

[www.lubmor.pl](http://www.lubmor.pl)

**SUPPORTING PROFILE II**

**KK24-06**  
**31-CP/04**



**Material and finishing:** galv. steel sheet of core thick. 1,5 mm,

**Marking:** Connector of supporting profile  
**CONNECTOR OF SUPPORTING PROFILE KK24-06/31-CP/05**

Mass: **0,05 kg**



**LUBMOR Ltd.**

Wieleńska 1 Str, 64-980 Trzcianka

phone (067) 216-22-44

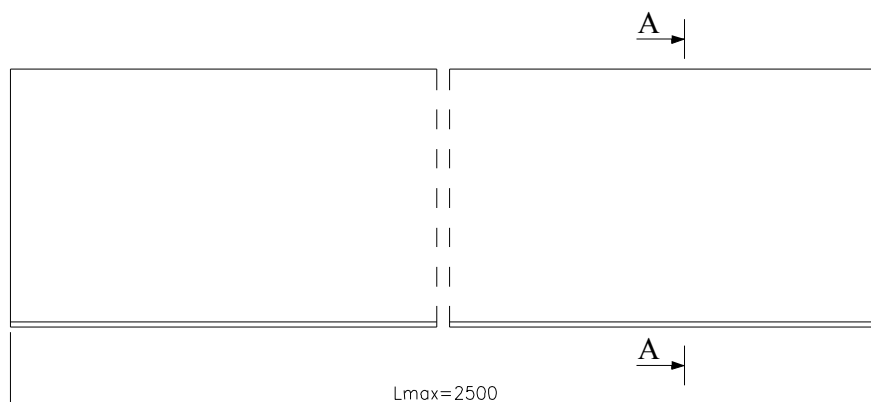
fax (067) 216-59-40

e-mail: [lubmor@lubmor.pl](mailto:lubmor@lubmor.pl)

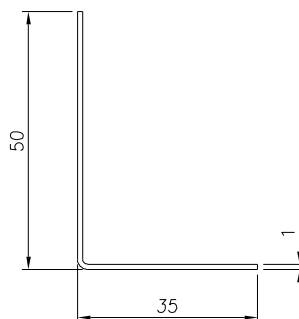
[www.lubmor.pl](http://www.lubmor.pl)

**CONNECTOR OF  
SUPPORTING PROFILE**

**KK24-06  
31-CP/05**



A-A



**Material and finishing:** galv. steel sheet of core thick. 1,0 mm,

**Marking:** Fixing profile

**FIXING PROFILE**

**KK24-06/31-CP/06**

**Remark:** State in r.m.

Mass: **0,66 kg/r.m.**



**LUBMOR Ltd.**

Wieleńska 1 Str, 64-980 Trzcianka

phone (067) 216-22-44

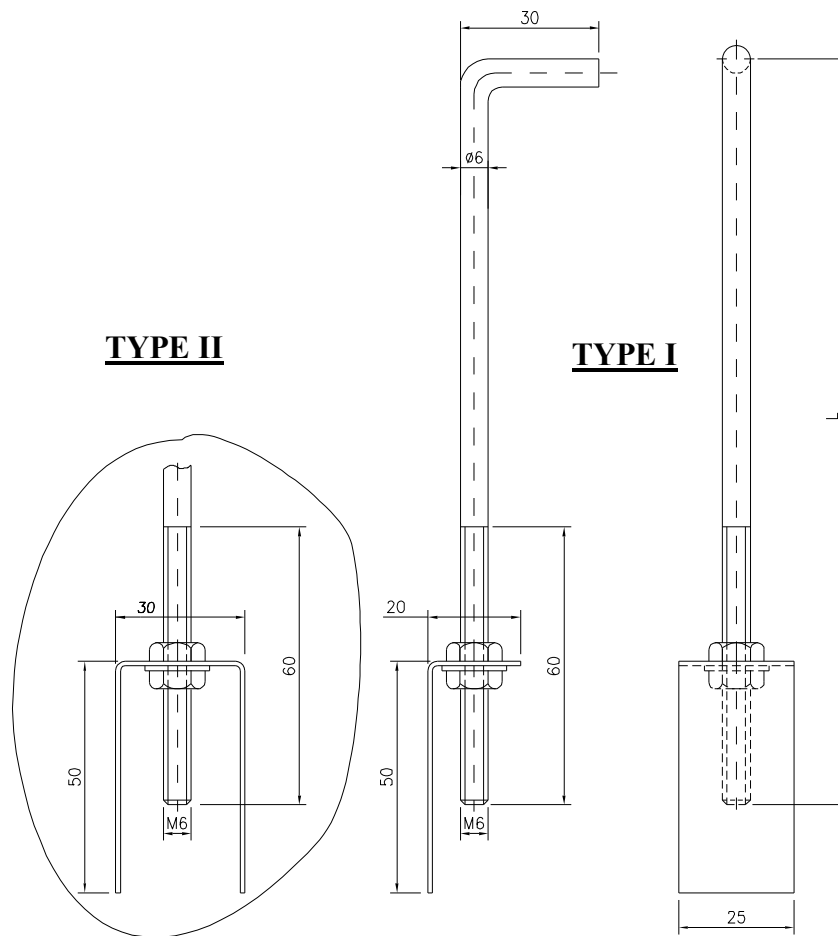
fax (067) 216-59-40

e-mail: [lubmor@lubmor.pl](mailto:lubmor@lubmor.pl)

[www.lubmor.pl](http://www.lubmor.pl)

**FIXING PROFILE**

**KK24-06**  
**31-CP/06**



**Types** I, II - acc. to drawing

**Dimension:** L - length is stated by the orderer

- Material and finishing:**
- galv. steel sheet of core thick. 1,0 mm,
  - galv. steel rod of dia.  $\varnothing$  6 mm,
  - nut M6 (2 pcs.),
  - galv. washer dia.  $\varnothing$  6,5 mm (1 pc.)

**Example of marking:** Hanger type I of thick. L=500 mm

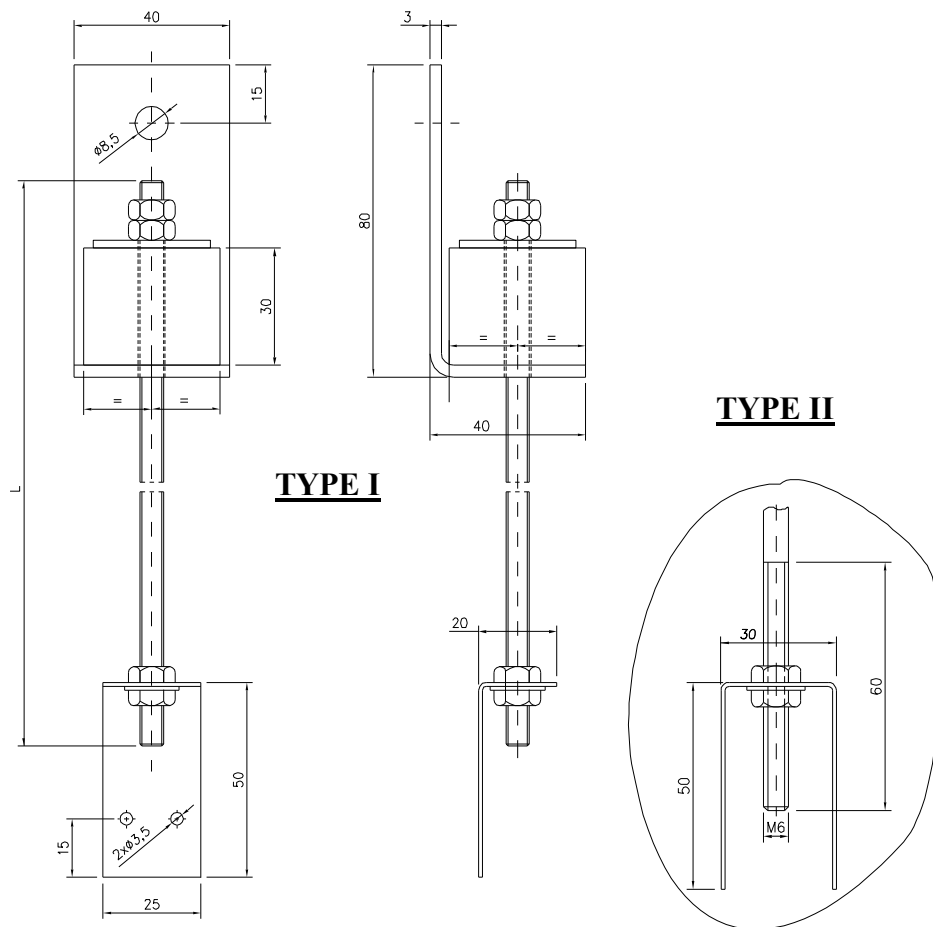
**HANGER I/500**

**KK24-10/31-CP/07**

- Remarks:**
1. Given weight of hanger don't includest a weight of rod. Total weight of hanger can be calculated by adding to given weight additionally 0,02 kg per every 100 mm length of rod.
  2. Hanger type II apply to hang up the connecting ceiling profiles acc. to KK 24-10/31-CP/14.

<p>Mass: <b>0,019 kg</b></p>	 <p><b>LUBMOR Ltd.</b>  Wieleńska 1 Str, 64-980 Trzcianka  phone (067) 216-22-44  fax (067) 216-59-40  e-mail: <a href="mailto:lubmor@lubmor.pl">lubmor@lubmor.pl</a>  <a href="http://www.lubmor.pl">www.lubmor.pl</a></p>	
	<p><b>HANGER</b></p>	<p><b>KK24-10 31-CP/07</b></p>





**Types:** I, II - acc. to drawing

**Dimension:** L - length is stated by the orderer

- Material and finishing:**
- galv. steel sheet of core thick. 1,0 mm,
  - steel plate of thick. 3,0 mm,
  - galv. steel rod dia.  $\varnothing$  6 mm (thread on whole length),
  - nut M6 (4 pcs.),
  - galv. washer dia.  $\varnothing$  6,5 mm (1 pc.)
  - galv. large washer dia.  $\varnothing$  7-  $\varnothing$  30 mm (1 pc.)
  - rubber shock—absorber

**Example of marking:** Elastic hanger type I of length L=500 mm

**ELASTIC HANGER I/500                      KK24-10/31-CP/08**

- Remarks:**
1. Given weight don't consist a weight of rod. Total weight of hanger can be calculated by adding to given weight additionally 0,02 kg per every 100 mm length of rod.
  2. Hanger type II apply to hang up the connecting ceiling profiles acc. to KK 24-10/31-CP/14.

Mass: **0,137 kg**



**LUBMOR Ltd.**

Wieleńska 1 Str, 64-980 Trzcianka

phone (067) 216-22-44

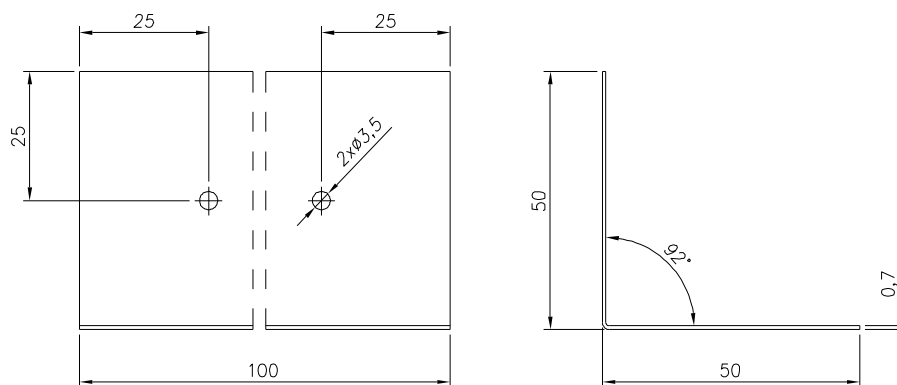
fax (067) 216-59-40

e-mail: [lubmor@lubmor.pl](mailto:lubmor@lubmor.pl)

[www.lubmor.pl](http://www.lubmor.pl)

**ELASTIC HANGER**

**KK24-10**  
**31-CP/08**



**Material and finishing:** galv. steel sheet of core thick. 0,7 mm,

**Marking:** Set profile  
**SET PROFILE**

**KK24-06/31-CP/09**

Mass: **0,05 kg**



**LUBMOR Ltd.**

Wieleńska 1 Str, 64-980 Trzcianka

phone (067) 216-22-44

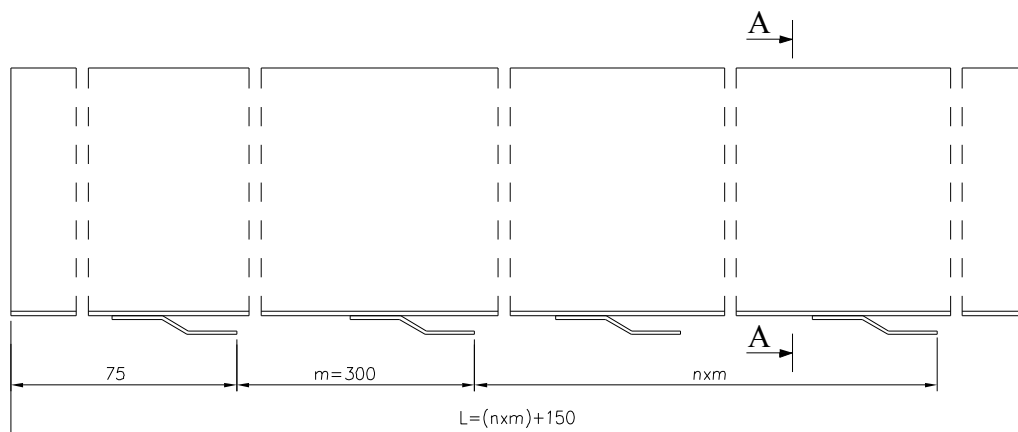
fax (067) 216-59-40

e-mail: [lubmor@lubmor.pl](mailto:lubmor@lubmor.pl)

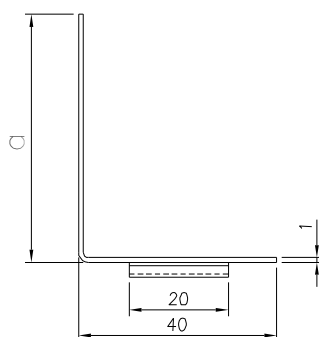
[www.lubmor.pl](http://www.lubmor.pl)

**SET PROFILE**

**KK24-06**  
**31-CP/09**



A-A



**Dimension:** a x L - length is stated by the orderer

**Material and finishing:** • galv. steel sheet of core thick. 1,0 mm,

**Example of marking:** Girder a=30 mm ang lenght L=1050 mm

**GIRDER 30x1050**

**KK24-06/31-CP/10**

a	MASS
mm	kg/r.m.
30	0,54
40	0,62
50	0,71



**LUBMOR Ltd.**

Wieleńska 1 Str, 64-980 Trzcianka

phone (067) 216-22-44

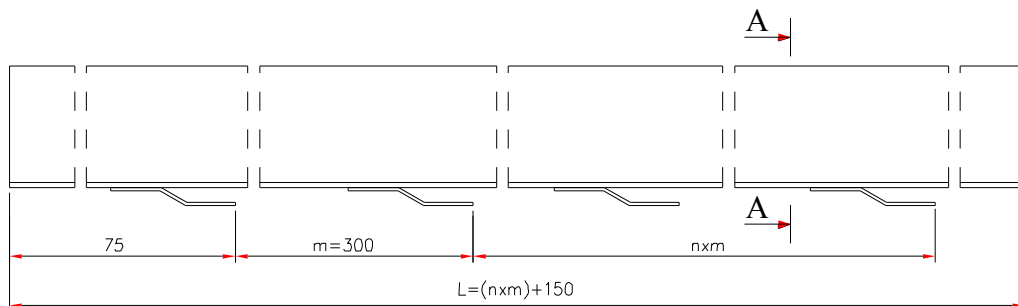
fax (067) 216-59-40

e-mail: [lubmor@lubmor.pl](mailto:lubmor@lubmor.pl)

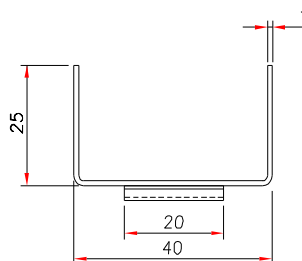
[www.lubmor.pl](http://www.lubmor.pl)

**GIRDER**

**KK24-06  
31-CP/10**



A-A



**Dimension:** L - length is stated by the orderer

**Material and finishing:** • galv. steel sheet of core thick. 1,0 mm,

**Example of marking:** Girder II of thick. L=1050 mm

**GIRDER II 1050**

**KK24-06/31-CP/12**

Mass: 0,71 kg/r.m.



**LUBMOR Ltd.**

Wieleńska 1 Str, 64-980 Trzcianka

phone (067) 216-22-44

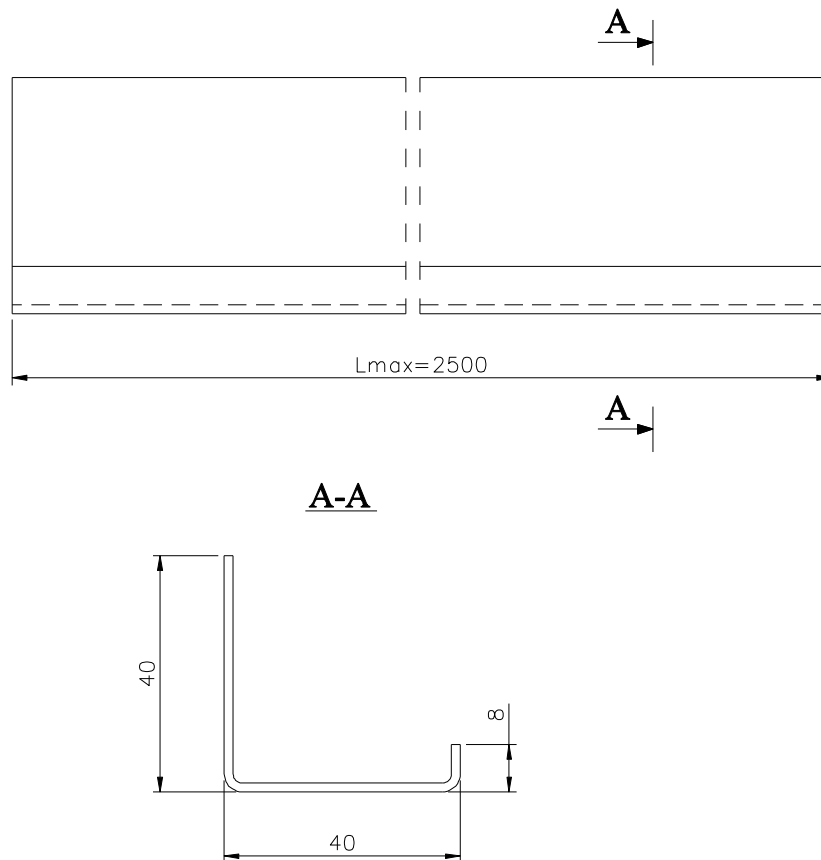
fax (067) 216-59-40

e-mail: [lubmor@lubmor.pl](mailto:lubmor@lubmor.pl)

[www.lubmor.pl](http://www.lubmor.pl)

**GIRDER II**

**KK24-06  
31-CP/12**



**Dimension:** L - length is stated by the orderer (Lmax=2500 mm)  
**Material and finishing:** • galv. steel sheet of core thick. 1,5 mm, painted in ceiling colour

**Example of marking:** Supporting ceiling profile, of length L=2400 mm, lacquered in colour Ral 9010

**SUPPORTING CEILING PROFILE 2400/Ral 9010**  
**KK24-10/31-CP/13**

Mass: 1,01 kg/r.m.



**LUBMOR Sp. z o.o.**

ul. Wieleńska 1, 64-980 Trzcianka

tel. (067) 216-22-44

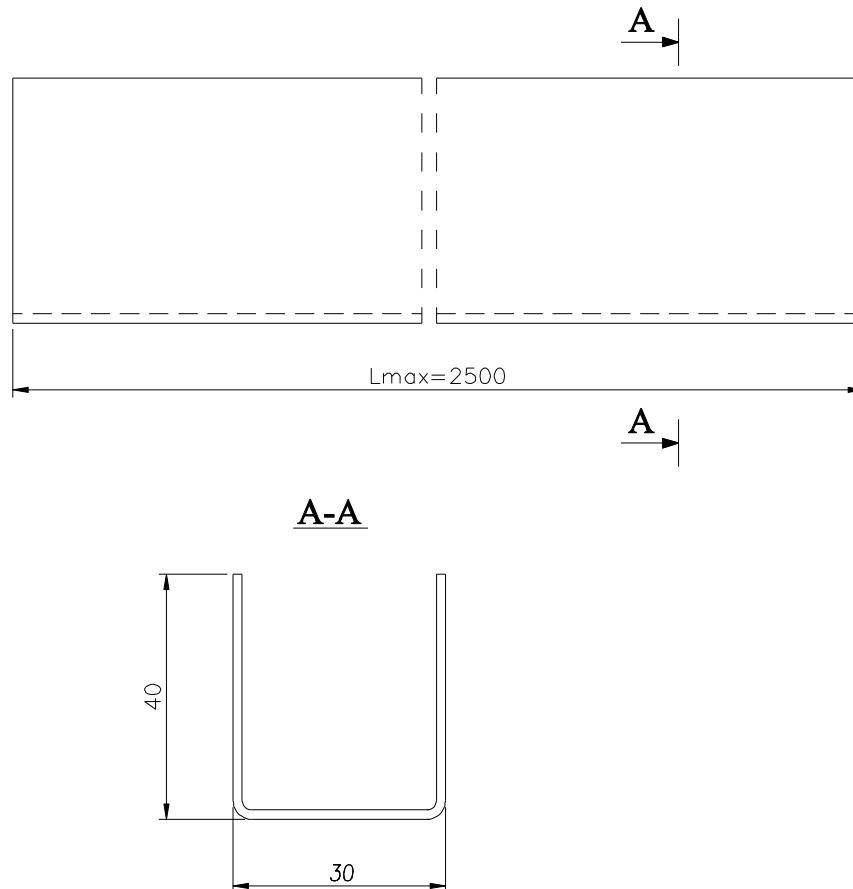
fax (067) 216-59-40

e-mail: [lubmor@lubmor.pl](mailto:lubmor@lubmor.pl)

[www.lubmor.pl](http://www.lubmor.pl)

**SUPPORTING CEILING  
 PROFILE**

**KK24-10  
31-CP/13**



**Dimension:** L - length is stated by the orderer (Lmax=2500 mm)  
**Material and finishing:** • galv. steel sheet of core thick. 1,5 mm

**Example of marking:** Connecting ceiling profile, of length L=2400 mm  
**CONNECTING CEILING PROFILE 2400/Ral 9010**  
**KK24-10/31-CP/14**

Mass: 1,41 kg/r.m.



**LUBMOR Sp. z o.o.**

ul. Wieleńska 1, 64-980 Trzcianka

tel. (067) 216-22-44

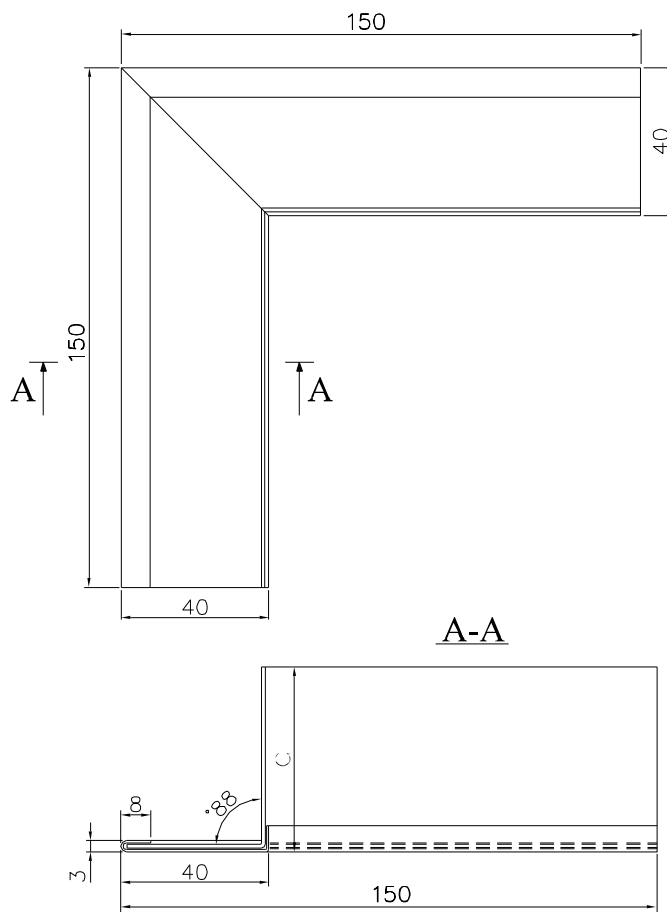
fax (067) 216-59-40

e-mail: [lubmor@lubmor.pl](mailto:lubmor@lubmor.pl)

[www.lubmor.pl](http://www.lubmor.pl)

**CONNECTING CEILING  
 PROFILE**

**KK24-10  
31-CP/14**



- Dimension:** a - is stated by the orderer
- Material and finishing:**
- galv. steel sheet of core thick. 1,0 mm,
  - galv. steel sheet of core thick. 0,7 mm, covered of PVC foil or painted, protected of protecion foil
- Example of marking:** Outside corner a=40 mm covered of PVC foil in colour DOBEL 1306

**OUTSIDE CORNER 40/D.1306**

**KK24-06/31-CP/18**

**Remarks:** Instead PVC covered steel sheet can be used stainless steel sheet with core thick. 0,6 mm.

a	MASS
mm	kg/r.m.
30	0,28
40	0,34
50	0,37

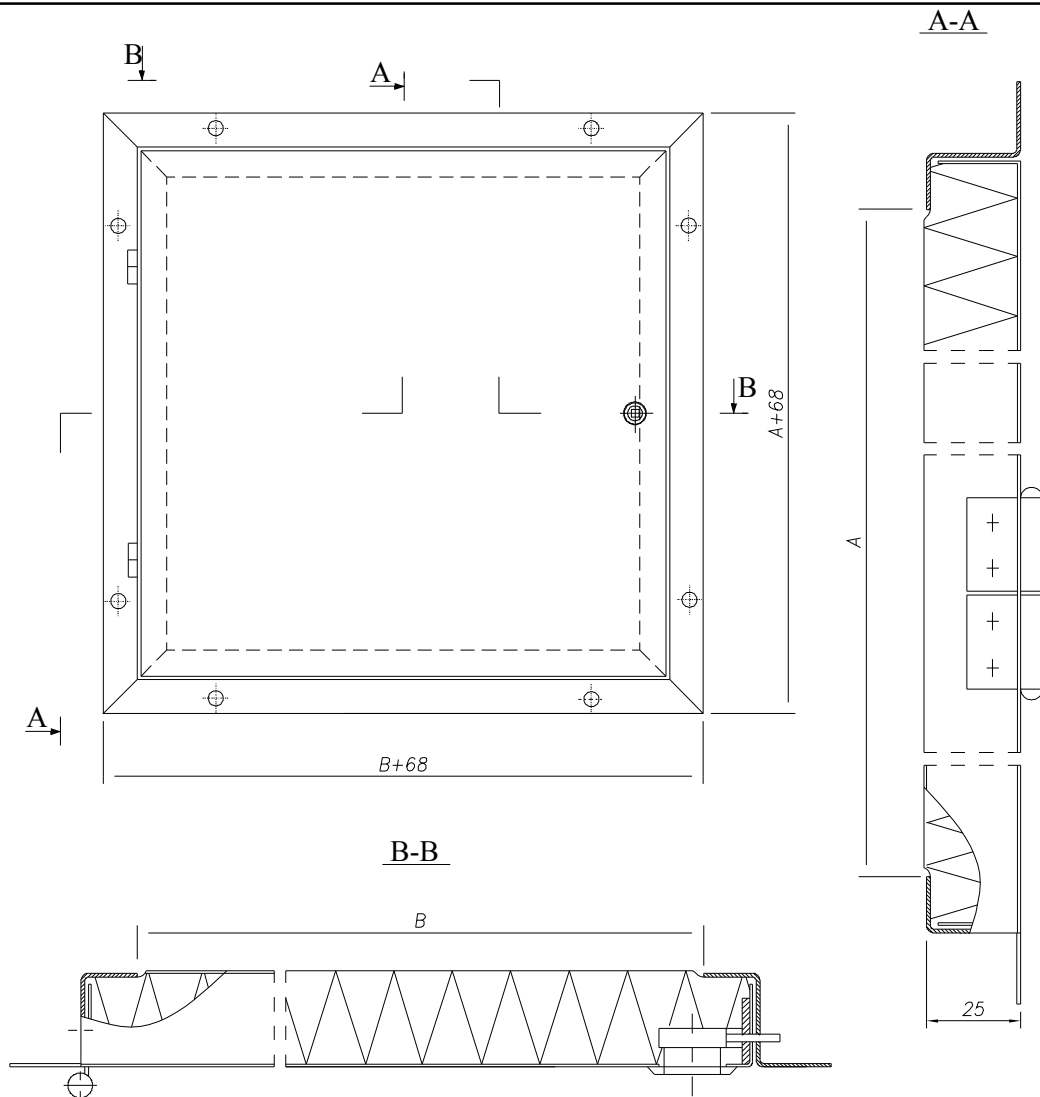


**LUBMOR Ltd.**

Wieleńska 1 Str, 64-980 Trzcianka  
 phone (067) 216-22-44  
 fax (067) 216-59-40  
 e-mail: [lubmor@lubmor.pl](mailto:lubmor@lubmor.pl)  
[www.lubmor.pl](http://www.lubmor.pl)

**OUTSIDE CORNER**

**KK24-06**  
**31-CP/18**



**Dimension:** AxB - c.o. of door is stated by the orderer

- Material and finishing:**
- galv. steel sheet with core thick. 0,7 mm covered with PVC foil or painted, protected by protection foil,
  - galv. steel sheet with core thick. 1,0 mm painted,
  - mineral wool with density 110 kg/m<sup>3</sup>, thick. 25 mm,
  - glue.

**Fittings:** hinge (2 pcs), mortise turn-buckle with nut (1 pc)

**Example of marking:** ceiling door c.o. AxB = 350x240 mm, door-leaf covered of PVC foil with colour Dobel 1306, fixing frame painted Ral 9010

**CEILING DOOR 350x240/D.1306-Ral 9010**

**KK24-06/31-CP/20**

**Remark:** There is permitted to order ceiling door with other dimension compare to tabel.

A	B	MASS
mm		kg
200	200	1,01
300	240	1,36
350		1,49
450	450	2,55
500	500	2,94



**LUBMOR Ltd.**

Wieleńska 1 Str, 64-980 Trzcianka

phone (067) 216-22-44

fax (067) 216-59-40

e-mail: [lubmor@lubmor.pl](mailto:lubmor@lubmor.pl)

[www.lubmor.pl](http://www.lubmor.pl)

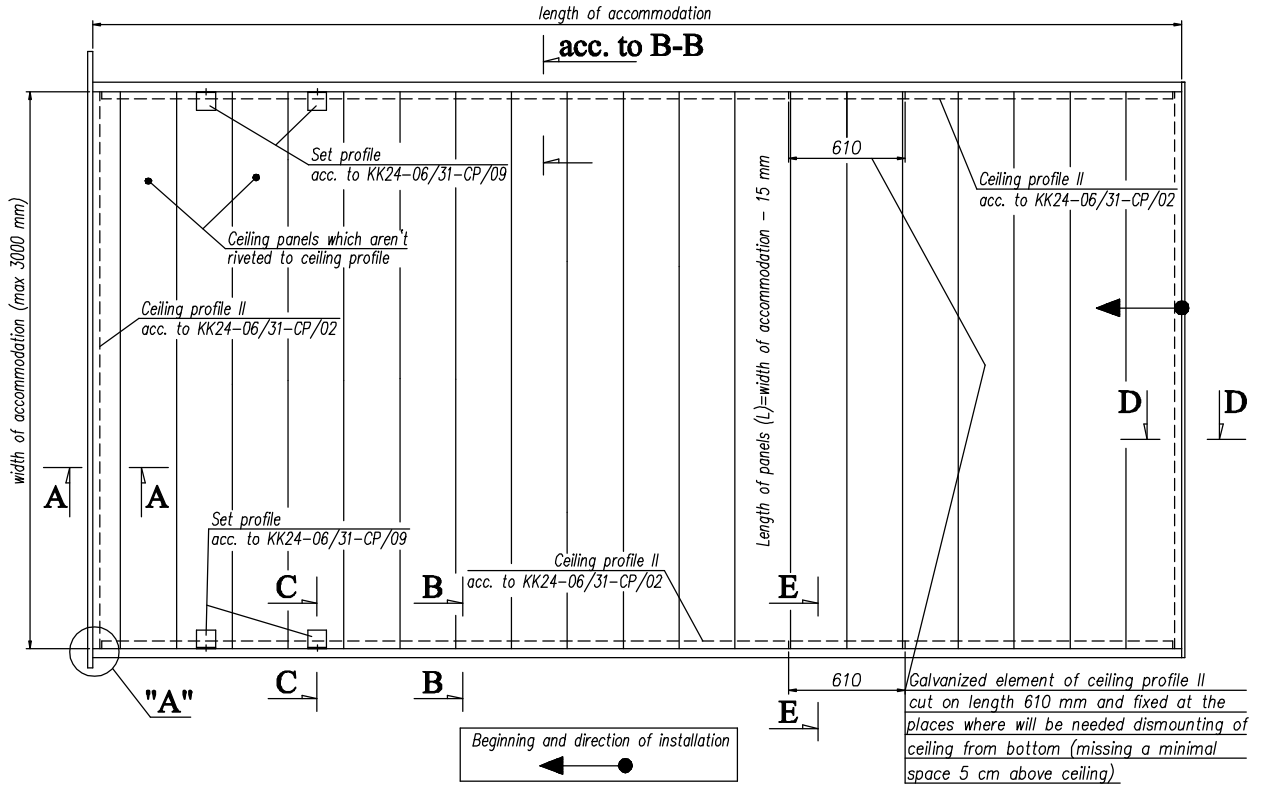
**CEILING DOOR**

**KK24-06  
31-CP/20**

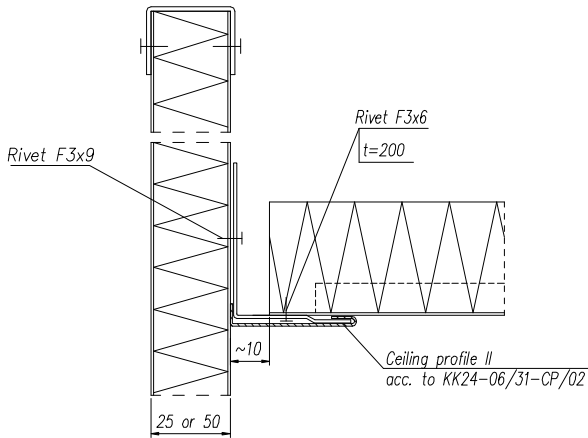


# CONSTRUCTION DETAIL INSTALLATION OF CEILING IN EXAMPLARY ACCOMMODATION

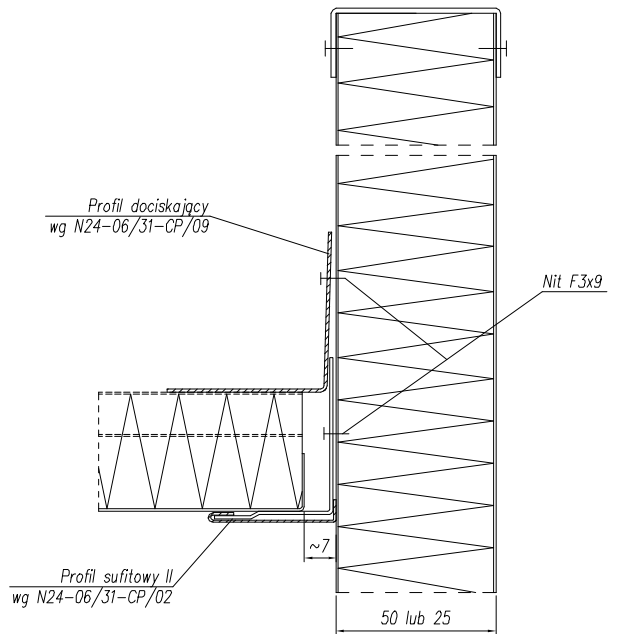
## Ceiling panels riveted to the profiles



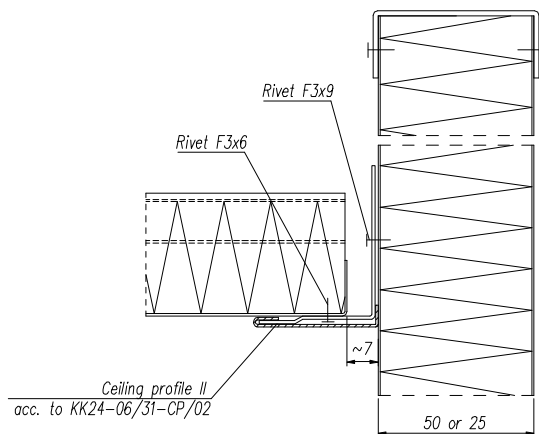
**A-A**



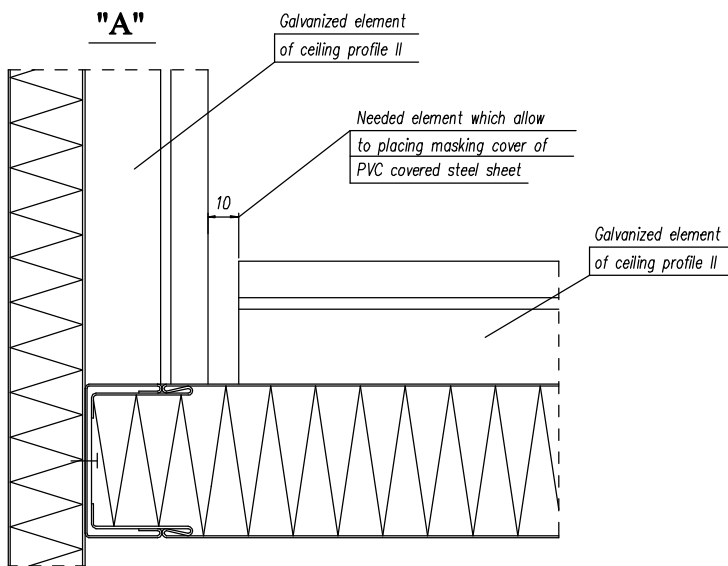
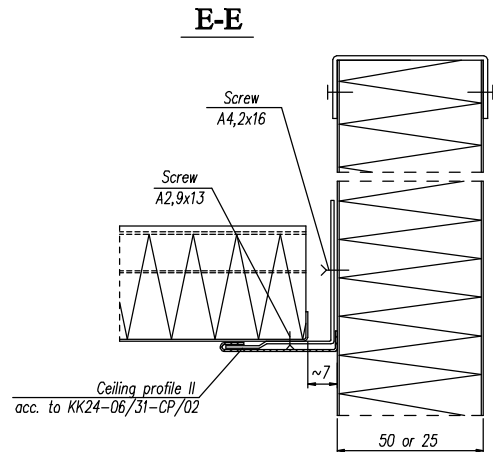
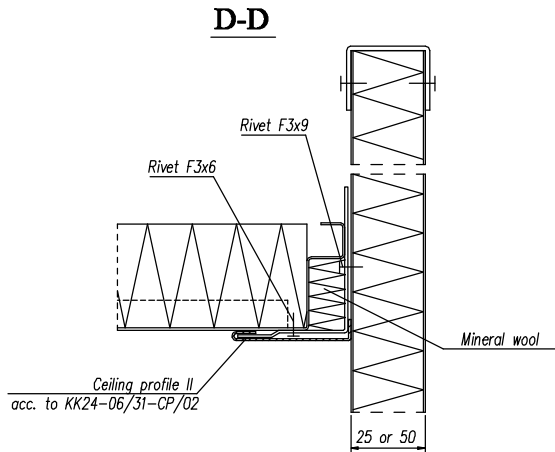
**C-C**



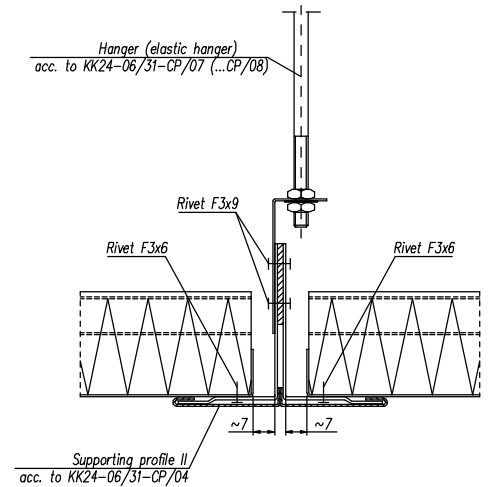
**B-B**



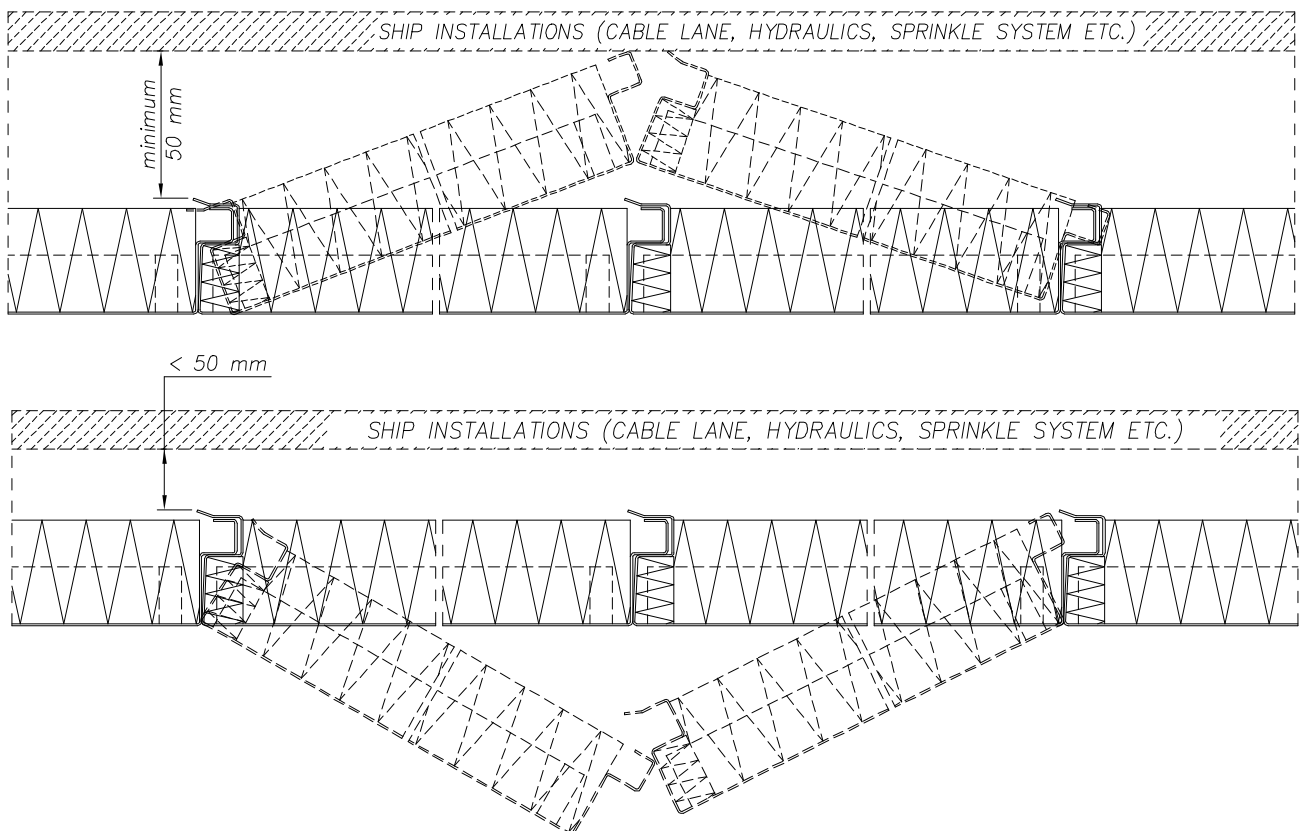
# CONSTRUCTION DETAIL INSTALLATION OF CEILING IN EXAMPLARY ACCOMMODATION



## INSTALLATION OF CEILING IN ACCOMMODATION OF WIDTH MORE THAN 3000 mm

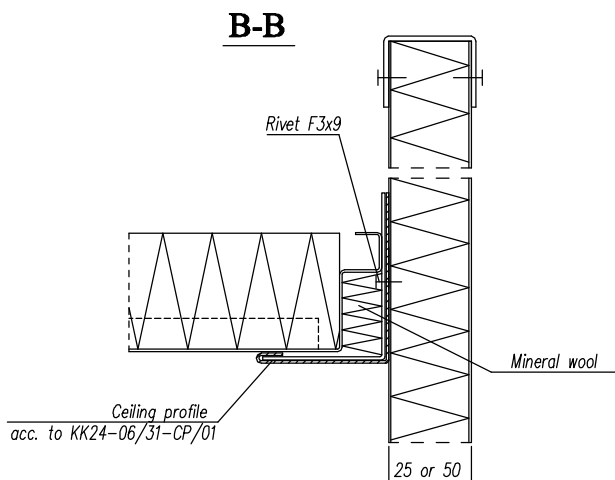
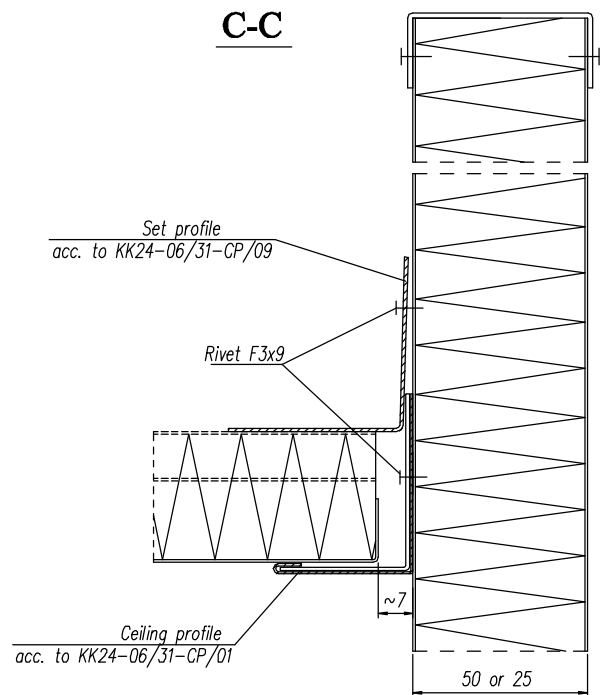
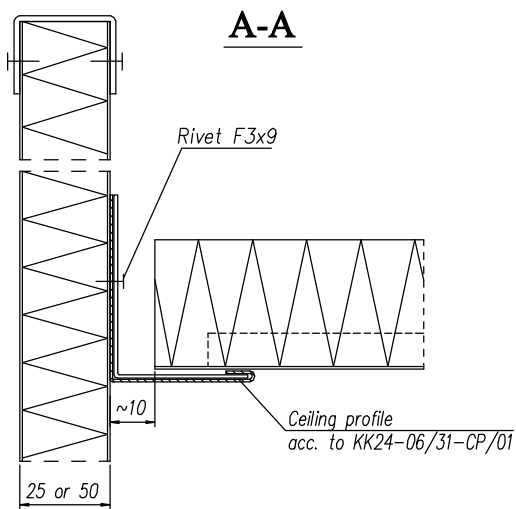
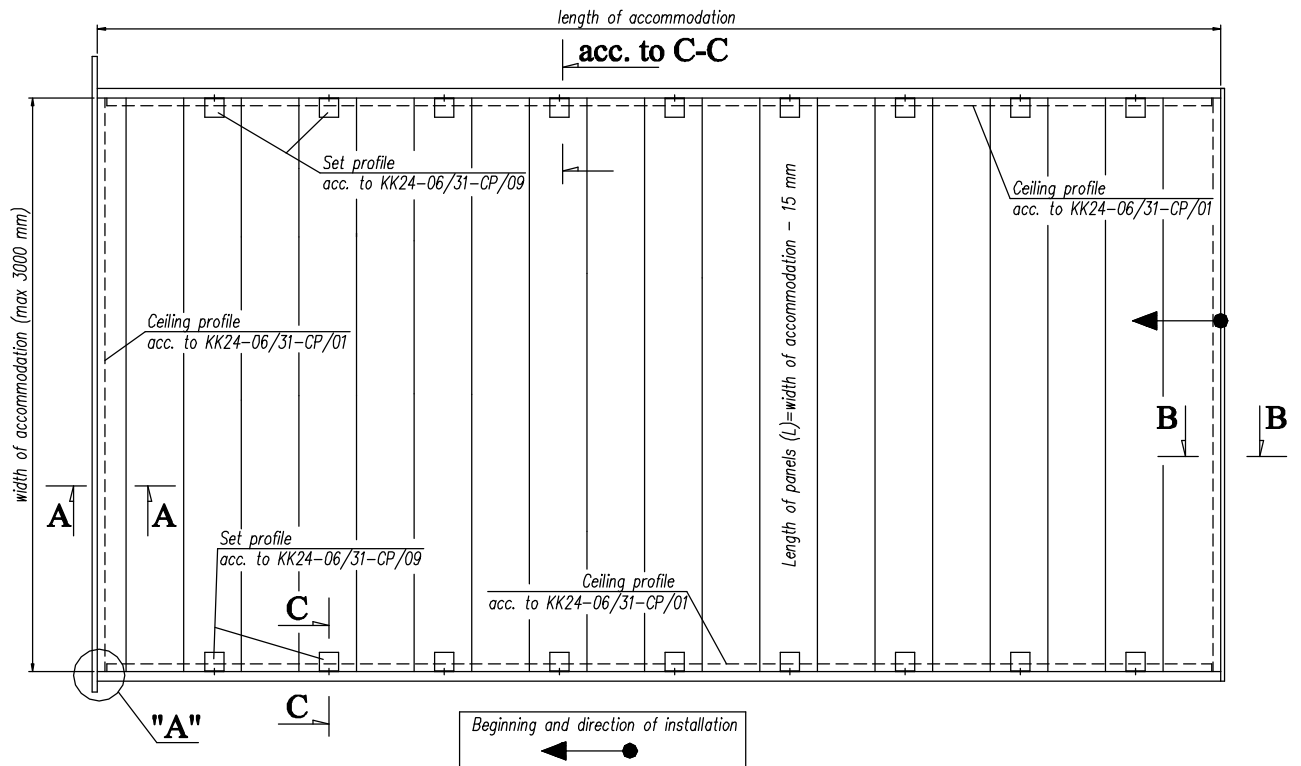


## DISMOUNTING OF CEILING PANELS



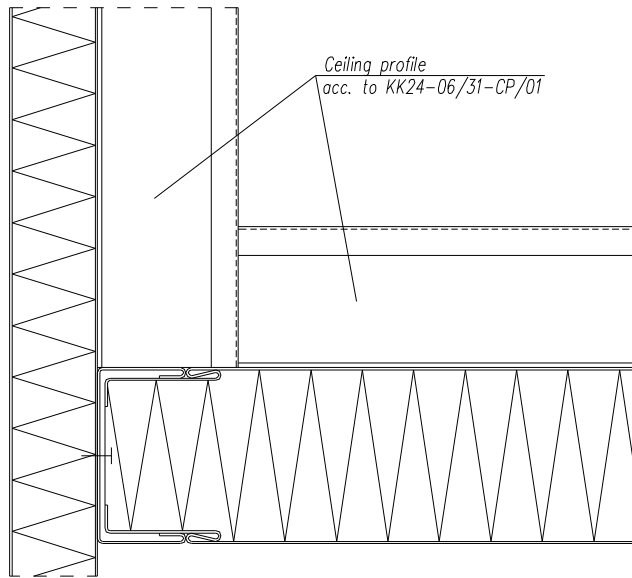
# CONSTRUCTION DETAIL INSTALLATION OF CEILING IN EXAMPLARY ACCOMMODATION

## Ceiling panels pushed to the profiles

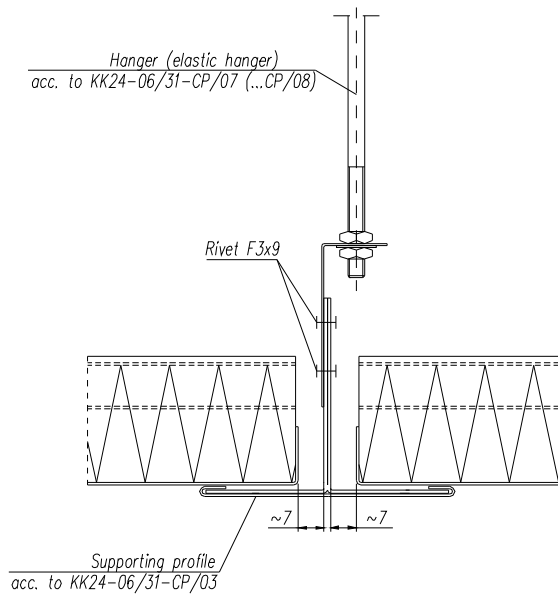


# CONSTRUCTION DETAIL INSTALLATION OF CEILING IN EXAMPLARY ACCOMMODATION

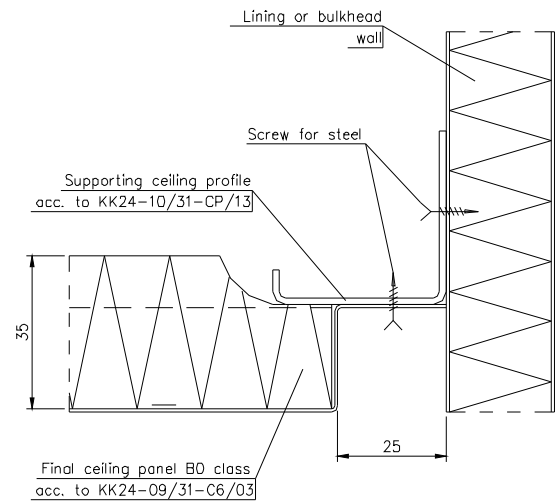
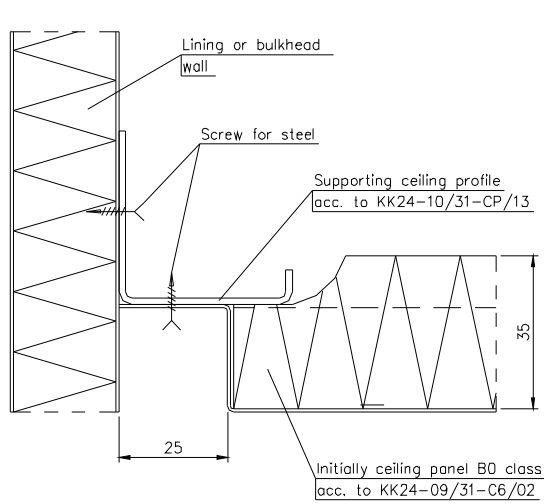
"A"



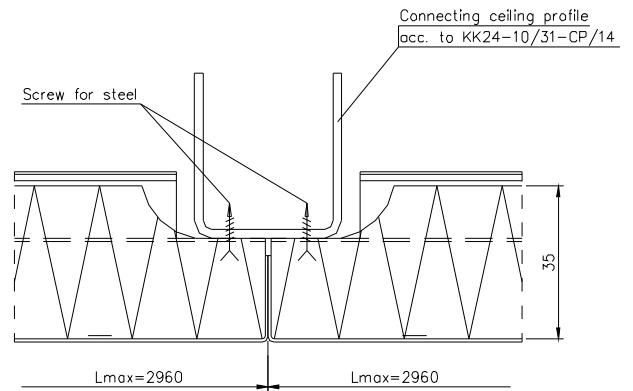
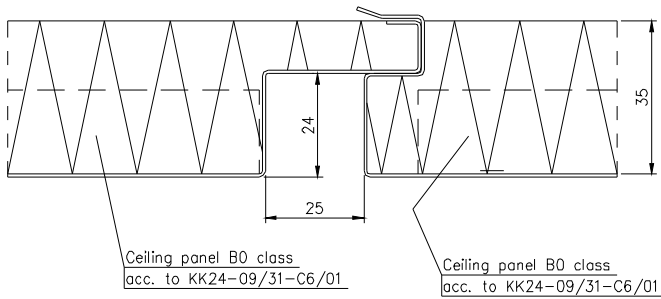
INSTALLATION OF CEILING IN  
ACCOMMODATION OF WIDTH MORE  
THAN 3000 mm



# CONSTRUCTION DETAIL OF INSTALLATION - - CEILING acc. to KK24-09/31-C6



## INSTALLATION OF CEILING IN ACCOMMODATION OF WIDTH MORE THAN 3000 mm



## TRANSVERSE CUT OF THE ACCOMMODATION

