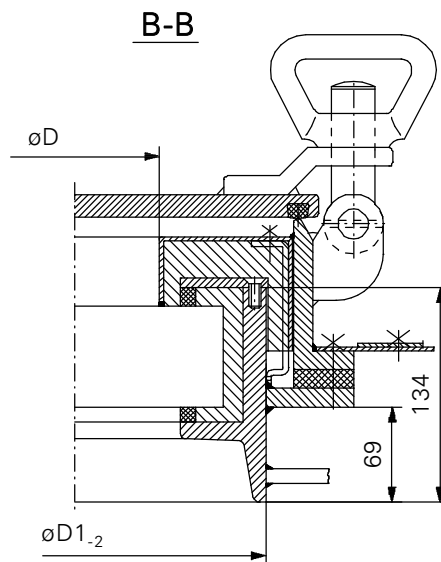
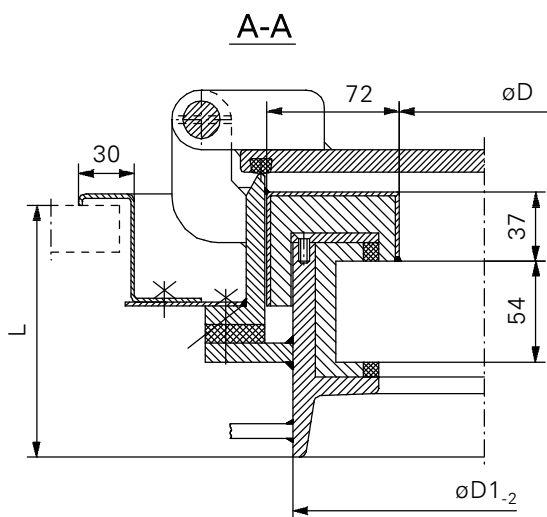
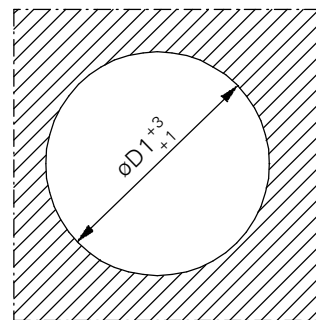


Hole in ship steel wall



L.p.	ϕD	$\phi D1$	A	R
1	200	318	564	187
2	250	368	614	212
3	300	418	664	237
4	350	468	714	262
5	400	518	764	287



LUBMOR Sp. z o.o.

ul. Wieleńska 1, 64-980 Trzcianka

tel. +48/67/216-22-44

fax +48/67/216-59-40

e-mail: marketing@lubmor.pl

e-mail: konstrukcja@lubmor.pl

**SIDE SCUTTLE CLASS A60
WITH DEADLIGHT**

**KK 24-98
30-300/A**

SIDE SCUTTLE CLASS A60 WITH DEADLIGHT

APPROPRATION

Side scuttles class A60 are designed for using on the water ships.

EXECUTION

Side scuttle is made according to requirements of Polish and international standards.

Side scuttle is made of steel frame, glass list and deadlight, set of the glasses and side scuttle box. The frame is connected with glass list by the screws. Steel frame of deadlight is fixed to frame of side scuttle by means of the bolts. A space between glass and frame of side scuttle and box is filled of fireproof insulation. Fire – proof glass is mounted with toughened glass pane of standard thickness 10 mm. Total thickness set of the glasses and depth of the frame depends on thickness of toughened glass pane. In case the customer wish himself other thickness of toughened glass, he should to state it during sending an order. Box of side scuttle is made of steel sheet thick. 2 mm. The frames of side scuttle and deadlight, deadlight are protected against corrosion with epoxy primer thick. 40 μm . The place covered of insulation is protected with painting set which consists three epoxy paints of total thick. 100 μm .

Visible surfaces of side scuttle box are finished of white stove paint.

DELIVERY RANG

Complete side scuttle together with the box to be delivered to the customer.

PACKING , TRANSPORT , STORAGE

The glass pane is protected with foil.

This foil is removed after mounting of side scuttle on the ship.

The side scuttles are delivered on the pallets without packing.

The goods should be transported with dry, clean and lided trucks in order to avoid their dislocation and mechanical damages.

The side scuttles should be stored in closed accommodations ensuring the same conditions like they were in transport. They should also be protected against the agents which might to cause damage of the gaskets.

EXAMPLE OF DESIGNATION

Side scuttle class A60 with deadlight clear opening $D = 400$ mm, thicknes of boarding $L=200$ mm acc. to KK 24-98/30-300/A.

SIDE SCUTTLE A60 400 L = 200 acc. to catalogue card KK 24-98/30-300/A.

This catalogue card corresponds with drawing no N 24-98/30-300/A.