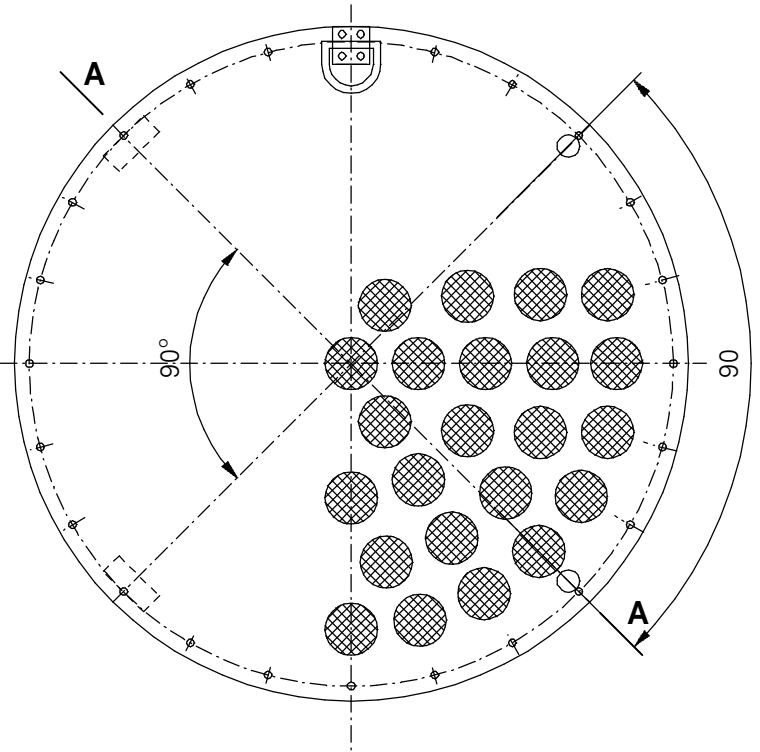
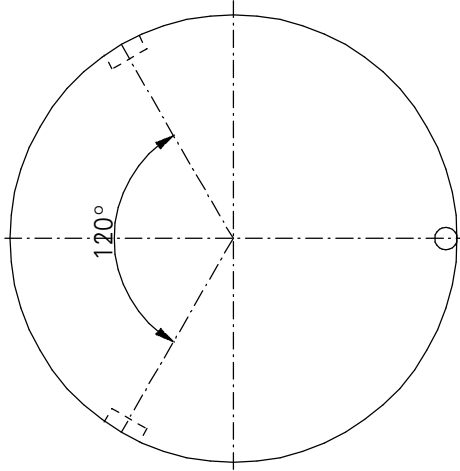
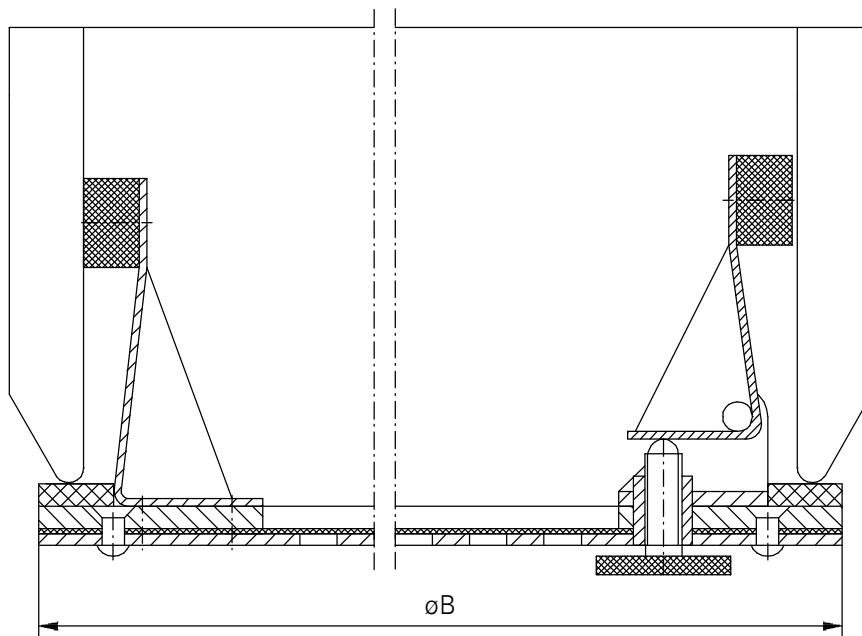


SPACING OF POINT SETS IN SHIELDS FOR SIDE SCUTTLE LOWER THAN $\varnothing 400$



A-A



side scuttle diameter	$\varnothing B$	Mass (kg)
$\varnothing 200$	242	0,8
$\varnothing 250$	292	1,0
$\varnothing 300$	352	1,3
$\varnothing 350$	402	1,5
$\varnothing 400$	452	1,9



LUBMOR Ltd.

ul. Wieleńska 1, 64-980 Trzcianka
 tel. +48/67/216-22-44
 fax +48/67/216-59-40
 e-mail: marketing@lubmor.pl
 e-mail: konstrukcja@lubmor.pl

**ANTIMOSQUITO SHIELD
 FOR SIDE SCUTTLE**

**KI 24-99
 30-400**

ANTIMOSQUITO SHIELD FOR SIDE SCUTTLE

APPROPRATION

Antimosquito shield is designed for opened side scuttles used on the ships .

EXECUTION

The shield is made of stainless steel ring for which is rivetted a stainless steel sieve 1000 x 0,8 x 0, 315 mm and perforated stainless steel sheet with holes \varnothing 35 mm .

The shield for side scuttle \varnothing 400 hase got two regulated and fixed pressing points made of stainless steel .

The shield for side scuttle of diameter lower than \varnothing 400 mm hase got a one regulated and two fixed pressing points .

Around the shield a rubber seal is mounted .

DELIVERY RANG

Delivery set comprises a complete a mounted shield .

PACKING , TRANSPORT , STORAGE

The shield is delivered in packing included maximum 10 pcs onces .

These shields are stiffened of plate and protected of foil .

The shields should be delivered by dry , clean and roofed transport truck . They should also be protected against displacing , mechanical damages and the agents which might to cause the gaskets damages .

The shields should be stored in closed accommodations where are the same conditions as in transport .

EXAMPLE OF DESIGNATION

Antimoquito shield for side scuttle \varnothing 400 .

ANTIMOSQUITO SHIELD \varnothing 400 acc . to information card no KI 24-99/30-400.

This catalogue card corresponds with drawing no N 24-99/30-400.