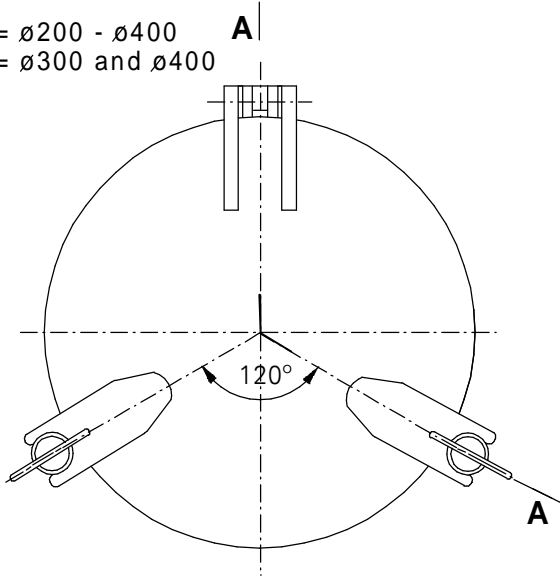
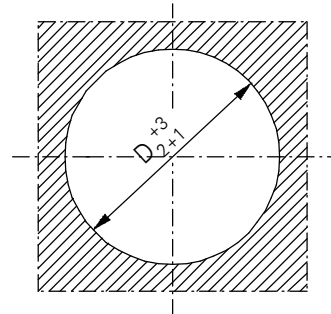


TYPE A $D_1 = \varnothing 200 - \varnothing 400$
 TYPE B $D_1 = \varnothing 300$ and $\varnothing 400$

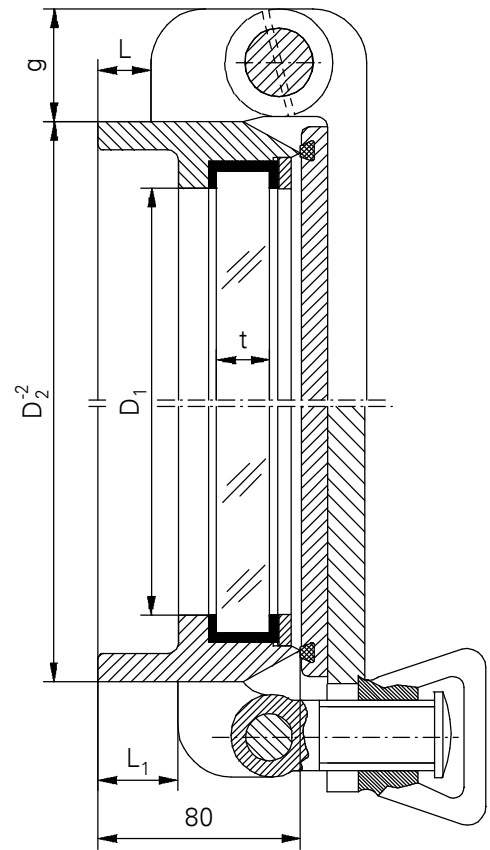
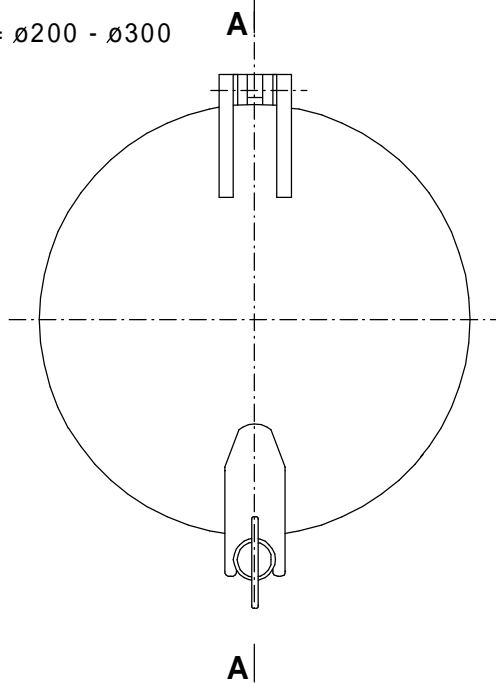


**HOLE IN SHIPS
 STEEL WALL**



A - A

TYPE B $D_1 = \varnothing 200 - \varnothing 300$



D1	Mass(kg)	
	A	B
$\varnothing 200$	15	10
$\varnothing 250$	19	13
$\varnothing 300$	23	18
$\varnothing 350$	28	23
$\varnothing 400$	34	31



LUBMOR Ltd.

ul. Wieleńska 1, 64-980 Trzcianka
 tel. +48/67/216-22-44
 fax +48/67/216-59-40
 e-mail: marketing@lubmor.pl
 e-mail: konstrukcja@lubmor.pl

**SIDE SCUTTLE
 Model NW**

**KI 24-99
 30-600**

SIDE SCUTTLE - Model NW

Nominal size D ₁	D ₂	g	t		L	L ₁
			A	B		
200	255	40	10	8	30	30
250	305		12	8		
300	360	44	15	10	24	30
350	410		15	12		
400	460		19	12		

APPROPRIATION

The side scuttles are designed for using on the water ships.

EXECUTION

The side scuttle is executed acc. to standards PN-81/W-88050 and ISO 1751 : 1993 (E) and Lubmor's drawings.

The good is made of steel frame, cover, pressure ring and hardened glass pane. This glass pane is fixed at the frame by means of a silicone gasket and pressure ring. A silicone gasket is also between a frame and the cover. Side scuttles cover is fixed on 2 or 3 pressure points. Side scuttle steel elements are protected against corrosion with epoxy primer. The place under silicone gasket is protected with painting set consisting three covers of epoxy paint total thick 100 µm.

DELIVERY RANG

Delivery set includes a complete, assembled side scuttle .

PACKING, TRANSPORT, STORAGE

The glass pane is protected with foil. This foil is removed after mounting of the side scuttle on the ship.

The goods are delivered without packing on the pallets. They should be transported by dry, clean and lidded trucks in order to avoid of dislocation, mechanical damages and the agents which might to cause the gaskets damages.

The side scuttles should be stored in closed accommodations where are the same conditions as in transport.

The pallets musn't be heaped hight.

DIVISION, MARKING

Types :

A - heavy

B - normal

Kinds varieties :

N - non opened

W - with stable frame for welding

Three serial number indicate a kind of material of separate window elements successively as below :

- material of stable frame
- material of moving frame
- material of cover

Numeral equivalents of materials :

0 - element isn't included at the side scuttle

1 - brass

2 - steel

3 - aluminium

Kinds of glass pane :

Y1 - transparent glass pane made of polished or float glass

Y2 - one - side matt glass pane made of polished or float glass

EXAMPLE OF DESIGNATION

Side scuttle nominal size D₁ = 400 mm, heavy type A, non opened , with stable steel frame for welding , steel cover and transparent pane made of float glass .

SIDE SCUTTLE A 400 NW 202 Y1 acc. to information card no KI 24-99/30-600.

This catalogue card correspond with drawing no N 24-99/30-600.