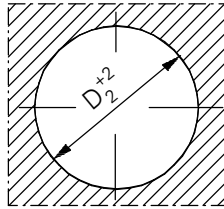
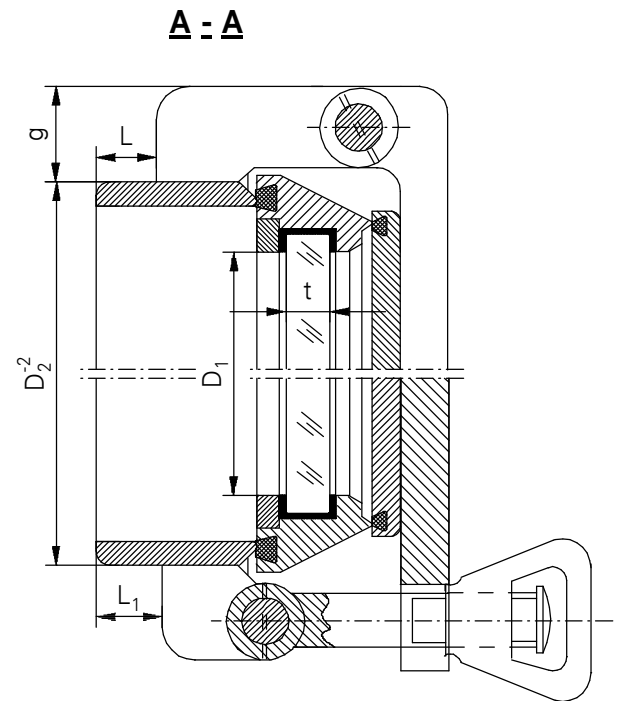
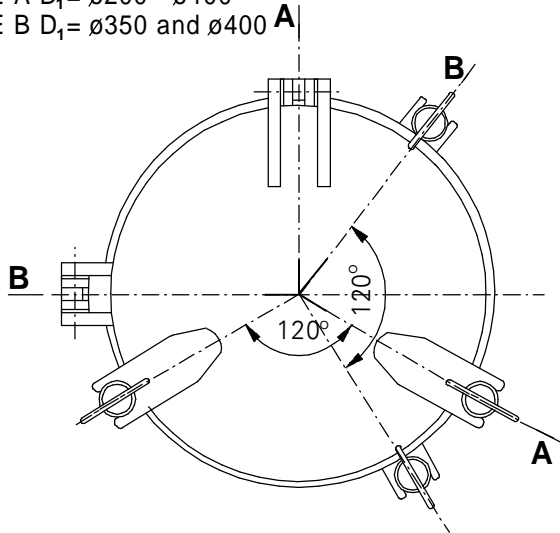


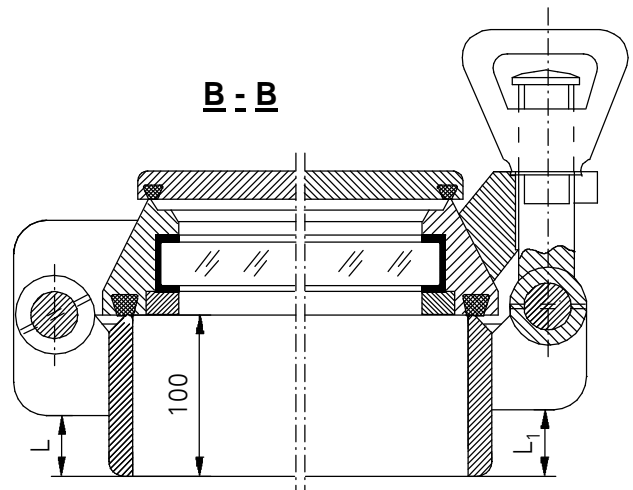
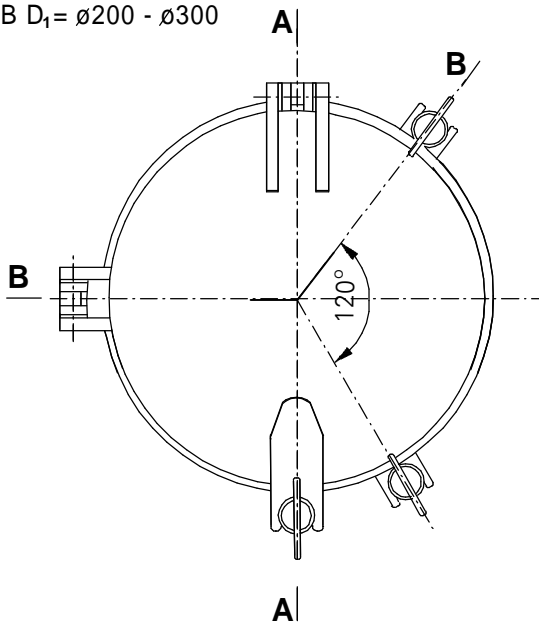
**HOLE IN SHIPS
STEEL WALL**



TYPE A $D_1 = \varnothing 200 - \varnothing 400$
TYPE B $D_1 = \varnothing 350$ and $\varnothing 400$



TYPE B $D_1 = \varnothing 200 - \varnothing 300$



D1	Mass(kg)	
	A	B
ø200	20	15
ø250	22	18
ø300	26	23
ø350	34	29
ø400	41	35



LUBMOR Ltd.

ul. Wieleńska 1, 64-980 Trzcianka
tel. +48/67/216-22-44
fax +48/67/216-59-40
e-mail: marketing@lubmor.pl
e-mail: konstrukcja@lubmor.pl

SIDE SCUTTLE

**KI 24-99
30-700**

SIDE SCUTTLE

Nominal size D ₁	D ₂	g	t	
			A	B
200	255	40	10	8
250	305		12	8
300	360	44	15	10
350	410		15	12
400	460		19	12

APPROPRIATION

The side scuttles are designed for using on the water ships.

EXECUTION

The side scuttle is executed acc. to standards PN-81/W-88050 and ISO 1751 : 1993 (E) and Lubmor's drawings.

The good is made of stable steel frame, cover, moving frame, pressure ring and hardened glass pane. This glass pane is fixed at the frame by means of a silicone gasket and pressure ring. A silicone gasket is mounted between the moving and the stable frames and also between the moving frame and the cover. The moving frame is fixed on 3 pressure points but cover on 2 or 3 ones. Steel elements are protected against corrosion with epoxy primer.

DELIVERY RANG

Delivery set includes a complete, assembled side scuttle .

PACKING, TRANSPORT, STORAGE

The glass pane is protected with foil. This foil is removed after mounting of the side scuttle on the ship.

The goods are delivered without packing on the pallets. They should be transported by dry, clean and lidded trucks in order to avoid of dislocation, mechanical damages and the agents which might to cause the gaskets damages.

The side scuttles should be stored in closed accommodations where are the same conditions as in transport.

The pallets musn't be heaped hight.

DIVISION, MARKING

Types :

A - heavy

B - normal

Kinds varieties :

L - with moving frame opened on the left and cover opened upwards

R - with moving frame opened on the right and cover opened upwards

LR - without cover

W - with stable frame for welding

Three serial number indicate a kind of material of separate window elements successively as below :

- material of stable frame
- material of moving frame
- material of cover

Numeral equivalents of materials :

- 1 - brass
- 2 - steel
- 3 - aluminium

Kinds of glass pane :

Y1 - transparent glass pane made of polished or float glass

Y2 - one - side matt glass pane made of polished or float glass

EXAMPLE OF DESIGNATION

Side scuttle, nominal size D₁ = 400 mm, heavy type A, opened on the left and cover opened upwards , with stable frame for welding , steel cover, brass moving frame and transparent glass pane made of float glass.

SIDE SCUTTLE A 400 LW 212 Y1 acc. to information card no KI 24-99/30-700.

This catalogue card correspond with drawing no N 24-98/30-700.