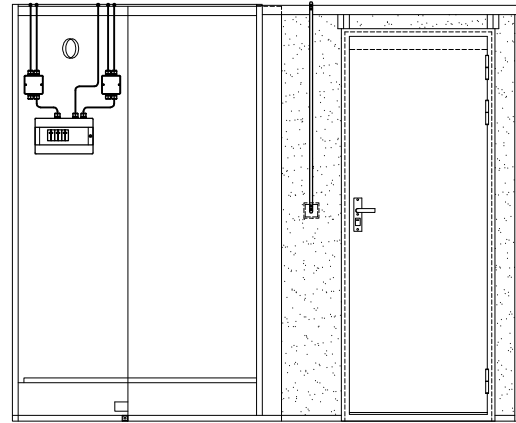
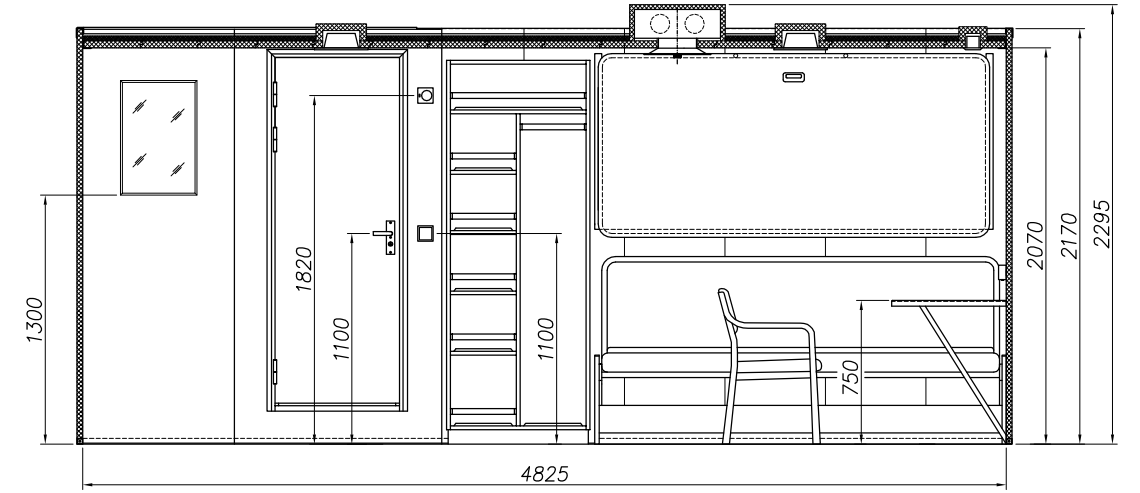




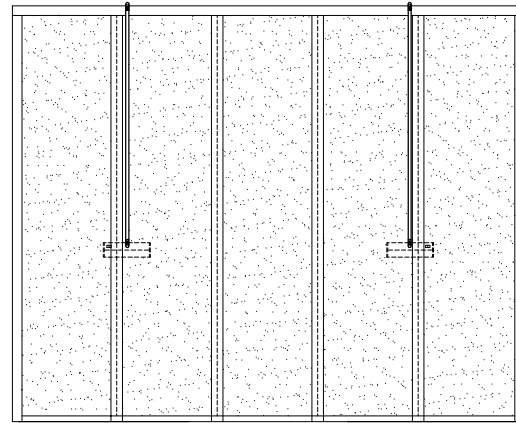
View "E"
1:20



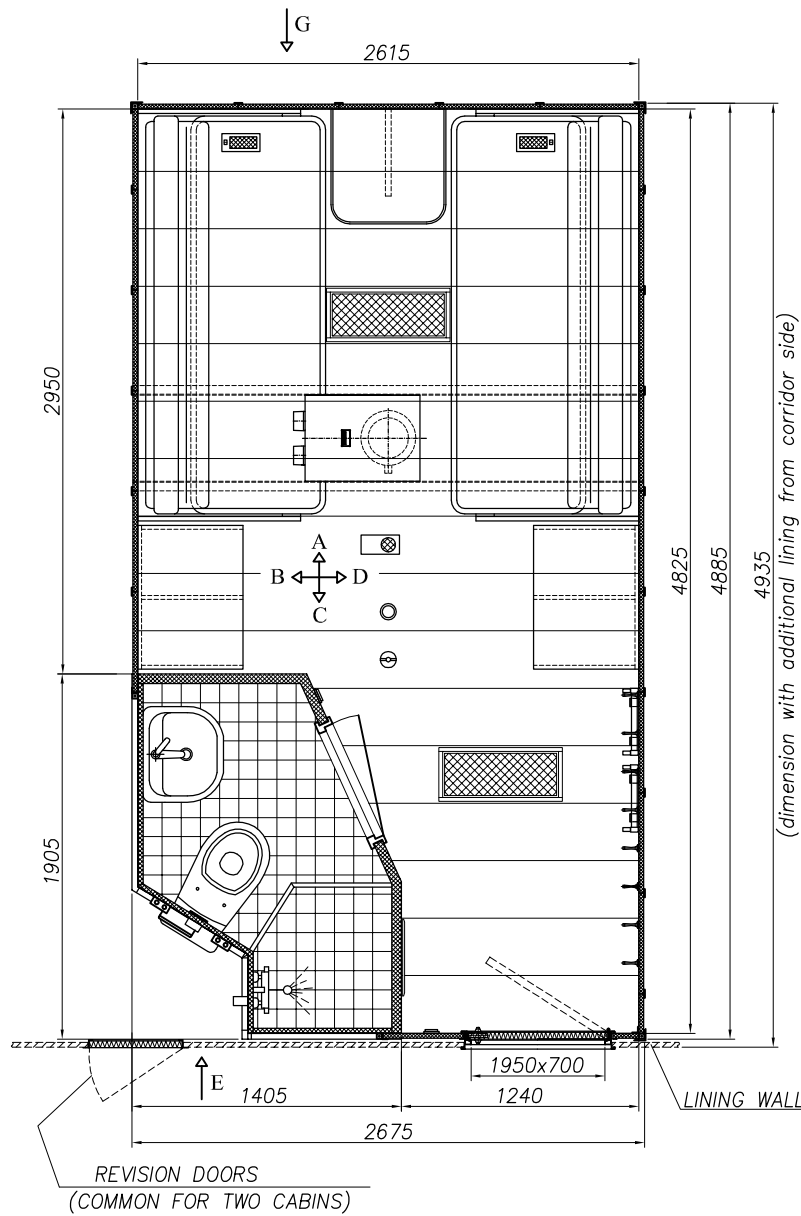
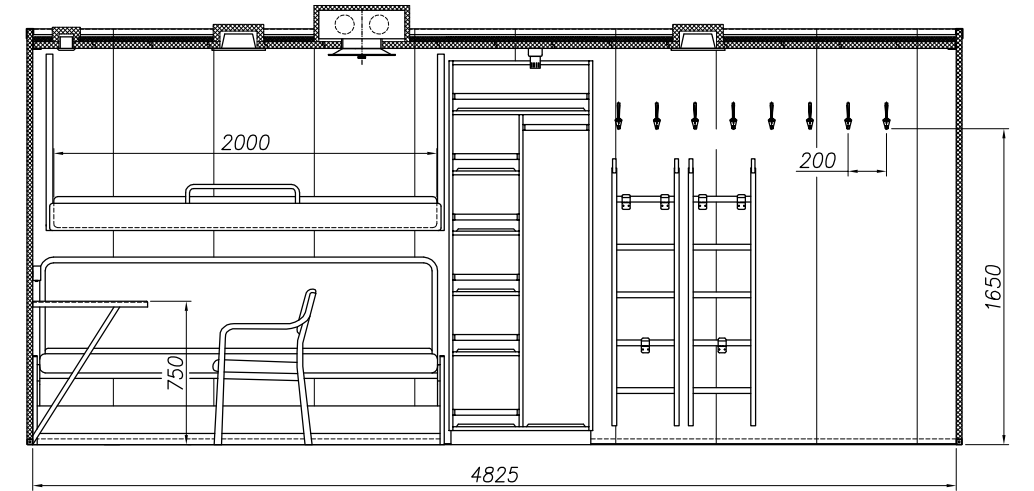
View "B"
1:20



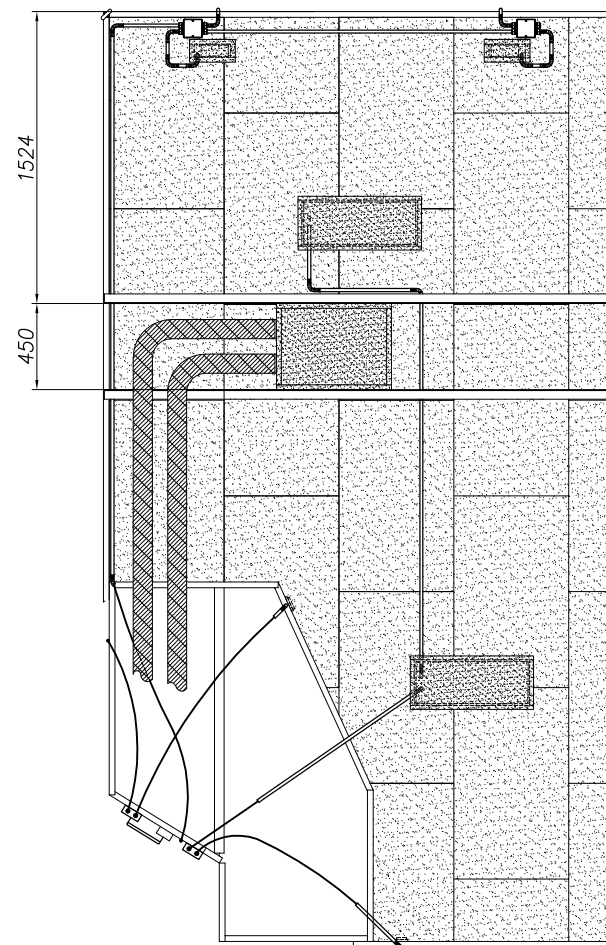
View "G"
1:20



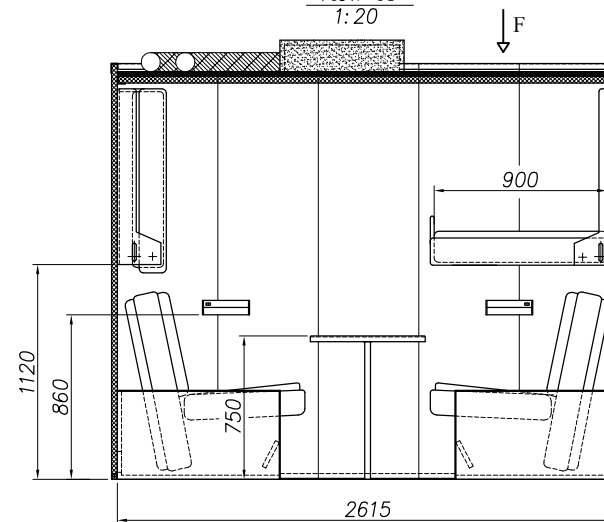
View "D"
1:20



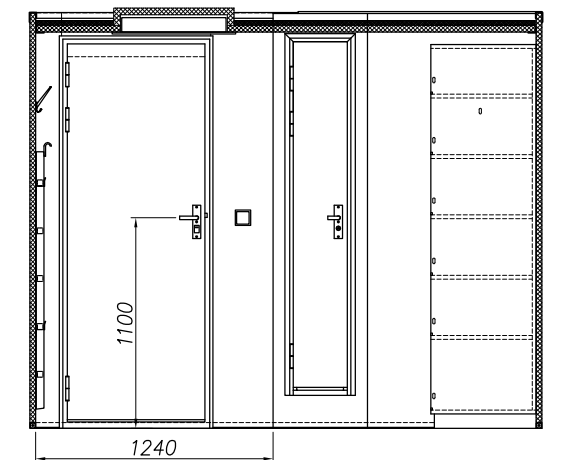
View "F"
1:20



View "A"
1:20



View "C"
1:20



Remark:

Shape, dimension of cabin and equipments – the example

Weight of the cabin with equipment:
~1700 kg



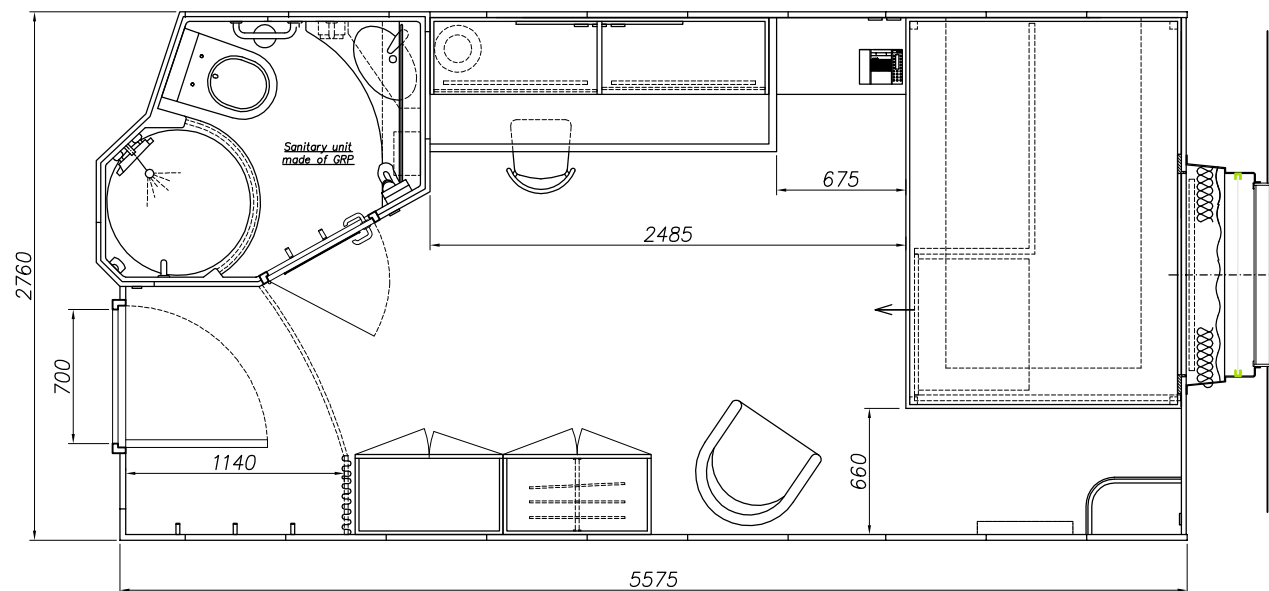
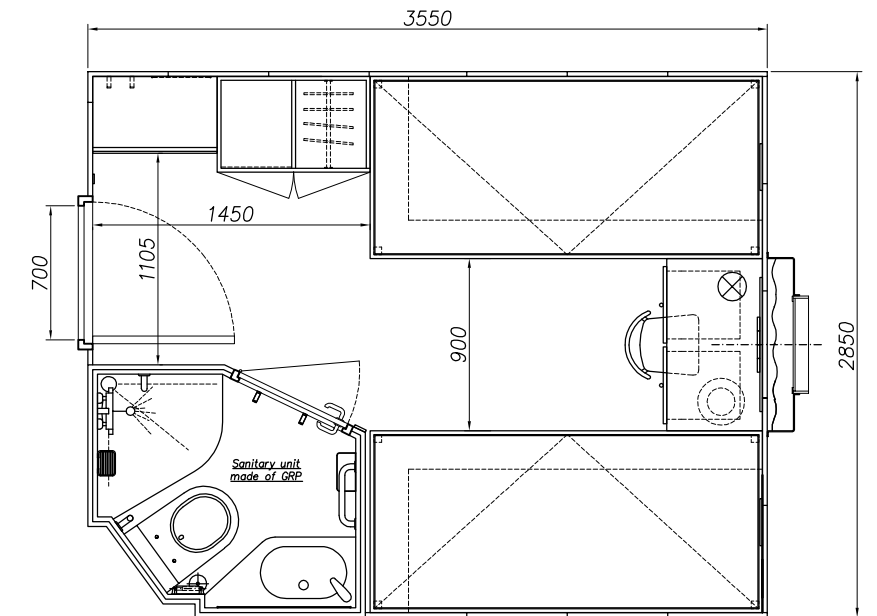
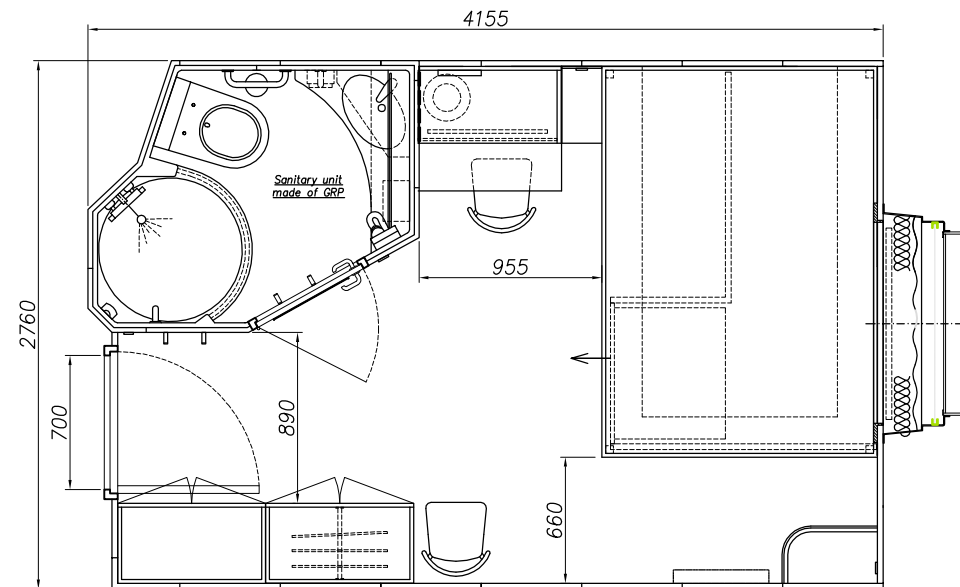
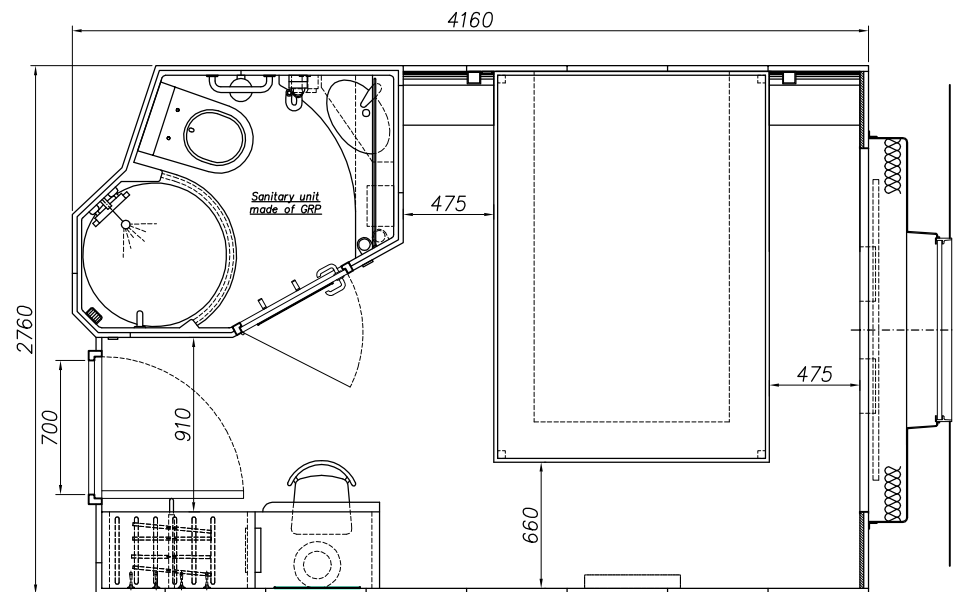
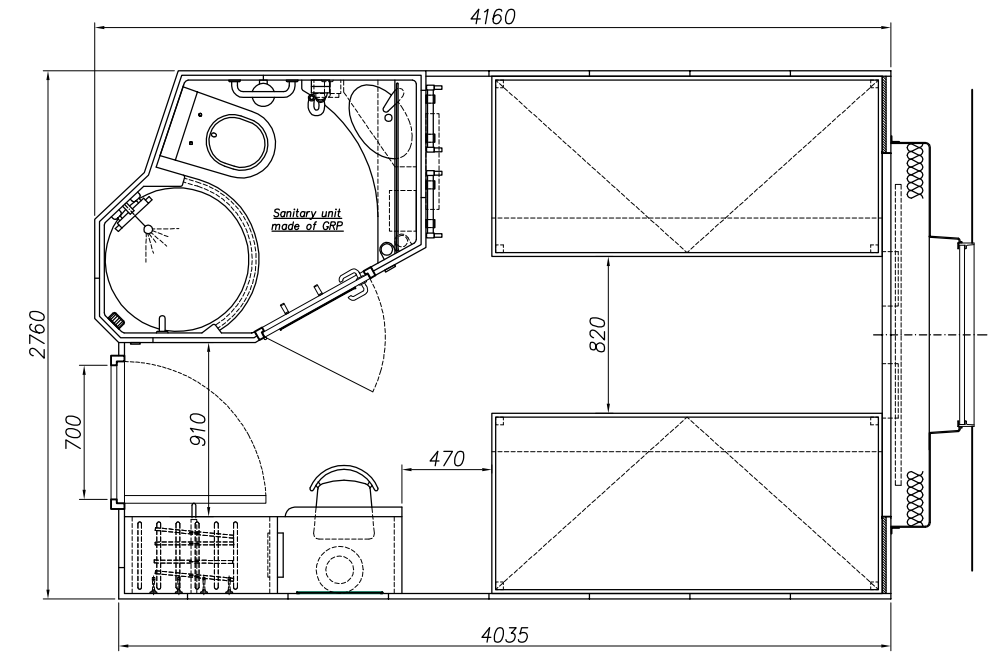
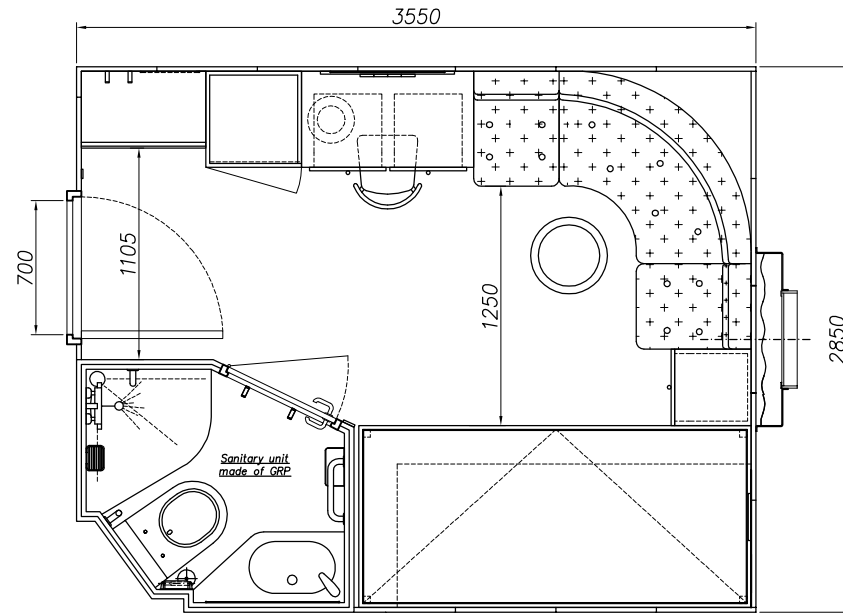
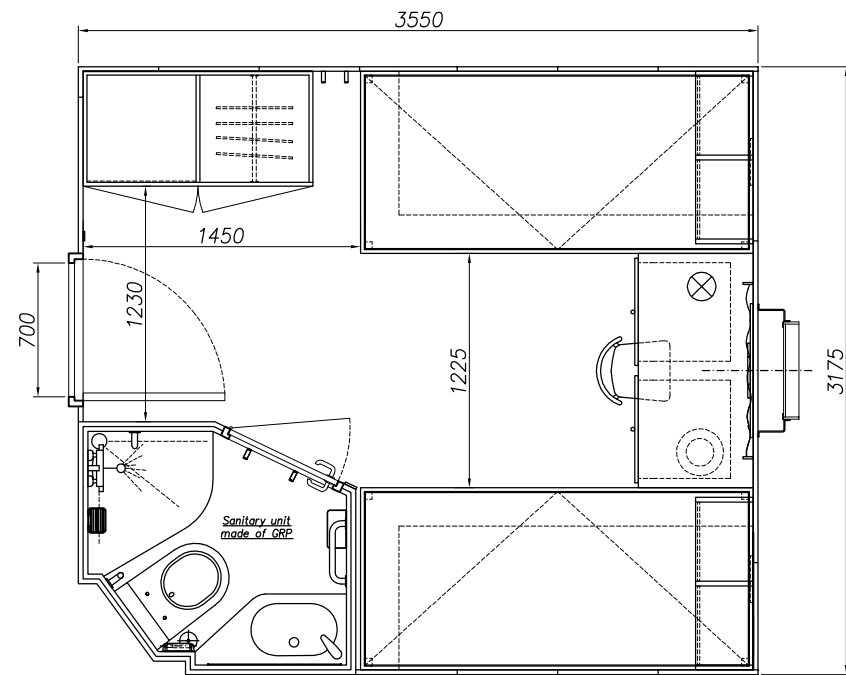
LUBMOR Ltd.

Wieleńska 1 Str. 64-980 Trzcianka
phone (067) 216-22-44
fax (067) 216-59-40
e-mail: lubmor@lubmor.pl
www.lubmor.pl

**MODULAR LIVING
CABIN**

**KK 24-15
32-000**

OTHER EXAMPLES OF ARRANGEMENT THE LIVING CABINS



Remark:
Shape, dimension of cabin and
equipments – the example



LUBMOR Ltd.

Wieleńska 1 Str. 64-980 Trzcianka
phone (067) 216-22-44
fax (067) 216-59-40
e-mail: lubmor@lubmor.pl
www.lubmor.pl

MODULAR LIVING
CABIN

KK 24-15
32-000

MODULAR LIVING CABIN

APPROPRATION

Modular living cabin is designed for quick and easy installation of living accommodations for crew and passengers. It can be used for building of ships, hotels placed on water, offshores etc.

EXECUTION

Modular living cabin is made as single section which consists: four walls, ceiling, sanitary unit and door. Modular cabin passess a full water-sanitary, electric and ventilation systems etc. These systems are connected to main system on ship after placing of cabin onboard. Modular living cabin is equipped with set of furniture fixed to the walls.

This cabin is made acc. to fire-proof and acoustic requirements.

DELIVERY RANG

Delivery set includes:

- full equipped cabin acc. to requirements of customer

or

- elements of modular cabin together with equipment for installation at the shipyard before its placing onboard,

A comprehensive delivery on the ship may also include:

- wall panels with inspection doors suitable for shuttering of cabin from corridor side,
- ceiling panels of corridor,
- shuttering systems for untypical cabins, wheelhouse, stairs and other accommodations.

PACKING, TRANSPORT, STORAGE

Modular living cabin is protected for transport and different weather conditions. All external surfaces covered of decotative PCV foil (i.e. door-leaf) are additionally protected with hardboard.

Modular living cabin is suitable for horizontal transport on deck by using special transport carriages. It can be transported vertically on the pallet or by means of transport eyes.

Modular cabin can be transported to the shipyard as whole assembled or in elements from each is installed near the ship.

DIVISION, MARKING AND FINISHING

Kind, shape, colouring and rang of the equipment is agreed every time after receiving an order.



LUBMOR

LUBMOR Ltd.

Wieleńska 1 Str. 64-980 Trzcianka

phone (067) 216-22-44

fax (067) 216-59-40

e-mail: lubmor@lubmor.pl

www.lubmor.pl

MODULAR LIVING
CABIN

KK 24-15
32-000