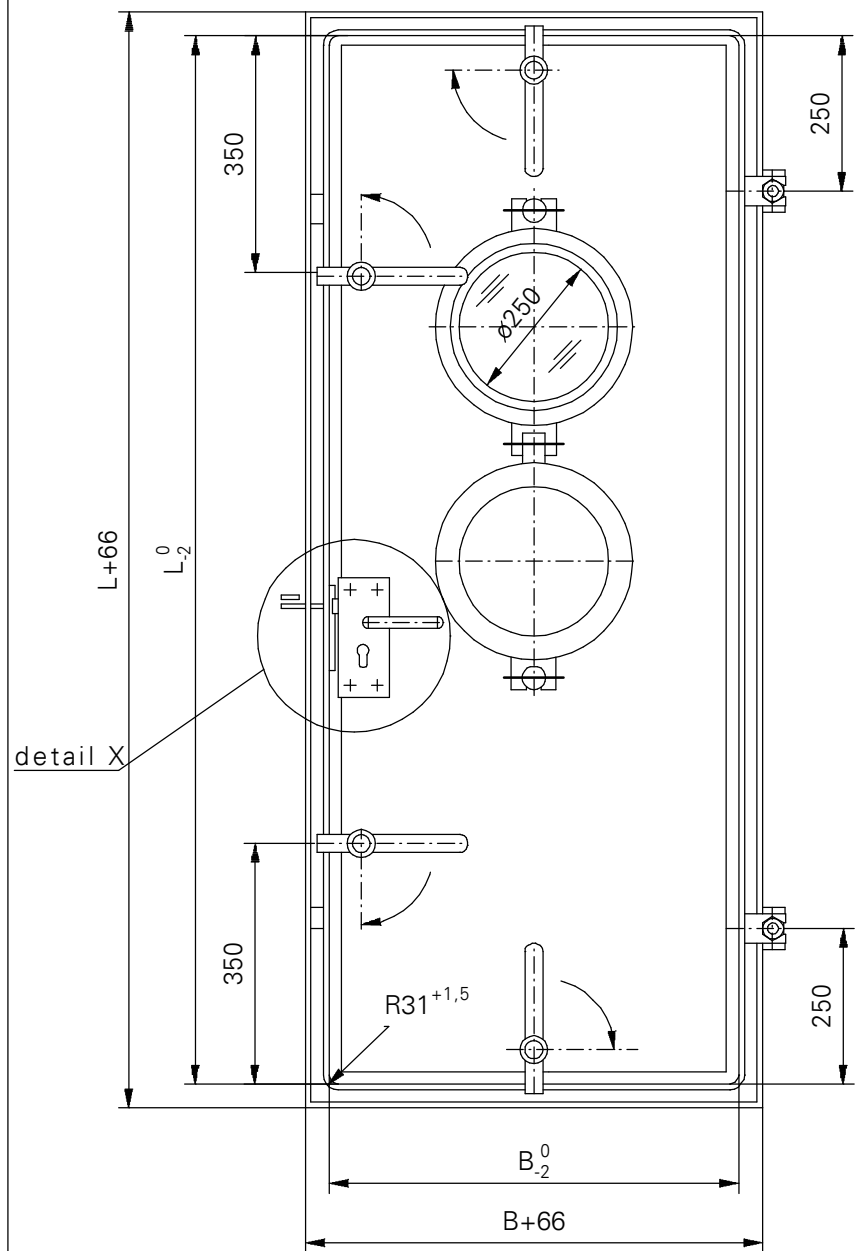
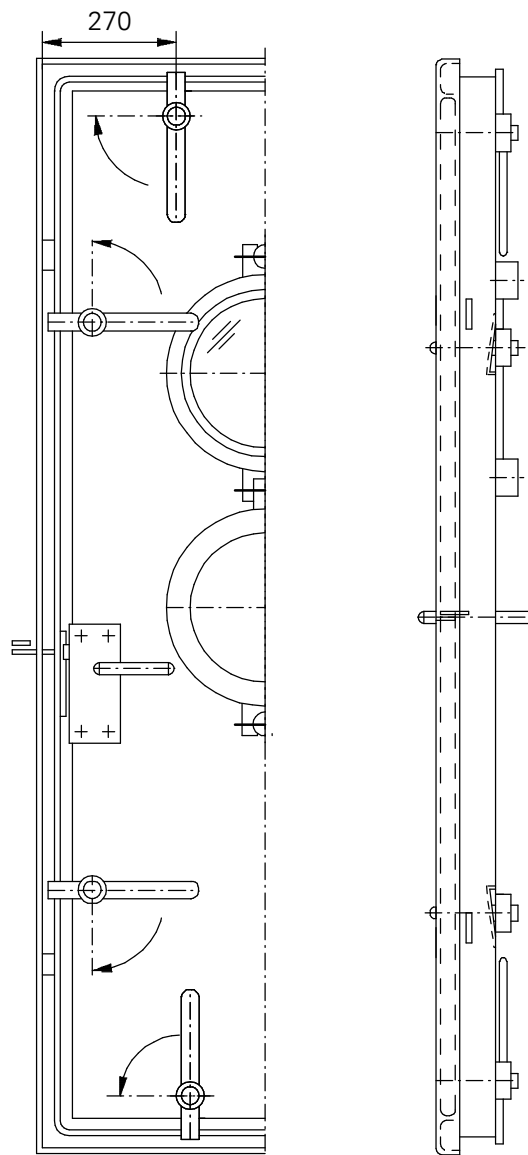


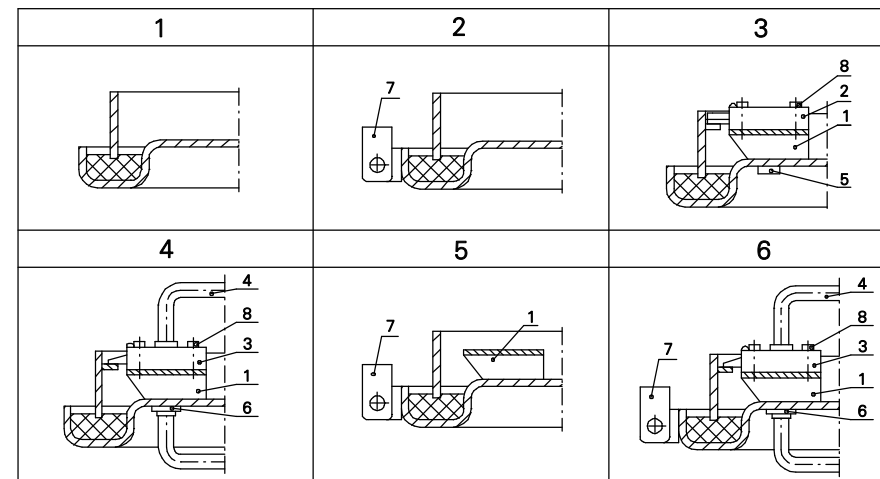
**B<900-4 WEDGE CLOSURES**



**B=900-6 WEDGE CLOSURES**

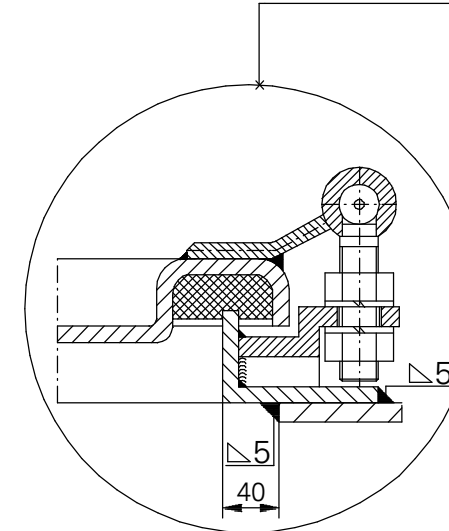


**KIND OF THE EQUIPMENT ACC.TO DETAIL X**

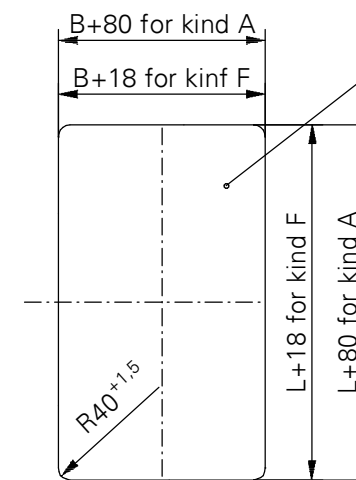


Item no	Name, standard marking
1	Bracket for lock
2	Bolt rim lock 3240Z-100228-left hand door-Schwepper Bolt rim lock 3240Z-100227-right hand door
3	Catch-bolt rim lock 3827Z-109159-left hand door-Schwepper Catch-bolt rim lock 3827Z-109161-right hand door
4	Handles set 2210-110817-Schwepper
5	Cylinder cover 4577 ZK-Schwepper
6	Escutcheon 6645/Z/2/75-Schwepper
7	Closure for padlock
8	Cylindrical bolt with hexagon seat DIN 127

**DOOR-FRAME KIND A  
L75x50x7**

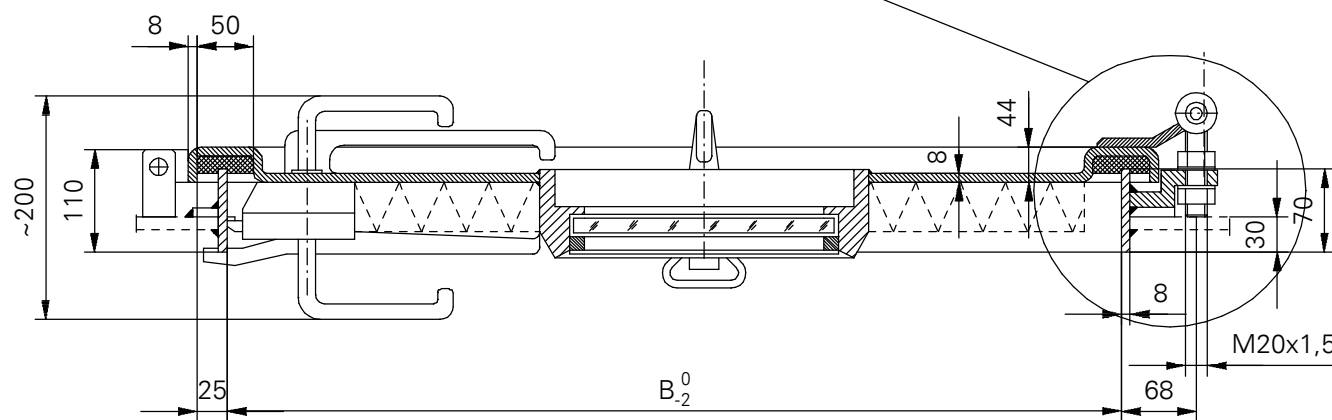


**HOLE IN BULKHEAD**



Projekt 15.05.2003r.

**DOOR-FRAME KIND F  
-70x8**



L \ B	600	750	900
	Mass (kg)		
1200	100	120	140
1400	113	136	153
1600	125	151	165



**LUBMOR Ltd.**

ul. Wieleńska 1, 64-980 Trzcianka  
tel. +48/67/216-22-44  
fax +48/67/216-59-40  
e-mail: marketing@lubmor.pl  
e-mail: konstrukcja@lubmor.pl

**WEATHERTIGHT SINGLE-LEAF  
STEEL DOOR**

**KK 24-01  
34-920/A**

# WEATERTIGHT SINGLE – LEAF STEEL DOOR

## GENERAL PROVISIONS

Doors are constructed and made on the base of regulations and standards as below :

- Ships and marine technology – Weathertight single-leaf steel door ISO 6042 : 1998,
- International standard – Ships and marine technology – single-leaf external door – clear opening PN-ISO 3796-1996,
- Ship tight door – clear opening BN-78/3712-17,
- Stream – tight single-leaf steel door BN-80/3712-17.01
- Heavy hinged doors for ships – DIN 83100

## APPROPRATION

The doors are mainly suitable for mounting in steel bulkheads of ship.

## EXECUTION

Door-leaf construction ensures a full stiffness by pressing of flange.

There is used an individual shutting and the hinges with regulated gap on the door opposite side to the hinges.

The elements which are exposed to a friction (pins, sleeves) are made of stainless steel. In case if the doors are made with porthole, the hardened glass thick. 12 mm is used.

## DELIVERY RANG

Delivery comprises a set with fittings acc. to specification as below.

## DIVISION, MARKING AND FINISHING

Varieties :

L - left – hand door as shown on drawing

R - right – hand as reflected

Kinds :

- without porthole (no marked)

P - with porthole Ø 250

Kinds of door – frames :

F - shape of door – frame – flat bar 70 x 8

A - shape of door – frame – angle bar 75 x50 x 7

Kind of the equipment acc. to detail X :

1 - without equipment

2 - closure for padlock

3 - bolt rim lock

4 - catch – bolt rim lock

5 - closure for padlock and bracket for lock

6 - closure for padlock and rim lock

Kind of door – leaves :

- non insulated – no marked

W - insulated

Finishing :

- door – leaf and door – frame painted twice of epoxy primer total thick. 40 µm. A channel under seal additional painted of thick - covered epoxy paint total thick. 120 µm – no marked

Zn - all the door hot galvanized of zinc coating thickness 25 µm

## EXAMPLE OF MARKING

Weathertight single leaf steel door size 1600 x 750, left – hand, without porthole Ø 250, door – frame of flat bar, catch – bolt rim lock, closure for padlock, door - leaf non insulated, painted.

**WEATHERTIGHT SINGLE – LEAF STEEL DOOR 1600 x 750 –R – P – F – 6 acc.to KK 24-01/34 –920/A.**

At the doors weights aren't included an additional equipment (lock, porthole).

This catalogue card corresponds with drawing no N24-00/34-920/A.