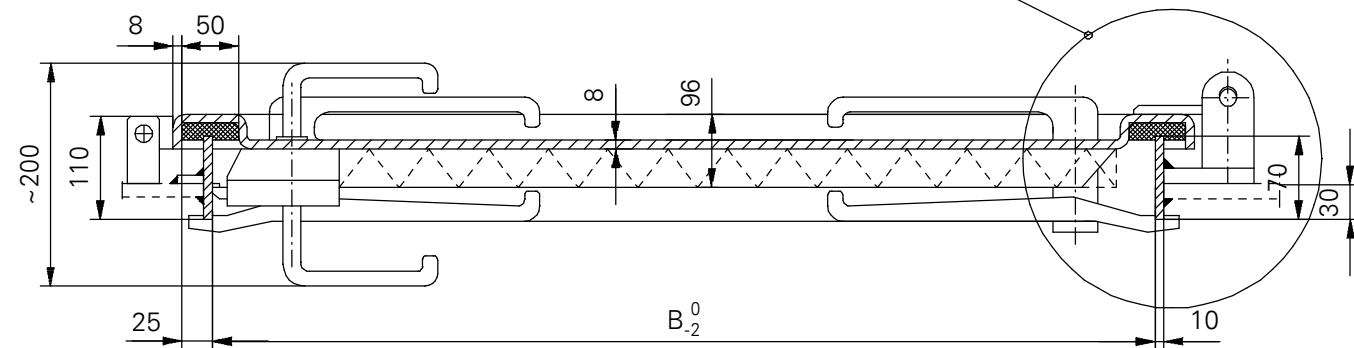


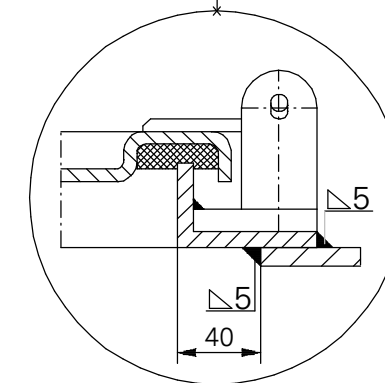
**KIND OF THE EQUIPMENT ACC.TO DETAIL X**

	1	2	3
	4	5	6
<b>Item no</b>	<b>Name, standard marking</b>		
1	Bracket for lock		
2	Bolt rim lock 3240Z-100228-left hand door-Schwepper Bolt rim lock 3240Z-100227-right hand door		
3	Catch-bolt rim lock 3827Z-109159-left hand door-Schwepper Catch-bolt rim lock 3827Z-109161-right hand door		
4	Handles set 2210-110817-Schwepper		
5	Cylinder cover 4577 ZK-Schwepper		
6	Escutcheon 6645/Z/2/75-Schwepper		
7	Closure for padlock		
8	Cylindrical bolt with hexagon seat DIN 127		

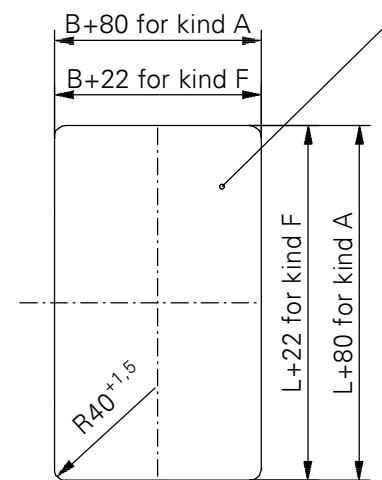
DOOR-FRAME KIND F  
-70x10



DOOR-FRAME KIND A  
L75x50x7




HOLE IN BULKHEAD



Projekt 15.05.2003r.

L x B	Nominal dimension	Mass [kg]
1329x659	1350x680	131
1329x809	1350x830	143
1359x579	1350x600	117
1459x659	1480x680	135
1599x659	1620x680	144
1659x659	1680x680	149



**LUBMOR**

**LUBMOR Ltd.**

ul. Wieleńska 1, 64-980 Trzcianka  
tel. +48/67/216-22-44  
fax +48/67/216-59-40  
e-mail: marketing@lubmor.pl  
e-mail: konstrukcja@lubmor.pl

**WEATHERTIGHT SINGLE-LEAF  
STEEL DOOR**

**KK 24-01  
34-920/B**

# WEATERTIGHT SINGLE – LEAF STEEL DOOR

## GENERAL PROVISIONS

Doors are constructed and made on the base of regulations and standards as below :

- Ships and marine technology – Weathertight single-leaf steel door ISO 6042 : 1998,
- International standard – Ships and marine technology – single-leaf external door – clear opening PN-ISO 3796-1996,
- Ship tight door – clear opening BN-78/3712-17,
- Stream – tight single-leaf steel door BN-80/3712-17.01
- Weathertight door acc.to NS 6090

## APPROPRATION

The doors are mainly suitable for mounting in steel or aluminium bulkheads of ship.

## EXECUTION

Door-leaf construction ensures a full stiffness by pressing of flange.

There is used an individual shutting.

The elements which are exposed to a friction (pins, sleeves) are made of stainless steel. In case if the doors are made with porthole, the hardened glass thick. 15 mm is used.

## DELIVERY RANG

Delivery comprises a set with fittings acc. to specification as below.

## DIVISION, MARKING AND FINISHING

Varieties :

L - left – hand door as shown on drawing

R - right – hand as reflected

Kinds :

- without porthole (no marked)

P - with porthole Ø 300

Kinds of door – frames :

F - shape of door – frame – flat bar 70 x 10

A - shape of door – frame – angle bar 75 x50 x 7

Kind of the equipment acc. to detail X :

1 - without equipment

2 - closure for padlock

3 - bolt rim lock

4 - catch – bolt rim lock

5 - closure for padlock and bracket for lock

6 - closure for padlock and rim lock

Kind of door – leaves :

- non insulated – no marked

W - insulated

Finishing :

- door – leaf and door – frame painted twice of epoxy primer total thick. 40 µm. A channel under seal is additional painted of thick - covered epoxy paint total thick. 120 µm – no marked

Zn - all the door hot galvanized of zinc cover thickness 25 µm

## EXAMPLE OF MARKING

Weathertight single leaf steel door size 1350 x 680, left – hand without porthole, door – frame of flat bar, catch – bolt rim lock, closure for padlock, door - leaf non insulated, painted.

WEATHERTIGHT SINGLE – LEAF STEEL DOOR 1350 x 680 – L – F – 6  
acc.to **KK 24-01/34 –920/B**.

At the doors weights aren't included an additional equipment (lock, porthole).

This catalogue card corresponds with drawing no N24-00/34-920/B.