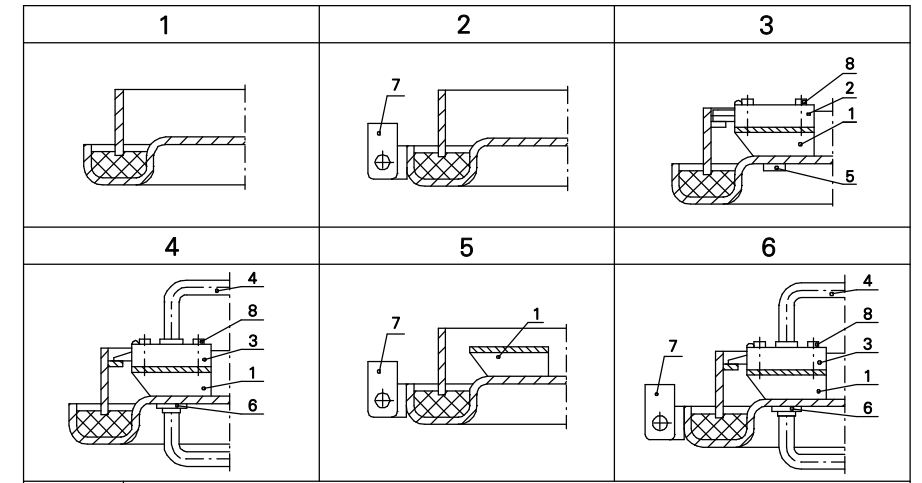
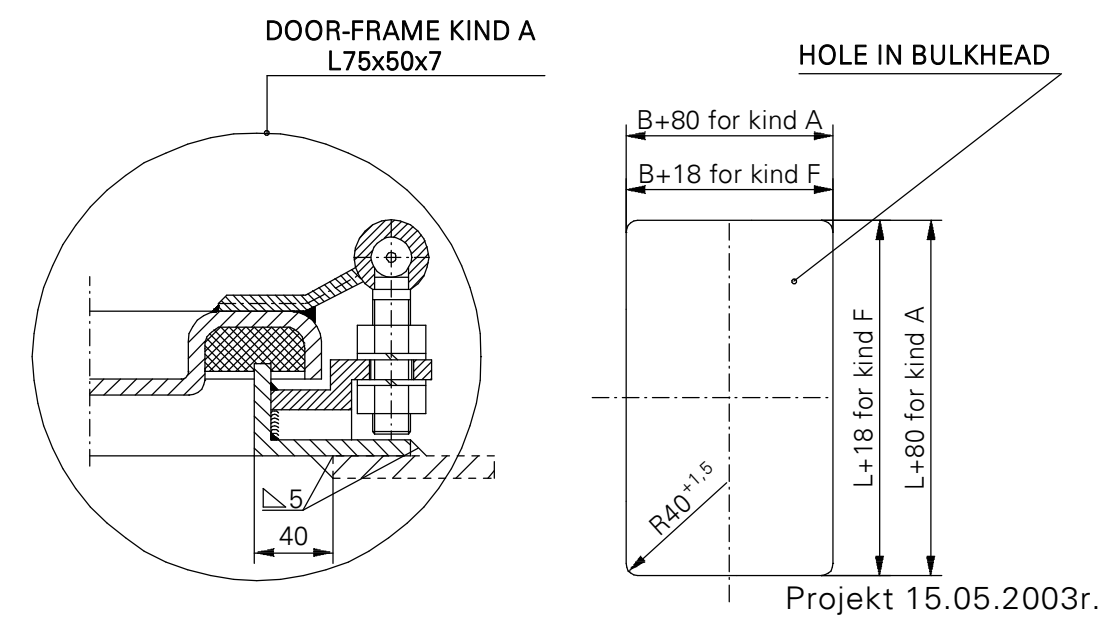


KIND OF THE EQUIPMENT ACC.TO DETAIL X



Item no	Name, standard marking
1	Bracket for lock
2	Bolt rim lock 3240Z-100228-left hand door-Schwepper Bolt rim lock 3240Z-100227-right hand door
3	Catch-bolt rim lock 3827Z-109159-left hand door-Schwepper Catch-bolt rim lock 3827Z-109161-right hand door
4	Handles set 2210-110817-Schwepper
5	Cylinder cover 4577 ZK-Schwepper
6	Escutcheon 6645/Z/2/75-Schwepper
7	Closure for padlock
8	Cylindrical bolt with hexagon seat DIN 127



L	B		
	600	750	900
	Mass (kg)		
1200	106		
1400	118	135	151
1600	130	156	169
1800	142	162	185



LUBMOR Ltd.

ul. Wieleńska 1, 64-980 Trzcianka
 tel. +48/67/216-22-44
 fax +48/67/216-59-40
 e-mail: marketing@lubmor.pl
 e-mail: konstrukcja@lubmor.pl

TIGHT EXTERNAL STEEL DOOR **KK 24-01**
34-922

TIGHT EXTERNAL STEEL DOOR

GENERAL PROVISIONS

- Doors are constructed and made on the base of regulations and standards as below :
- Ships and marine technology – Weathertight single – leaf steel door ISO 6042 : 1998
 - International standard – Ships and marine technology – single – leaf external door – clear opening PN – ISO 3796 : 1996
 - Ship tight door – clear opening BN – 78/3712 – 17
 - Stream – tight, single – leaf steel door BN – 80/3712 – 17.01
 - Heavy hinged doors for ships – DIN 83100.

APPROPRIATION

The doors are mainly suitable for mounting in steel or aluminium bulkheads of ship.

EXECUTION

Door – leaf construction ensures a full stiffness by pressing of flange.
There is used a central shutting and the hinges with regulated gap on the door opposite side to the hinges.
The elements which are exposed to a friction as : pins, sleeves, closures are made of stainless steel. In case if the doors are made with porthole, the hardened glass thick. 12 mm is used.

DELIVERY RANG

Delivery comprises a set with fittings acc. to specification as below .

DIVISION, MARKING AND FINISHING

Varieties :

- L - left – hand door as shown on drawing
- R - right – hand door as reflected

Kinds :

- without porthole – no marked
- P - with porthole Ø 200

Kinds of door – frames :

- F - shape of door – frame – flat bar 70 x 8
- A - shape of door frame – angle bar 75 x 50 x 7

Kind of the equipment acc. to detail x :

- 1 - without equipment
- 2 - closure for padlock
- 3 - bolt rim lock
- 4 - catch – bolt rim lock
- 5 - closure for padlock and bracket for lock
- 6 - closure for padlock and rim lock

Kind of door – leaf :

- non insulated – no marked
- W - insulated

Finishing :

- door – leaf and door – frame painted twice of epoxy primer total thick. 40 µm. A channel under seal is additionally painted of thick – covered epoxy paint total thick. 120 µm – no marked
- Zn - all the door hot galvanized of zinc coating thick. 25 µm

EXAMPLE OF MARKING

Tight external steel door, size 1600 x 750, left – hand, without porthole, door – frame of flat bar, catch – bolt lock, closure for padlock, door – leaf non insulated, painted.

TIGHT EXTERNAL STEEL DOOR 1600x 750 – R – A – 6 acc. to **KK24-01/34-922**.

At the doors weights aren't included an additional equipment (lock, porthole).

This catalogue card corresponds with drawing no N24-99/34-922.