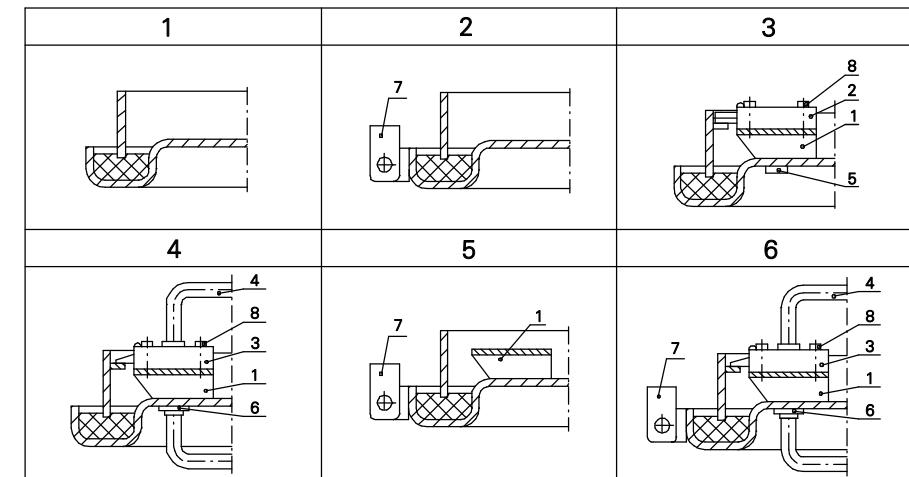
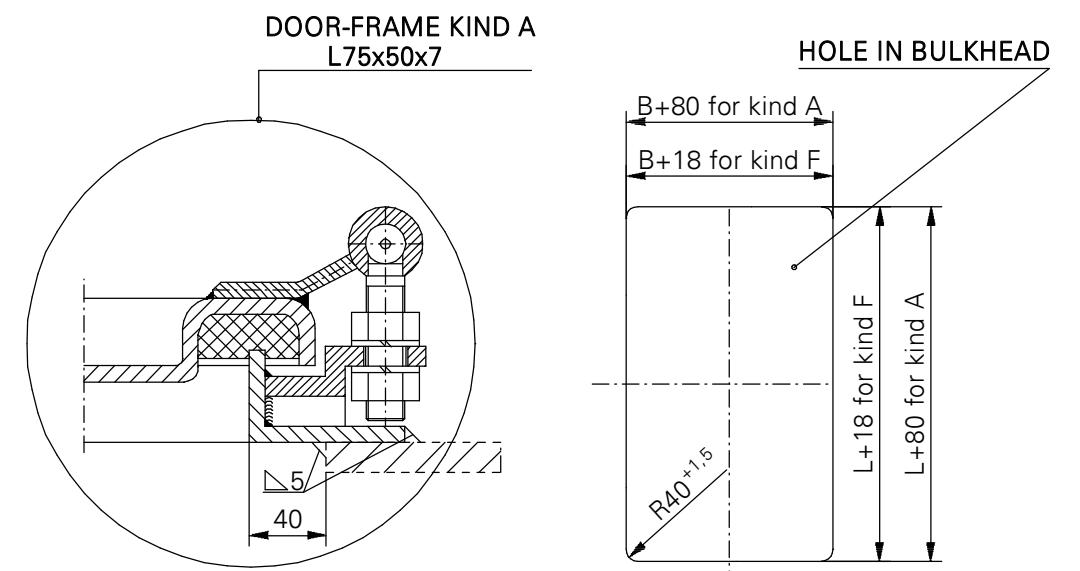
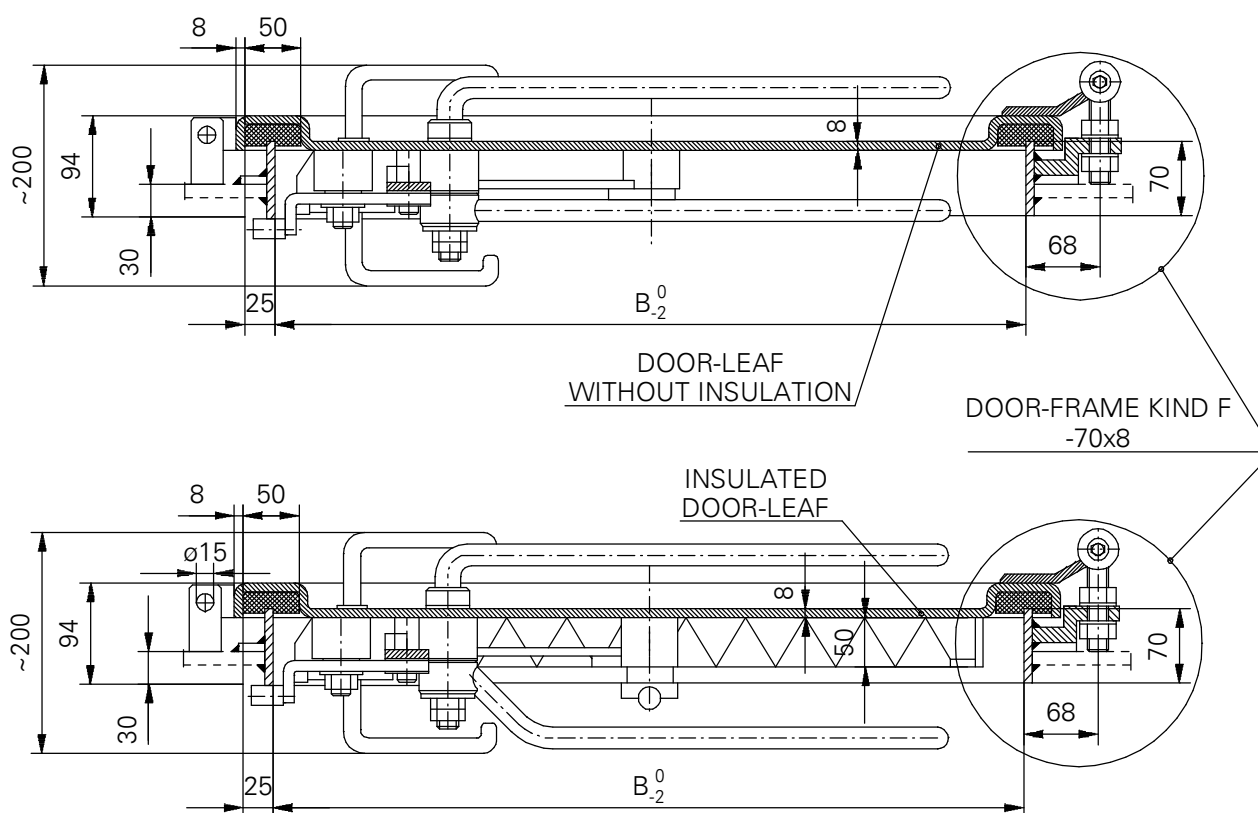


KIND OF THE EQUIPMENT ACC.TO DETAIL X



Item no	Name, standard marking
1	Bracket for lock
2	Bolt rim lock 3240Z-100228-left hand door-Schwepper Bolt rim lock 3240Z-100227-right hand door
3	Catch-bolt rim lock 3827Z-109159-left hand door-Schwepper Catch-bolt rim lock 3827Z-109161-right hand door
4	Handles set 2210-110817-Schwepper
5	Cylinder cover 4577 ZK-Schwepper
6	Escutcheon 6645/Z/2/75-Schwepper
7	Closure for padlock
8	Cylindrical bolt with hexagon seat DIN 127



Projekt 15.05.2003r.

L	B	750	900
	Mass (kg)		
1600		65	69
1800		72	78
2000		77	83



LUBMOR Ltd.

ul. Wieleńska 1, 64-980 Trzcianka
tel. +48/67/216-22-44
fax +48/67/216-59-40
e-mail: marketing@lubmor.pl
e-mail: konstrukcja@lubmor.pl

**TIGHT EXTERNAL
ALUMINIUM DOOR**

**KK 24-01
34-923**

TIGHT EXTERNAL ALUMINIUM DOOR

GENERAL PROVISIONS

Doors are constructed and made on the base of regulations and standards as below :

- Ships and marine technology – Weathertight single – leaf steel door acc.to ISO 6042 : 1998
- International standard – Ships and marine technology – single – leaf external door – clear opening acc.to PN – ISO 3796 : 1996
- Ship tight door – clear opening acc.to BN – 78/3712 – 17
- Stream – tight, single – leaf steel door acc.to BN – 80/3712 – 17.01
- Heavy hinged doors for ships acc.to DIN 83100.

APPROPRIATION

The door is mainly suitable for mounting in aluminium bulkheads of ship.

EXECUTION

Door – leaf construction ensures a full stiffness by pressing of flange.

There is used a central shutting of the door – leaf and the hinges with regulated gap on the door opposite side to the hinges.

The elements exposed to a friction (closures, pins, sleeves) are made of stainless steel. In case if the doors are made with window, the hardened glass thick. 12 mm is used.

DELIVERY RANG

Delivery comprises a set with fittings acc. to specification as below.

DIVISION, MARKING AND FINISHING

Varieties :

L - left – hand door as shown on drawing

R - right – hand door as reflected

Kinds :

- without window and porthole – no marked

P - with porthole Ø 200

O - with window (B-400) x 560

Kinds of door – frames :

F - shape of door – frame – flat bar 70 x 8

A - shape of door – frame – angle bar 75 x 50 x 7

Door – frame material :

- aluminium – no marked

St - steel

Kind of the equipment acc. to detail X :

1 - without equipment

2 - closure for padlock

3 - bolt rim lock

4 - catch – bolt rim lock

5 - closure for padlock and bracket for lock

6 - closure for padlock and catch – bolt rim lock

Kind of door – leaf :

- non insulated – no marked

W - insulated

Finishing :

- door – leaf and door – frame of aluminium - natural state – no marked

- steel door – frame – painted twice of epoxy primer of total thick. 40 µm – no marked

Zn - hot galvanized door – frame of zinc thick. 25 µm

EXAMPLE OF MARKING

Tight external aluminium door, size 1600 x 750 left – hand, with window, door – frame of steel flat bar, closure for padlock, catch – bolt lock, door – leaf non insulated .

TIGHT EXTERNAL ALUMINIUM DOOR 1600 x 750 - L - O - F - St - 6 acc. to catalogue card **KK24-01/34-923**.

At the doors weights aren't included an additional equipment (lock, porthole).

This catalogue card corresponds with drawing no N24-99/34-923.