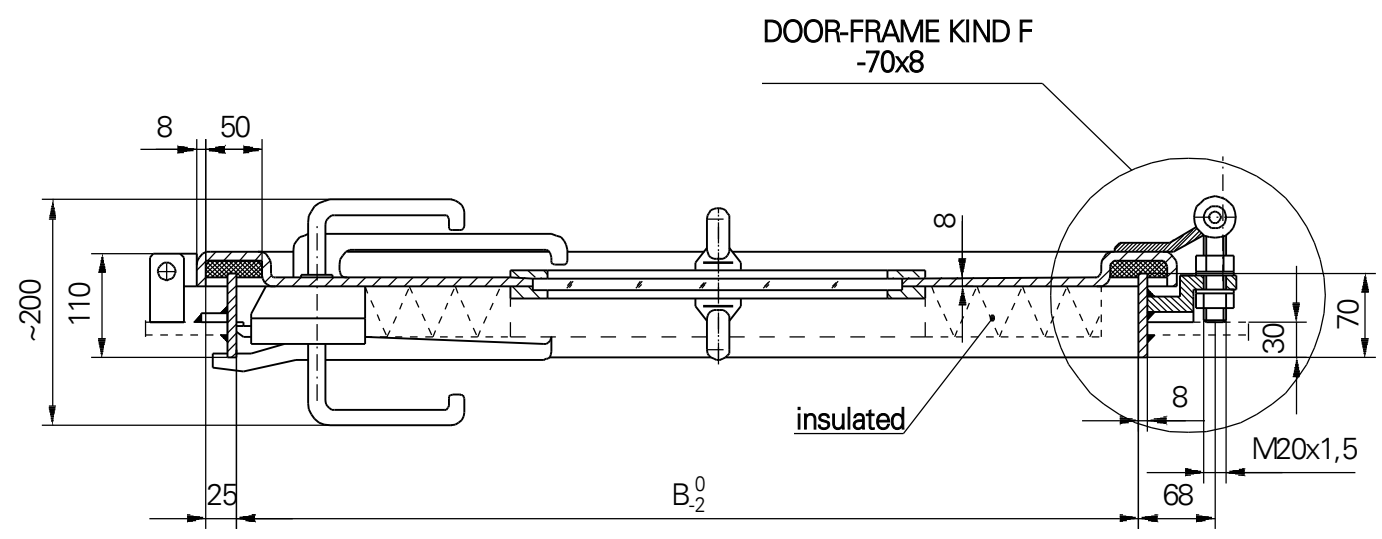
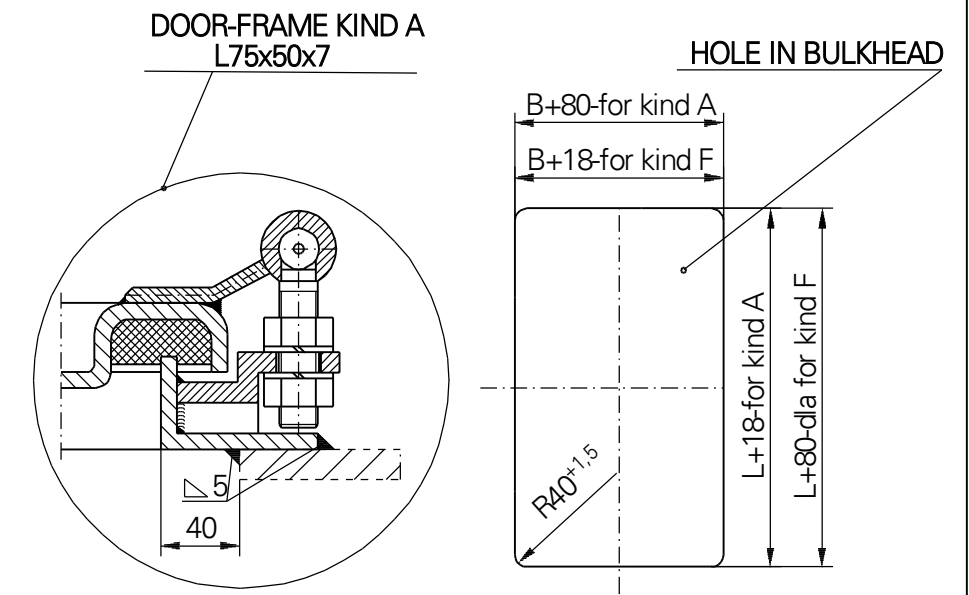


KIND OF THE EQUIPMENT

1	2	3																		
4	5	6																		
<table border="1" style="width: 100%; border-collapse: collapse;"> <thead> <tr> <th style="width: 10%;">Item no</th> <th style="width: 90%;">Name, standard marking</th> </tr> </thead> <tbody> <tr> <td style="text-align: center;">1</td> <td>Bracket for lock</td> </tr> <tr> <td style="text-align: center;">2</td> <td>Bolt rim lock 3240Z-100228-left hand door-Schwepper Bolt rim lock 3240Z-100227-right hand door</td> </tr> <tr> <td style="text-align: center;">3</td> <td>Catch-bolt rim lock 3827Z-109159-left hand door-Schwepper Catch-bolt rim lock 3827Z-109161-right hand door</td> </tr> <tr> <td style="text-align: center;">4</td> <td>Handles set 2210-110817-Schwepper</td> </tr> <tr> <td style="text-align: center;">5</td> <td>Cylinder cover 4577 ZK-Schwepper</td> </tr> <tr> <td style="text-align: center;">6</td> <td>Escutcheon 6645/Z/2/75-Schwepper</td> </tr> <tr> <td style="text-align: center;">7</td> <td>Closure for padlock</td> </tr> <tr> <td style="text-align: center;">8</td> <td>Cylindrical bolt with hexagon seat DIN 127</td> </tr> </tbody> </table>			Item no	Name, standard marking	1	Bracket for lock	2	Bolt rim lock 3240Z-100228-left hand door-Schwepper Bolt rim lock 3240Z-100227-right hand door	3	Catch-bolt rim lock 3827Z-109159-left hand door-Schwepper Catch-bolt rim lock 3827Z-109161-right hand door	4	Handles set 2210-110817-Schwepper	5	Cylinder cover 4577 ZK-Schwepper	6	Escutcheon 6645/Z/2/75-Schwepper	7	Closure for padlock	8	Cylindrical bolt with hexagon seat DIN 127
Item no	Name, standard marking																			
1	Bracket for lock																			
2	Bolt rim lock 3240Z-100228-left hand door-Schwepper Bolt rim lock 3240Z-100227-right hand door																			
3	Catch-bolt rim lock 3827Z-109159-left hand door-Schwepper Catch-bolt rim lock 3827Z-109161-right hand door																			
4	Handles set 2210-110817-Schwepper																			
5	Cylinder cover 4577 ZK-Schwepper																			
6	Escutcheon 6645/Z/2/75-Schwepper																			
7	Closure for padlock																			
8	Cylindrical bolt with hexagon seat DIN 127																			



B \ L	600	750	900	W
	Mass (kg)			
1600	62	72	85	370
1800	73	80	94	430
2000	81	88	103	430



LUBMOR Ltd.

ul. Wieleńska 1, 64-980 Trzcianka
 tel. +48/67/216-22-44
 fax +48/67/216-59-40
 e-mail: lubmor@lubmor.pl
 www.lubmor.pl

WEATHERTIGHT SINGLE-LEAF ALUMINIUM DOOR

**KK 24-05
34-925**

WEATHERTIGHT SINGLE-LEAF ALUMINIUM DOOR

GENERAL PROVISIONS

Doors are constructed and made on the base of regulations and standards as below :

- Ships and marine technology – Weathertight single – leaf steel door acc.to ISO 6042 : 1998
- International standard – Ships and marine technology – single – leaf external door – clear opening acc.to PN-ISO 3796-1996
- Ship tight door – clear opening acc.to BN – 78/3712 – 17
- Stream – tight, single – leaf steel door acc.to BN – 80/3712 – 17.01
- Weathertight door acc.to NS 6090.

APPROPRATION

The door is mainly suitable for mounting in aluminium and steel bulkheads of ship.

EXECUTION

Door – leaf construction ensures a full stiffness by pressing of flange.

There is used an individual shutting of the door – leaf and the hinges with regulated gap on the door opposite side to the hinges.

The elements exposed to a friction like (closures, pins, sleeves) are made of stainless steel. In case if the doors are made with window the hardened glass thick. 12 mm is used. The elements made of stainless steel cooperate with aluminium onces by means of brass sleeves pressed in aluminium bodies.

DELIVERY RANG

Delivery comprises a set with fittings acc. to specification as below.

DIVISION, MARKING AND FINISHING

Varieties :

L - left – hand door as shown on drawing

R - right – hand door as reflected

Kinds :

- without window – no marked

O - with window (B-300) x 560

Kinds of door – frames :

F - shape of door – frame – flat bar 70 x 8

A - shape of door – frame – angle bar 75 x 50 x 7

Door – frame material :

- aluminium – no marked

St - steel

Kind of the equipment acc. to detail X :

1 - without equipment

2 - closure for padlock

3 - bolt rim lock

4 - catch – bolt rim lock

5 - closure for padlock and bracket for lock

6 - closure for padlock and catch – bolt rim lock

Kind of door – leaf :

- non insulated – no marked

W - insulated

Finishing :

- door – leaf and door – frame of aluminium - natural state – no marked

- steel door – frame – painted twice of epoxy primer of total thick. 40 µm – no marked

Zn - hot galvanized door – frame of zinc thick. 25 µm

EXAMPLE OF MARKING

Weathertight single-leaf steel door, size 1600 x 750 left – hand with window, door – frame of steel flat bar, closure for padlock, catch – bolt lock, door – leaf non insulated .

WEATHERTIGHT SINGLE-LEAF STEEL DOOR 1600 x 750 - L - O - F - St - 6 acc. to catalogue card **KK24-05/34-925**.

At the doors weights aren't included an additional equipment (lock, porthole).

This catalogue card corresponds with drawing no N24-05/34-925 rev B