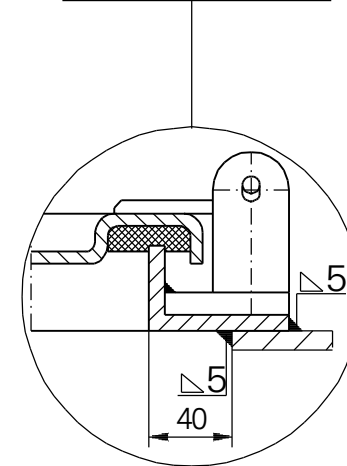


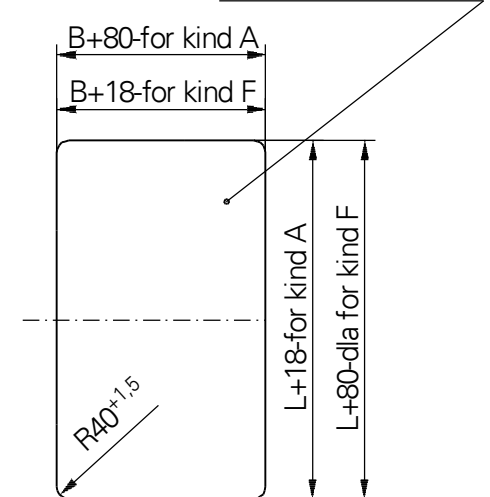
KIND OF THE EQUIPMENT

Item no	Name, standard marking
1	Bracket for lock
2	Bolt rim lock 3240Z-100228-left hand door-Schwepper Bolt rim lock 3240Z-100227-right hand door
3	Catch-bolt rim lock 3827Z-109159-left hand door-Schwepper Catch-bolt rim lock 3827Z-109161-right hand door
4	Handles set 2210-110817-Schwepper
5	Cylinder cover 4577 ZK-Schwepper
6	Escutcheon 6645/Z/2/75-Schwepper
7	Closure for padlock
8	Cylindrical bolt with hexagon seat DIN 127

DOOR FRAME KIND.A
L75x50x7



HOLE IN BULKHEAD



Nominal dimension	Dimension		Mass (kg)
	L	B	
1350 x 680	1329	659	89
1400 x 680	1379	659	94
1680 x 680	1659	659	108
1880 x 680	1859	659	118
1680 x 830	1659	809	121
1880 x 830	1859	809	134



LUBMOR Ltd.

ul. Wieleńska 1, 64-980 Trzcianka
tel. +48/67/216-22-44
fax +48/67/216-59-40
e-mail: lubmor@lubmor.pl
www.lubmor.pl

**SPRAY-TIGHT SINGLE-LEAF
ALUMINIUM DOOR**

**KK 24-05
34-927**

SPRAY-TIGHT SINGLE-LEAF ALUMINIUM DOOR

GENERAL PROVISIONS

- Doors are constructed and made on the base of regulations and standards as below :
- Ships and marine technology – Weathertight single – leaf steel door acc.to ISO 6042 : 1998
 - International standard – Ships and marine technology – single – leaf external door – clear opening acc.to PN – ISO 3796 : 1996
 - Ship tight door – clear opening acc.to BN – 78/3712 – 17
 - Spray – tight single – leaf steel door acc.to BN – 80/3712 – 17.04
 - Spray-tight door acc.to NS 6091.

APPROPRATION

The doors are mainly suitable for mounting in aluminium and steel bulkheads of ship.

EXECUTION

Door – leaf construction ensures a full stiffness by pressing of flange.

There is used an individual shutting of the door – leaf and the hinges with regulated gap on the door opposite side to the hinges.

The elements exposed to a friction (closures, pins, sleeves) are made of stainless steel. Stainless steel elements cooperate with aluminium ones by brass sleeves pressed in aluminium bodies.

DELIVERY RANG

Delivery comprises a set of fittings acc. to specification as below.

DIVISION, MARKING AND FINISHING

Varieties :

L - left – hand door as shown on drawing

R - right – hand door as reflected

Kinds :

- without window and porthole – without marking

P - with porthole \varnothing 250

O - with window 300x400

Kinds of door – frames :

F - shape of door – frame – flat bar 70 x 10

A - shape of door – frame – angle bar 75 x 50 x 7

Door – frame material :

- aluminium – no marked

St - steel

Kind of the equipment acc. to detail X :

1 - without equipment

2 - closure for padlock

3 - bolt rim lock

4 - catch – bolt rim lock

5 - closure for padlock and bracket for lock

6 - closure for padlock and catch – bolt rim lock

Kind of door – leaf :

- non insulated – no marked

W - insulated

Finishing :

- door – leaf and door – frame of aluminium - natural state – no marked

- steel door – frame – painted twice of epoxy primer total thick. 40 μ m – no marked

Zn - hot galvanized door – frame of zinc thick. 25 μ m

EXAMPLE OF MARKING

Spray-tight single-leaf aluminium door, size 1350 x 680 left – hand with window, door – frame of steel flat bar, closure for padlock, catch – bolt lock, door – leaf non insulated .

SPRAY-TIGHT SINGLE-LEAF ALUMINIUM DOOR 1350 x 680 - L – O - F - A - St - 6 acc. to catalogue card **KK24-01/34-927**.

At the doors weights aren't included an additional equipment (lock).

This catalogue card corresponds with drawing no N24-00/34-927 rev C