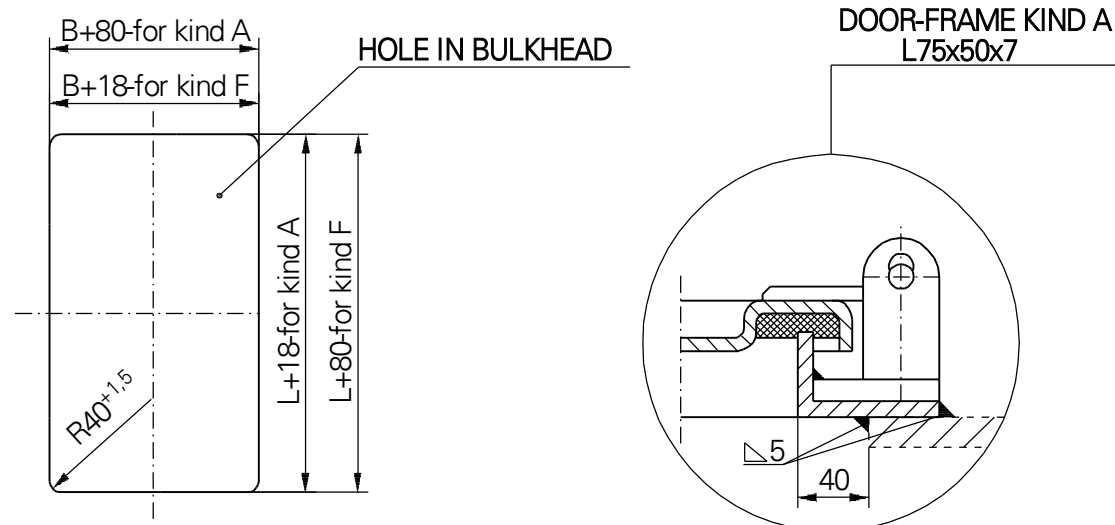
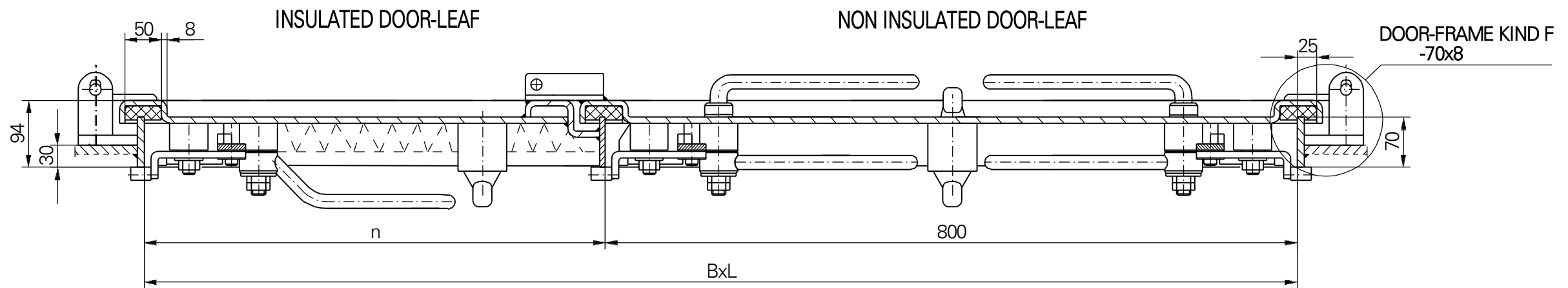


KIND OF THE EQUIPMENT

1	2	3
4	5	6
Item no	Name, standard marking	
1	Bracket for lock	
2	Bolt rim lock 3240Z-100228-left hand door-Schwepper Bolt rim lock 3240Z-100227-right hand door	
3	Catch-bolt rim lock 3827Z-109159-left hand door-Schwepper Catch-bolt rim lock 3827Z-109161-right hand door	
4	Handles set 2210-110817-Schwepper	
5	Cylinder cover 4577 ZK-Schwepper	
6	Escutcheon 6645/Z/2/75-Schwepper	
7	Closure for padlock	
8	Cylindrical bolt with hexagon seat DIN 127	



B \ L	1200	1400
1400	240	265
1600	265	285
1800	280	300



LUBMOR Ltd.

ul. Wieleńska 1, 64-980 Trzcianka
tel. +48/67/216-22-44
fax +48/67/216-59-40
e-mail: lubmor@lubmor.pl
www.lubmor.pl

**WEATHERTIGHT DOUBLE-LEAF
STEEL DOOR**

**KK 24-04
34-935**

WEATHERTIGHT DOUBLE-LEAF STEEL DOOR

GENERAL RESOLVES

The door was designed and is made acc. to BN-81/3712-17.02 – Ship double – leaf steel door.

APPROPRIATION OF THE GOOD

Double – leaf steel spray – tight door is designed for assembly mainly in steel wall of the ship.

EXECUTION OF THE GOOD

Door – leaf construction ensures a full stiffness by means pressed edges. There was used combined shutting of the door together with individual one. All elements exposed to a friction are made of stainless steel.

DELIVERY RANG

Delivery set comprises the door with complete fittings acc. to below specification.

DIVISION, MARKING AND FINISHING

Varieties:

R - right – hand as shown on drawing

L - left – hand as reflected

Kinds of door frame

F - door frame shape – flat bar 70x8

A - door frame – angle bar 75x50x7

Kind of the equipment acc. to detail X:

1 - without equipment

2 - closure for padlock

3 - bolt rim lock

4 - catch – bolt rim lock

5 - closure for padlock and bracket for lock

6 - closure for padlock and rim lock

Kinds of the door – leaves:

- non insulated – without marking

W - insulated door - leaf

Finishing:

- door – leaf and door – frame painted twice with prime epoxy paint of total thick 40 µm. Channel under gasket additionally painted with thick covered epoxy enamel of total thickness 120 µm – without marking.

Zn - all elements hot galvanized of zinc thickness 25 µm.

EXAMPLE OF MARKING

Weatheright double-leaf steel door c.o. LxB = 1400x1200 right hand, door – frame of flat bar, catch bolt rim lock, closure for padlock, non insulated door – leaf, painted.

WEATHERTIGHT DOUBLE-LEAF STEEL DOOR 1400x1200 – R – F – 6 acc. to catalogue card no **KK24 - 05/34 – 935**

At the weight isn't included additional equipment (lock, insulation)

This catalogue card corresponds with drawing N24 – 05/34 - 935