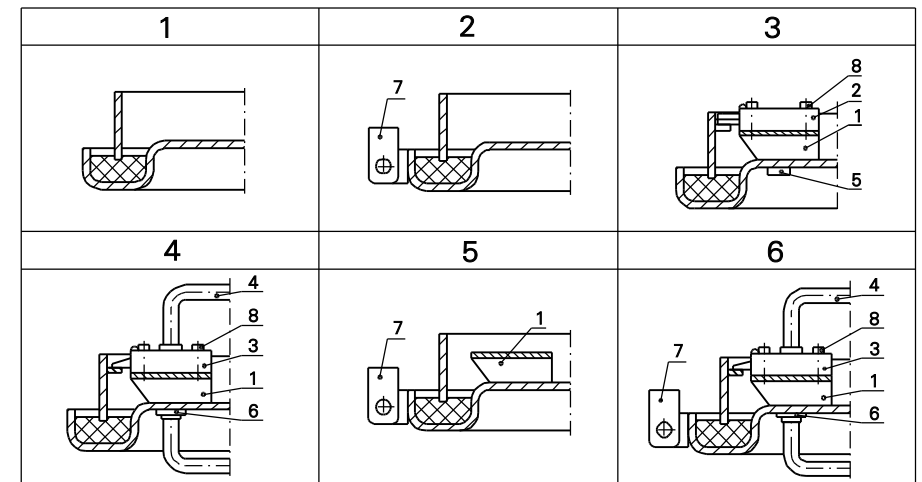


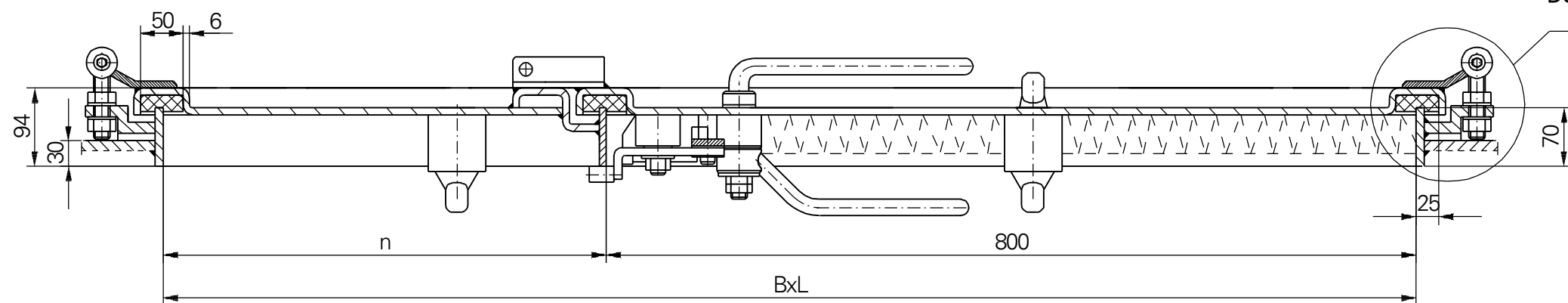
KIND OF THE EQUIPMENT



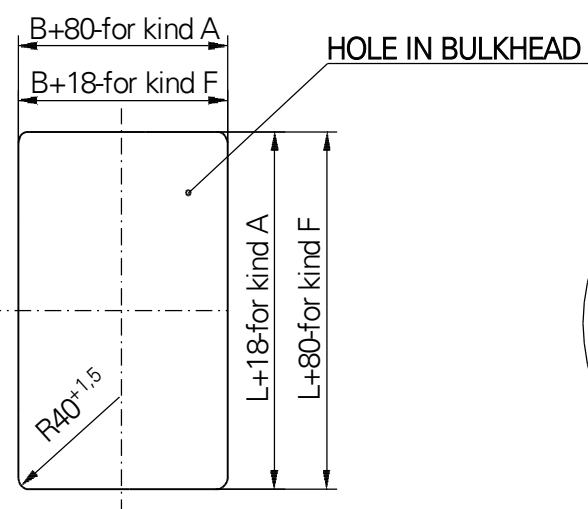
Item no	Name, standard marking
1	Bracket for lock
2	Bolt rim lock 3240Z-100228-left hand door-Schwepper Bolt rim lock 3240Z-100227-right hand door
3	Catch-bolt rim lock 3827Z-109159-left hand door-Schwepper Catch-bolt rim lock 3827Z-109161-right hand door
4	Handles set 2210-110817-Schwepper
5	Cylinder cover 4577 ZK-Schwepper
6	Escutcheon 6645/Z/2/75-Schwepper
7	Closure for padlock
8	Cylindrical bolt with hexagon seat DIN 127

NON INSULATED DOOR-LEAF

INSULATED DOOR-LEAF

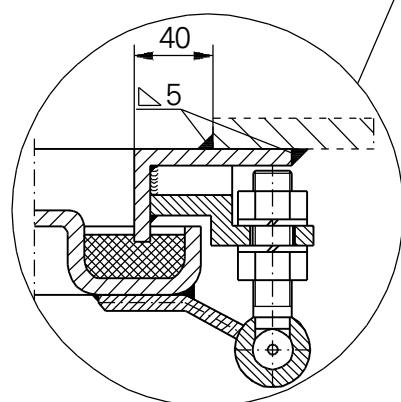


DOOR-FRAME KIND F
-70x8



HOLE IN BULKHEAD

DOOR-FRAME KIND A
L75x50x7



B	1200	1400	1500	1600
	Mass (kg)			
1400	195	210	215	230
1600	212	225	232	240
1700	220	235	242	250
1800	230	240	250	285



LUBMOR Ltd.

ul. Wieleńska 1, 64-980 Trzcianka
tel. +48/67/216-22-44
fax +48/67/216-59-40
e-mail: lubmor@lubmor.pl
www.lubmor.pl

**SPRAY-TIGHT DOUBLE-LEAF
STEEL DOOR**

**KK 24-04
34-941**

SPRAY-TIGHT DOUBLE-LEAF STEEL DOOR

GENERAL RESOLVES

The door was designed and is made acc. to DIN 83102 – Ship double – leaf steel door.

APPROPRIATION OF THE GOOD

Double – leaf steel spray – tight door is designed for assembly mainly in steel wall of the ship.

EXECUTION OF THE GOOD

Door – leaf construction ensures a full stiffness by means pressed edges. There was used combined shutting of the door together with individual one. All elements exposed to a friction are made of stainless steel.

DELIVERY RANG

Delivery set comprises the door with complete fittings acc. to below specification.

DIVISION, MARKING AND FINISHING

Varieties:

- R - right – hand as shown on drawing
- L - left – hand as reflected

Kinds:

- without porthole-without marking
- A - with porthole \varnothing 200

Kinds of door frame

- F - door frame shape – flat bar 70x8
- A - door frame – angle bar 75x50x7

Kind of the equipment acc. to detail X:

- 1 - without equipment
- 2 - closure for padlock
- 3 - bolt rim lock
- 4 - catch – bolt rim lock
- 5 - closure for padlock and bracket for lock
- 6 - closure for padlock and rim lock

Kinds of the door – leaves:

- non insulated – without marking
- W - insulated door - leaf

Finishing:

- door – leaf and door – frame painted twice with prime epoxy paint of total thick 40 μ m. Channel under gasket additionally painted with thick covered epoxy enamel of total thickness 120 μ m – without marking.
- Zn - all elements hot galvanized of zinc thickness 25 μ m.

EXAMPLE OF MARKING

Spray-tight double-leaf steel door c.o. LxB = 1800x1600 right hand, door – frame of flat bar, catch bolt rim lock, closure for padlock, non insulated door – leaf, painted.

SPRAY-TIGHT DOUBLE-LEAF STEEL DOOR 1800x1600 – R – F – 6 acc. to catalogue card no **KK24 - 05/34 – 941.**

At the weight isn't included additional equipment (lock, insulation)

This catalogue card corresponds with drawing N24 – 05/34 - 941