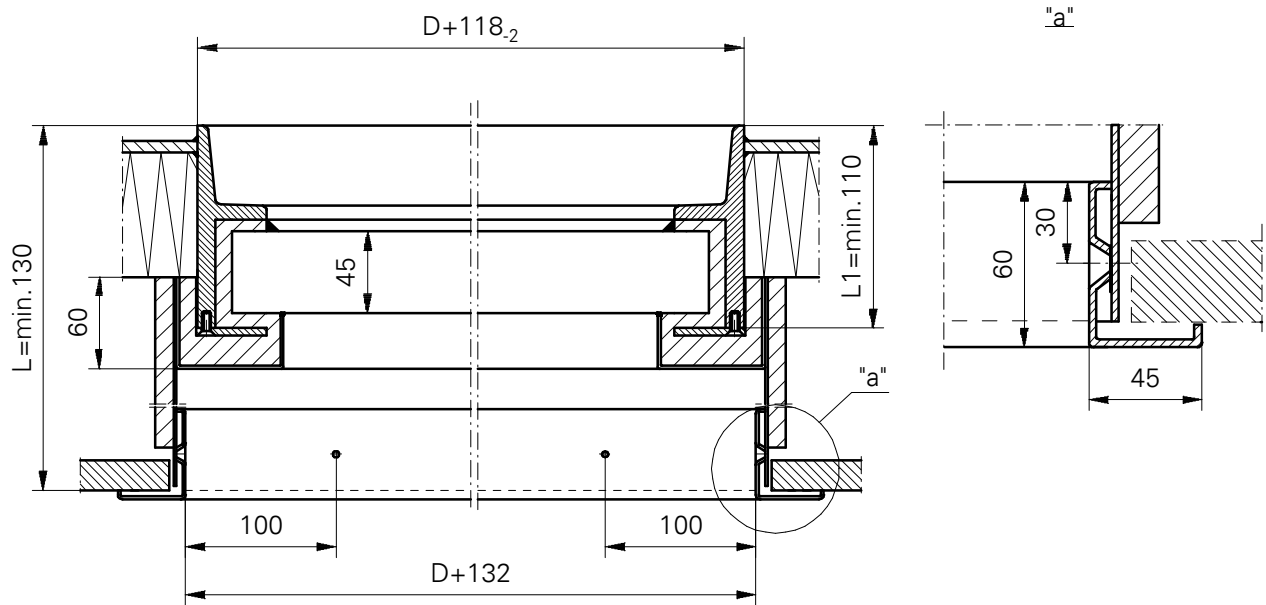
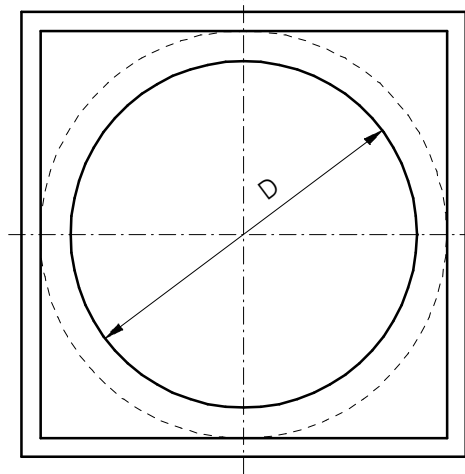
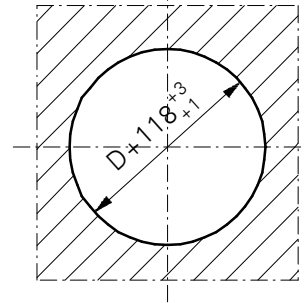


HOLE IN SHIPS
STEEL WALL



| D |
|-----|
| 200 |
| 250 |
| 300 |
| 350 |
| 400 |



LUBMOR Ltd.

ul. Wieleńska 1, 64-980 Trzcianka
tel. +48/67/216-22-44
fax +48/67/216-59-40
e-mail: lubmor@lubmor
www.lubmor.pl

SIDE-SCUTTLE CLASS A60

**KK 24-07
30-310**

SIDE-SCUTTLE CLASS A60

APPROPRATION

The side-scuttles class A60 are designed for using on the water ships .

EXECUTION

The side-scuttle is made acc. to Polish and international standards .

It is made of steel frame , glass list , set of the glasses and box . The frame is connected with glass list by means of the screws . Space between glass and frame and box is filled with fireproof insulation . Fireproof glass is connected with hardened one of standard thickness 10 mm . Total thickness of this set and depth of side-scuttle frame is depended on thickness of hardened glass .

This thickness should be stated during order if the customer wish himself other thickness of hardened glass .

The side-scuttle box is made of steel sheet thick. 2 mm . Precise dimension L is stated during installation by means of framing which is screwing with stainless steel self-tapping screws A3,9x22 acc. to DIN 7982 (12 pcs) .

Frame of side-scuttle is protected against corrosion with epoxy primer of thick. 40 μm . A surface covered with insulation is protected with painting set which consist three layers of epoxy paints of total thick. 100 μm .

Finishing of visible surfaces of side-scuttle box white stoove paint .

DELIVERY RANG

Delivery includes complete side-scuttle together with box and without self-tapping screws .

PACKING , TRANSPORT , STORAGE

A glass is protected with foil .

This foil is removed after installation of side-scuttle onboard .

The side-scuttles are delivered on the pallets without packing .

The goods should be transported with dry , clean and roofed transport protecting them against displacing and mechanical damages .

The side-scuttles should be stored in closed warehouses enabling the same conditions like in transport and should be protected against substances which have destructive action for the gaskets .

EXAMPLE OF MARKING

Side scuttle class A60 size clear opening $D = 400 \text{ mm}$, with depth of shuttering $L = 200 \text{ mm}$ acc. to KK 24-07/30-310.

SIDE-SCUTTLE A60 400 L = 200 acc. to catalogue card KK 24-07/30-310.

This catalogue card corresponds with drawing no N24-07/30-310.