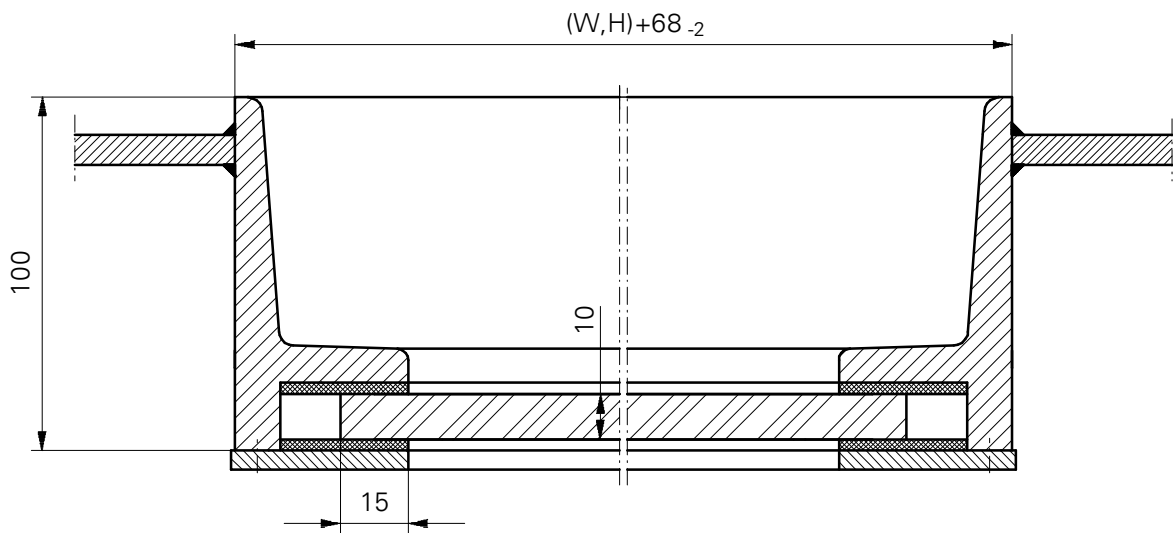
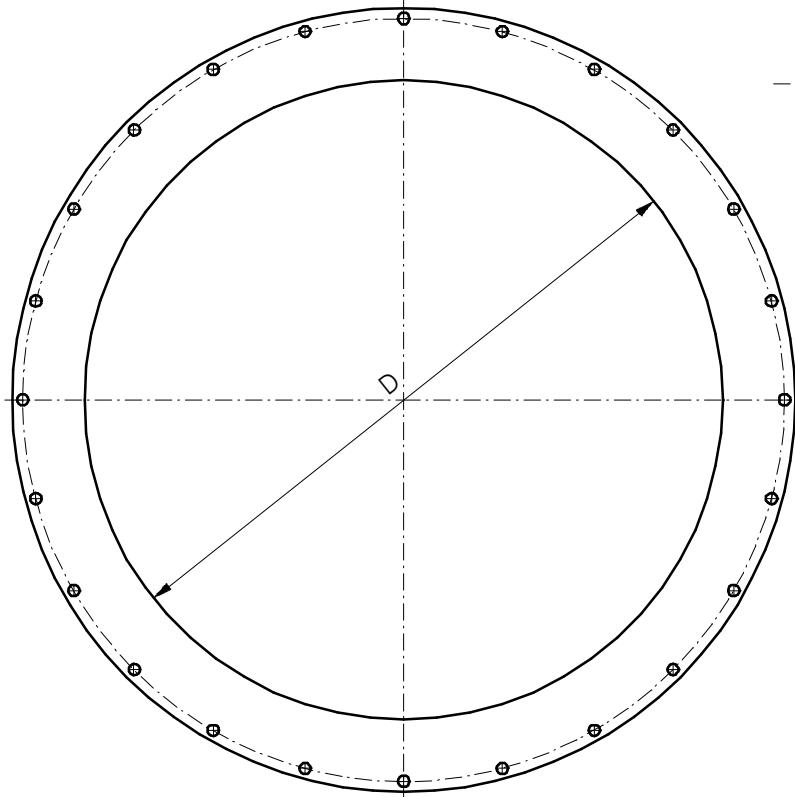
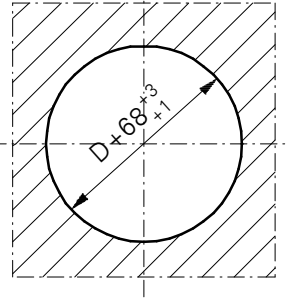


HOLE IN SHIP
STEEL WALL



D
200
250
300
350
400



LUBMOR Ltd.

ul. Wieleńska 1, 64-980 Trzcianka
tel. +48/67/216-22-44
fax +48/67/216-59-40
e-mail: lubmor@lubmor
www.lubmor.pl

SIDE-SCUTTLE CLASS A0

**KK 24-07
30-370**

SIDE-SCUTTLE CLASS A0

APPROPRIATION

The side-scuttles class A0 are designed for using on the ships.

EXECUTION

The side-scuttle is made acc.to Polish and international standards .

The side-scuttle is made of steel frame, glass list and set of the glasses .

Glass list is screwed to the frame. A space between glass pane and the frame is filled with fire-proof insulation. A fire-proof glass pane is 10 mm thick . If the customer wish himself another thick. glass pane, it should be stated at the order .

Frame of side scuttle is protected of epoxy primer thick. 40 μm . A surface covered with insulation is protected of painting set which consists a three epoxy layers of total thick. 100 μm .

DELIVERY RANG

Complete and assembled side-scuttle is delivery to the customer.

PACKING, TRANSPORT, STORAGE

The glass pane is protected with foil. It is removed after mounting of side-scuttle on the ship.

The side-scuttles are delivered on the pallets without packing. The goods should be transported of dry, clean and roofed trucks in order to avoid their dislocation and mechanical damages.

They should be stored in closed accommodations in order to ensure the same conditions like during transport and should also be protected against the agents which might to cause damages of the gaskets.

EXAMPLE OF MARKING

Side-scuttle class A0 clear opening $D = 400 \text{ mm}$.

SIDE-SCUTTLE CLASS A0 400 acc.to no KK 24-07/30-370.

This catalogue card corresponds with drawing no N24-07/30-370.